



INTERNATIONAL GEMOLOGICAL INSTITUTE

ELECTRONIC COPY

LABORATORY GROWN DIAMOND REPORT

LG564379244

LABORATORY GROWN DIAMOND REPORT

IGI LABORATORY GROWN DIAMOND IDENTIFICATION REPORT

February 23, 2023

IGI Report Number

LG564379244

Description

LABORATORY GROWN DIAMOND

Shape and Cutting Style

ROUND BRILLIANT

Measurements

5.07 - 5.11 X 3.03 MM

GRADING RESULTS

Carat Weight

0.50 CARAT

Color Grade

FANCY VIVID BLUE

Clarity Grade

VS 2

Cut Grade

VERY GOOD

ADDITIONAL GRADING INFORMATION

Polish

EXCELLENT

Symmetry

EXCELLENT

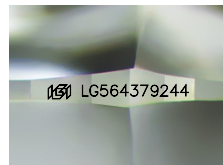
Fluorescence

NONE

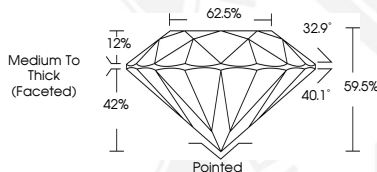
Inscription(s)

IGI LG564379244

Comments: As Grown - No indication of post-growth treatment. This Laboratory Grown Diamond was created by High Pressure High Temperature (HPHT) growth process.



Sample Image Used



IGI LABORATORY GROWN DIAMOND ID REPORT

February 23, 2023

IGI Report Number LG564379244

ROUND BRILLIANT

5.07 - 5.11 X 3.03 MM

Carat Weight 0.50 CARAT

Color Grade FANCY VIVID BLUE

Clarity Grade VS 2

Cut Grade VERY GOOD

Polish EXCELLENT

Symmetry EXCELLENT

Fluorescence NONE

Inscription(s) IGI LG564379244

Comments: As Grown - No indication of post-growth treatment. This Laboratory Grown Diamond was created by High Pressure High Temperature (HPHT) growth process.

IGI LABORATORY GROWN DIAMOND ID REPORT

February 23, 2023

IGI Report Number LG564379244

ROUND BRILLIANT

5.07 - 5.11 X 3.03 MM

Carat Weight 0.50 CARAT

Color Grade FANCY VIVID BLUE

Clarity Grade VS 2

Cut Grade VERY GOOD

Polish EXCELLENT

Symmetry EXCELLENT

Fluorescence NONE

Inscription(s) IGI LG564379244

Comments: As Grown - No indication of post-growth treatment. This Laboratory Grown Diamond was created by High Pressure High Temperature (HPHT) growth process.



THIS DOCUMENT WAS PRODUCED WITH THE FOLLOWING SECURITY MEASURES: SPECIAL DOCUMENT PAPER, INK SCREENS, WATERMARK, BACKGROUND DESIGN, HOLOGRAM AND OTHER SECURITY FEATURES NOT LISTED AND DO EXCEED DOCUMENT SECURITY INDUSTRY GUIDELINES.

For terms & conditions and to verify this report, please visit www.igi.org