



**ELECTRONIC COPY**

**LABORATORY GROWN DIAMOND REPORT**

January 13, 2023  
 IGI Report Number **LG564351373**  
 Description **LABORATORY GROWN  
DIAMOND**  
 Shape and Cutting Style **HEART BRILLIANT**  
 Measurements **6.35 X 7.63 X 4.61 MM**

**GRADING RESULTS**

Carat Weight **1.32 CARAT**  
 Color Grade **D**  
 Clarity Grade **VS 1**

**ADDITIONAL GRADING INFORMATION**

Polish **EXCELLENT**  
 Symmetry **EXCELLENT**  
 Fluorescence **NONE**

Inscription(s) **LABGROWN (LGI) LG564351373**

Comments: As Grown - No indication of post-growth treatment.

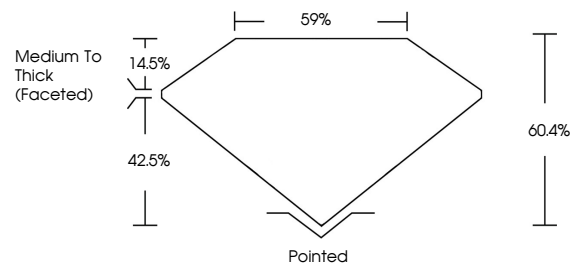
This Laboratory Grown Diamond was created by High Pressure High Temperature (HPHT) growth process. Type II

**LABORATORY GROWN DIAMOND REPORT**

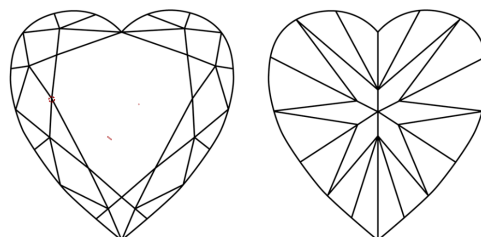
**LG564351373**

Report verification at [igi.org](http://igi.org)

**PROPORTIONS**



**CLARITY CHARACTERISTICS**



**KEY TO SYMBOLS**

Red symbols indicate internal characteristics.  
 Green symbols indicate external characteristics.

**LABORATORY GROWN  
DIAMOND REPORT**

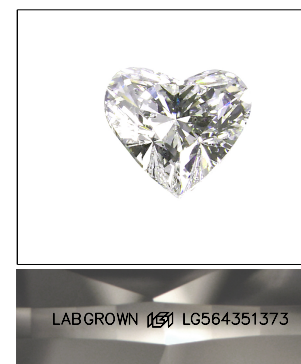
**GRADING SCALES**

**CLARITY**

IF	VVS <sup>1-2</sup>	VS <sup>1-2</sup>	SI <sup>1-2</sup>	I <sup>1-3</sup>
Internally Flawless	Very Very Slightly Included	Very Slightly Included	Slightly Included	Included

**COLOR**

D	E	F	G	H	I	J	Faint	Very Light	Light
---	---	---	---	---	---	---	-------	------------	-------

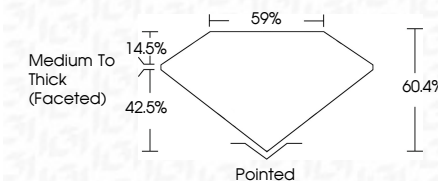


**LASERSCRIBE<sup>SM</sup>**

Sample Image Used

**LABORATORY GROWN DIAMOND REPORT**

January 13, 2023  
 IGI Report Number **LG564351373**  
 Description **LABORATORY GROWN  
DIAMOND**  
 Shape and Cutting Style **HEART BRILLIANT**  
 Measurements **6.35 X 7.63 X 4.61 MM**  
**GRADING RESULTS**  
 Carat Weight **1.32 CARAT**  
 Color Grade **D**  
 Clarity Grade **VS 1**



**ADDITIONAL GRADING INFORMATION**

Polish **EXCELLENT**  
 Symmetry **EXCELLENT**  
 Fluorescence **NONE**  
 Inscription(s) **LABGROWN (LGI) LG564351373**

Comments: As Grown - No indication of post-growth treatment.  
 This Laboratory Grown Diamond was created by High Pressure High Temperature (HPHT) growth process. Type II



January 13, 2023  
 IGI Report No LG564351373  
**HEART BRILLIANT**  
 6.35 X 7.63 X 4.61 MM  
 Carat Weight **1.32 CARAT**  
 Color Grade **D**  
 Clarity Grade **VS 1**  
 Depth **60.4%**  
 Table **59%**  
 Girdle **Medium To Thick (Faceted)**  
 Culet **Pointed**  
 Polish **EXCELLENT**  
 Symmetry **EXCELLENT**  
 Fluorescence **NONE**  
 Inscription(s) **LABGROWN (LGI) LG564351373**  
 Comments: As Grown - No indication of post-growth treatment.  
 This Laboratory Grown Diamond was created by High Pressure High Temperature (HPHT) growth process. Type II