



**ELECTRONIC COPY**

**LABORATORY GROWN DIAMOND REPORT**

LG563239707

Report verification at igi.org

**LABORATORY GROWN  
DIAMOND REPORT**

**LABORATORY GROWN DIAMOND REPORT**

**LABORATORY GROWN DIAMOND REPORT**

January 11, 2023  
 IGI Report Number **LG563239707**  
 Description **LABORATORY GROWN  
DIAMOND**  
 Shape and Cutting Style **MODIFIED PENTAGON STEP CUT**  
 Measurements **7.47 X 6.50 X 3.85 MM**

**GRADING RESULTS**

Carat Weight **1.00 CARAT**  
 Color Grade **D**  
 Clarity Grade **SI 1**

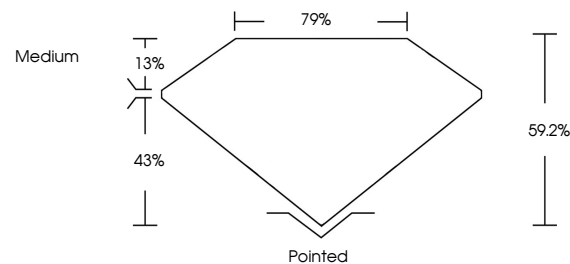
**ADDITIONAL GRADING INFORMATION**

Polish **EXCELLENT**  
 Symmetry **EXCELLENT**  
 Fluorescence **NONE**

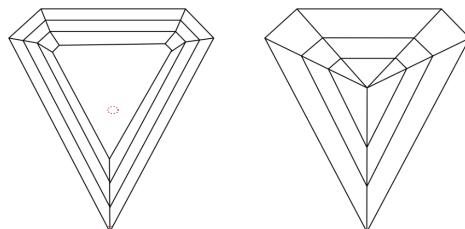
Inscription(s) **LABGROWN (LGI) LG563239707**

Comments: This Laboratory Grown Diamond was created by Chemical Vapor Deposition (CVD) growth process and may include post-growth treatment. Type IIa

**PROPORTIONS**



**CLARITY CHARACTERISTICS**



**KEY TO SYMBOLS**

Red symbols indicate internal characteristics.  
 Green symbols indicate external characteristics.

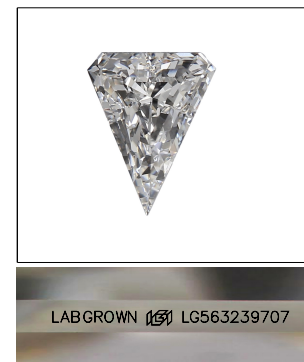
**GRADING SCALES**

**CLARITY**

| IF                  | VVS <sup>1-2</sup>          | VS <sup>1-2</sup>      | SI <sup>1-2</sup> | I <sup>1-3</sup> |
|---------------------|-----------------------------|------------------------|-------------------|------------------|
| Internally Flawless | Very Very Slightly Included | Very Slightly Included | Slightly Included | Included         |

**COLOR**

| D | E | F | G | H | I | J | Faint | Very Light | Light |
|---|---|---|---|---|---|---|-------|------------|-------|
|---|---|---|---|---|---|---|-------|------------|-------|



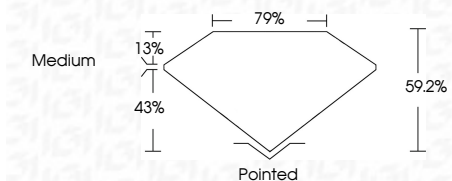
**LASERSCRIBE<sup>SM</sup>**

Sample Image Used

January 11, 2023  
 IGI Report Number **LG563239707**  
 Description **LABORATORY GROWN  
DIAMOND**  
 Shape and Cutting Style **MODIFIED PENTAGON STEP CUT**  
 Measurements **7.47 X 6.50 X 3.85 MM**

**GRADING RESULTS**

Carat Weight **1.00 CARAT**  
 Color Grade **D**  
 Clarity Grade **SI 1**



**ADDITIONAL GRADING INFORMATION**

Polish **EXCELLENT**  
 Symmetry **EXCELLENT**  
 Fluorescence **NONE**  
 Inscription(s) **LABGROWN (LGI) LG563239707**

Comments: This Laboratory Grown Diamond was created by Chemical Vapor Deposition (CVD) growth process and may include post-growth treatment. Type IIa



**IGI**



|                            |              |             |               |         |        |         |           |          |                            |
|----------------------------|--------------|-------------|---------------|---------|--------|---------|-----------|----------|----------------------------|
| January 11, 2023           | 1.00 CARAT   | D           | SI 1          | 79%     | Medium | Pointed | EXCELLENT | NONE     | LABGROWN (LGI) LG563239707 |
| IGI Report No LG563239707  | Carat Weight | Color Grade | Clarity Grade | Depth % | Table  | Culet   | Polish    | Symmetry | Inscription(s)             |
| MODIFIED PENTAGON STEP CUT |              |             |               |         |        |         |           |          |                            |
|                            |              |             |               |         |        |         |           |          |                            |

Comments: This Laboratory Grown Diamond was created by Chemical Vapor Deposition (CVD) growth process and may include post-growth treatment. Type IIa