



**ELECTRONIC COPY**

**LABORATORY GROWN DIAMOND REPORT**

LG561276745

Report verification at [igi.org](http://igi.org)

**LABORATORY GROWN  
DIAMOND REPORT**

**LABORATORY GROWN DIAMOND REPORT**

**LABORATORY GROWN DIAMOND REPORT**

February 26, 2024  
IGI Report Number **LG561276745**  
Description **LABORATORY GROWN  
DIAMOND**  
Shape and Cutting Style **PRINCESS CUT**  
Measurements **9.39 X 9.29 X 6.74 MM**

**GRADING RESULTS**

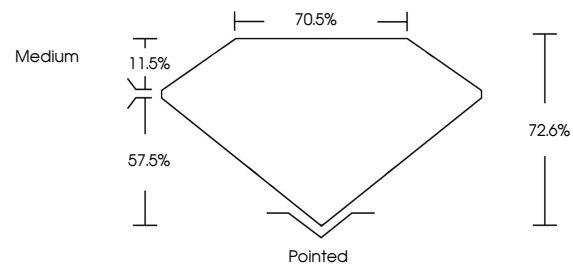
Carat Weight **5.10 CARATS**  
Color Grade **FANCY VIVID PINK**  
Clarity Grade **SI 1**

**ADDITIONAL GRADING INFORMATION**

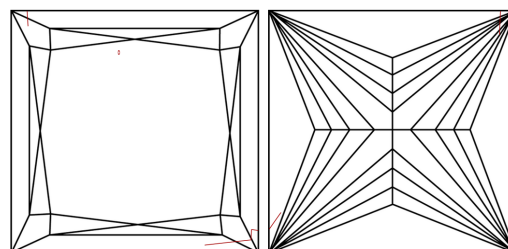
Polish **EXCELLENT**  
Symmetry **EXCELLENT**  
Fluorescence **SLIGHT**  
Inscription(s) **LABGROWN (IGI) LG561276745**

Comments: This Laboratory Grown Diamond was created by Chemical Vapor Deposition (CVD) growth process.  
Indications of post-growth treatment.

**PROPORTIONS**



**CLARITY CHARACTERISTICS**



**KEY TO SYMBOLS**

Red symbols indicate internal characteristics.  
Green symbols indicate external characteristics.

**GRADING SCALES**

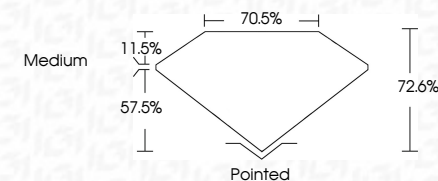
**CLARITY**

IF	VVS <sup>1-2</sup>	VS <sup>1-2</sup>	SI <sup>1-2</sup>	I <sup>1-3</sup>
Internally Flawless	Very Very Slightly Included	Very Slightly Included	Slightly Included	Included

**COLOR**

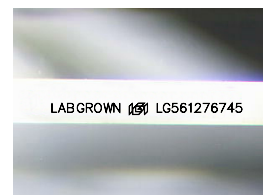
D	E	F	G	H	I	J	Faint	Very Light	Light
Light Tint	Fancy Light	Fancy	Fancy Intense	Fancy Vivid					

February 26, 2024  
IGI Report Number **LG561276745**  
Description **LABORATORY GROWN  
DIAMOND**  
Shape and Cutting Style **PRINCESS CUT**  
Measurements **9.39 X 9.29 X 6.74 MM**  
**GRADING RESULTS**  
Carat Weight **5.10 CARATS**  
Color Grade **FANCY VIVID PINK**  
Clarity Grade **SI 1**



**ADDITIONAL GRADING INFORMATION**

Polish **EXCELLENT**  
Symmetry **EXCELLENT**  
Fluorescence **SLIGHT**  
Inscription(s) **LABGROWN (IGI) LG561276745**  
Comments: This Laboratory Grown Diamond was created by Chemical Vapor Deposition (CVD) growth process.  
Indications of post-growth treatment.



Sample Image Used



**IGI**

February 26, 2024  
IGI Report No **LG561276745**  
**PRINCESS CUT**  
**5.10 CARATS**  
Carat Weight **5.10 CARATS**  
Color Grade **FANCY VIVID PINK**  
Clarity Grade **SI 1**  
Depth **72.6%**  
Table **70.5%**  
Girdle **Medium**  
Culet **Pointed**  
Polish **EXCELLENT**  
Symmetry **EXCELLENT**  
Fluorescence **SLIGHT**  
Inscription(s) **LABGROWN (IGI) LG561276745**  
Comments: This Laboratory Grown Diamond was created by Chemical Vapor Deposition (CVD) growth process.  
Indications of post-growth treatment.