



**ELECTRONIC COPY**

LABORATORY GROWN DIAMOND REPORT

LG561274947

Report verification at [igi.org](http://igi.org)

LABORATORY GROWN  
DIAMOND REPORT

LABORATORY GROWN DIAMOND REPORT

LABORATORY GROWN DIAMOND REPORT

December 27, 2022  
IGI Report Number **LG561274947**  
Description **LABORATORY GROWN  
DIAMOND**  
Shape and Cutting Style **ROUND BRILLIANT**  
Measurements **6.68 - 6.71 X 4.09 MM**

**GRADING RESULTS**

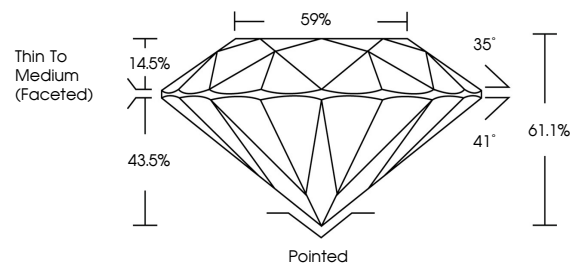
Carat Weight **1.13 CARAT**  
Color Grade **F**  
Clarity Grade **VS 1**  
Cut Grade **IDEAL**

**ADDITIONAL GRADING INFORMATION**

Polish **EXCELLENT**  
Symmetry **EXCELLENT**  
Fluorescence **NONE**  
Inscription(s) **LABGROWN (L) LG561274947**

Comments: This Laboratory Grown Diamond was created by Chemical Vapor Deposition (CVD) growth process and may include post-growth treatment. Type IIa

**PROPORTIONS**



**CLARITY CHARACTERISTICS**



**KEY TO SYMBOLS**

Red symbols indicate internal characteristics.  
Green symbols indicate external characteristics.

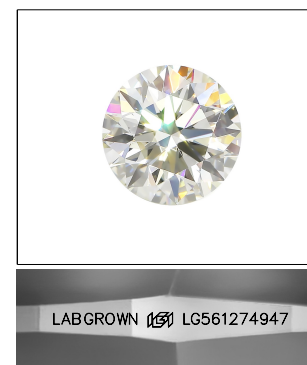
**GRADING SCALES**

**CLARITY**

IF	VVS <sup>1-2</sup>	VS <sup>1-2</sup>	SI <sup>1-2</sup>	I <sup>1-3</sup>
Internally Flawless	Very Very Slightly Included	Very Slightly Included	Slightly Included	Included

**COLOR**

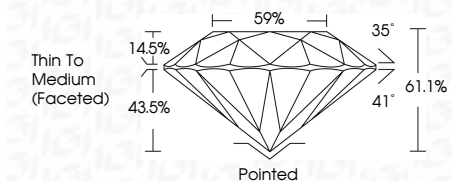
D	E	F	G	H	I	J	Faint	Very Light	Light
---	---	---	---	---	---	---	-------	------------	-------



LASERSCRIBE<sup>SM</sup>

Sample Image Used

December 27, 2022  
IGI Report Number **LG561274947**  
Description **LABORATORY GROWN  
DIAMOND**  
Shape and Cutting Style **ROUND BRILLIANT**  
Measurements **6.68 - 6.71 X 4.09 MM**  
**GRADING RESULTS**  
Carat Weight **1.13 CARAT**  
Color Grade **F**  
Clarity Grade **VS 1**  
Cut Grade **IDEAL**



**ADDITIONAL GRADING INFORMATION**

Polish **EXCELLENT**  
Symmetry **EXCELLENT**  
Fluorescence **NONE**  
Inscription(s) **LABGROWN (L) LG561274947**

Comments: This Laboratory Grown Diamond was created by Chemical Vapor Deposition (CVD) growth process and may include post-growth treatment. Type IIa



**IGI**

December 27, 2022	IGI Report No LG561274947	ROUND BRILLIANT	6.68 - 6.71 X 4.09 MM	1.13 CARAT	F	VS 1	IDEAL	61.1%	59%	Thin To Medium (Faceted)	Pointed	EXCELLENT	EXCELLENT	NONE	LABGROWN (L) LG561274947
Culet	Polish	Symmetry	Fluorescence	Inscriptions(s)	Cut Grade	Clarity Grade	Color Grade	Depth	Table	Grade	Culet	Polish	Symmetry	Fluorescence	Inscriptions(s)

Comments: This Laboratory Grown Diamond was created by Chemical Vapor Deposition (CVD) growth process and may include post-growth treatment. Type IIa