



## LABORATORY GROWN DIAMOND REPORT

## GRADING RESULTS

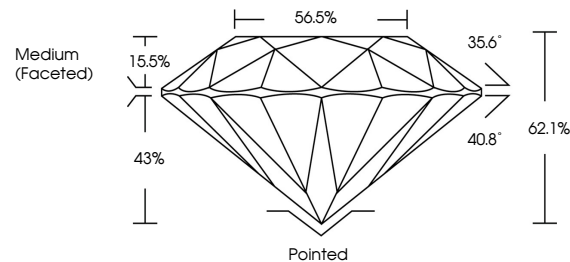
### ADDITIONAL GRADING INFORMATION

Inscription(s) **LABGROWN ~~(151)~~ LG561259577**  
 Comments: This Laboratory Grown Diamond was created by Chemical Vapor Deposition (CVD) growth process and may include post-growth treatment.  
 Type IIa

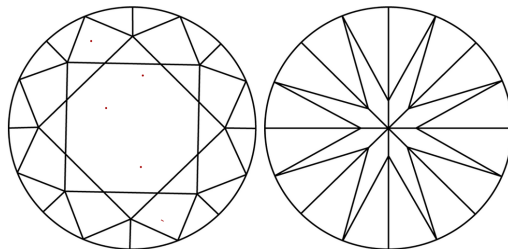
LG561259577

Report verification at [igi.org](http://igi.org)

## PROPORTIONS



## CLARITY CHARACTERISTICS



### KEY TO SYMBOLS

Red symbols indicate internal characteristics.  
Green symbols indicate external characteristics.

## LABORATORY GROWN DIAMOND REPORT

GRADING RESULTS	
Carat Weight	3.09 CARATS
Color Grade	H
Clarity Grade	VVS 2
Cut Grade	IDEAL

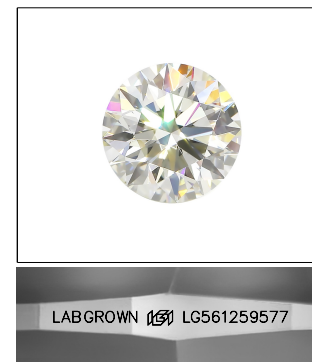
## GRADING SCALES

## CLARITY

IF	VVS <sup>1-2</sup>	VS <sup>1-2</sup>	SI <sup>1-2</sup>	I <sup>1-3</sup>
Internally Flawless	Very Very Slightly Included	Very Slightly Included	Slightly Included	Included

**COLOR**

D E F G H I J Faint Very Light Light

LASERSCRIBE<sup>SM</sup>

Sample Image Used



© IGI 2020, International Gemological Institute

FD - 10 20



December 24, 2022  
IGI Report No LG561259577  
ROUND BRILLIANT

3.09 CARATS	H
VVS 2	
IDEAL	
62.1%	
56.5%	
Medium (Faceted)	

Pointed  
EXCELLENT  
EXCELLENT  
NONE  
LABGROWN 100

Culet  
Polish  
Symmetry  
Fluorescence  
Inscription(s)

**Comments:**  
This Laboratory Grown Diamond was created by Chemical Vapor Deposition (CVD) growth process and may include post-growth treatment.