



**ELECTRONIC COPY**

## LABORATORY GROWN DIAMOND REPORT

December 16, 2022	
IGI Report Number	LG560228011
Description	LABORATORY GROWN DIAMOND
Shape and Cutting Style	CUT CORNERED RECTANGULAR MODIFIED BRILLIANT
Measurements	8.38 X 5.79 X 3.94 MM

## GRADING RESULTS

Carat Weight	1.65 CARAT
Color Grade	H
Clarity Grade	VS 1

### ADDITIONAL GRADING INFORMATION

Polish	EXCELLENT
Symmetry	EXCELLENT
Fluorescence	NONE

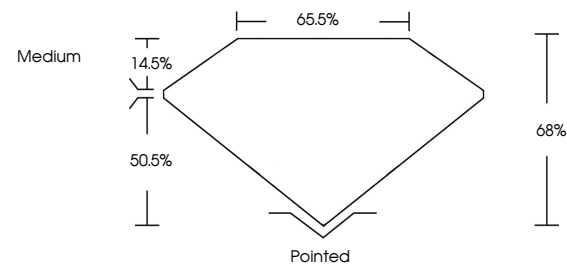
Inscription(s) **LABGROWN  LG560228011**  
 Comments: This Laboratory Grown Diamond was created by Chemical Vapor Deposition (CVD) growth process and may include post-growth treatment.  
 Type IIa

## LABORATORY GROWN DIAMOND REPORT

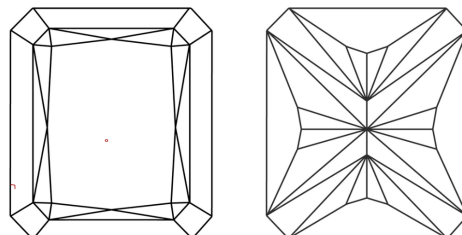
LG560228011

Report verification at [igi.org](http://igi.org)

## PROPORTIONS



## CLARITY CHARACTERISTICS



## KEY TO SYMBOLS

Red symbols indicate internal characteristics.  
Green symbols indicate external characteristics.

LABORATORY GROWN  
DIAMOND REPORT

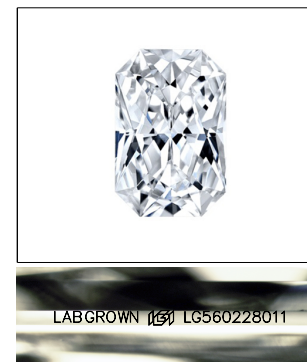
## GRADING SCALES

## CLARITY

IF	VVS <sup>1-2</sup>	VS <sup>1-2</sup>	SI <sup>1-2</sup>	I <sup>1-3</sup>
Internally Flawless	Very Very Slightly Included	Very Slightly Included	Slightly Included	Included

**COLOR**

D E F G H I J Faint Very Light Light

LASERSCRIBE<sup>SM</sup>

Sample Image Used



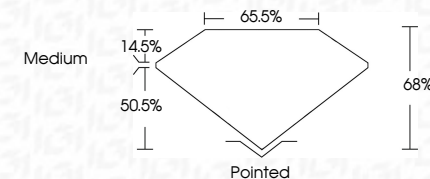
© IGI 2020, International Gemological Institute

FD - 10 20

**www.igi.org**

## LABORATORY GROWN DIAMOND REPORT

December 16, 2022	
IGI Report Number	LG560228011
Description	LABORATORY GROWN DIAMOND
Shape and Cutting Style	CUT CORNERED RECTANGULAR MODIFIED BRILLIANT
Measurements	8.38 X 5.79 X 3.94 MM
<b>GRADING RESULTS</b>	
Carat Weight	1.65 CARAT
Color Grade	H
Clarity Grade	VS 1



### ADDITIONAL GRADING INFORMATION

Polish	EXCELLENT
Symmetry	EXCELLENT
Fluorescence	NONE
Inscription(s)	LABGROWN (157) LG560228011

Comments: This Laboratory Grown Diamond was created by Chemical Vapor Deposition (CVD) growth process and may include post-growth treatment.  
Type IIa



December 16, 2022	CUT CORNERED RECT. MODIFIED BRILLIANT	
IGI REPORT NO. LG560228011		
3.38 X 5.79 X 3.94 MM		
Carat Weight	1.65 CARAT	
Color Grade	Vs1	
Depth	68%	
Table	65.5%	
Girdle	Medium	
Culet	Pointed	
Polish	EXCELLENT	
Symmetry	EXCELLENT	
Fluorescence	NONE	
Inscription(s)	LAGERDROWN (8)	
Comments:	This Laboratory Chemical Vapor Deposition treated Diamond may include surface treatments and may include post-growth treatment.	
	Laser Crown (8) LG560228011	