



**ELECTRONIC COPY**

## LABORATORY GROWN DIAMOND REPORT

December 12, 2022	
IGI Report Number	LG560202826
Description	LABORATORY GROWN DIAMOND
Shape and Cutting Style	CUT CORNERED RECTANGULAR MODIFIED BRILLIANT
Measurements	7.82 X 5.37 X 3.49 MM

## GRADING RESULTS

Carat Weight	1.29 CARAT
Color Grade	F
Clarity Grade	VS 1

### ADDITIONAL GRADING INFORMATION

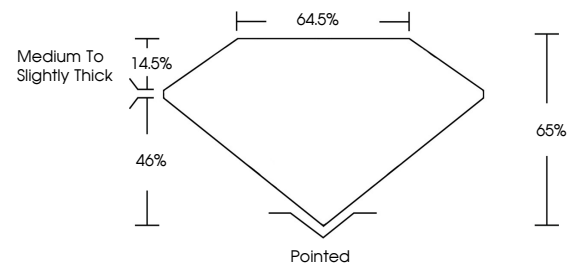
Polish	EXCELLENT
Symmetry	EXCELLENT
Fluorescence	NONE

Inscription(s) **LABGROWN 131 LG560202826**  
 Comments: This Laboratory Grown Diamond was created by Chemical Vapor Deposition (CVD) growth process and may include post-growth treatment.  
 Type IIa

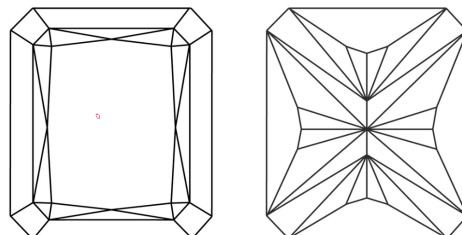
## LABORATORY GROWN DIAMOND REPORT

LG560202826  
Report verification at lgi.org

## PROPORTIONS



## CLARITY CHARACTERISTICS



### KEY TO SYMBOLS

Red symbols indicate internal characteristics.  
Green symbols indicate external characteristics.

LABORATORY GROWN  
DIAMOND REPORT

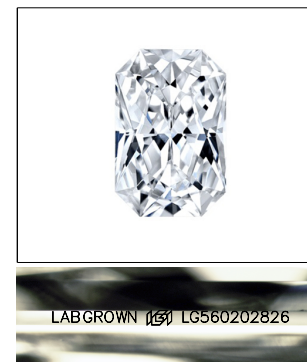
## GRADING SCALES

## CLARITY

IF	VVS <sup>1-2</sup>	VS <sup>1-2</sup>	SI <sup>1-2</sup>	I <sup>1-3</sup>
Internally Flawless	Very Very Slightly Included	Very Slightly Included	Slightly Included	Included

**COLOR**

D E F G H I J Faint Very Light Light

LASERSCRIBE<sup>SM</sup>

Sample Image Used



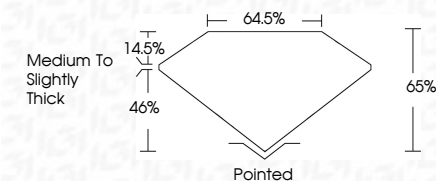
© IGI 2020, International Gemological Institute

FD - 10 20

**www.igi.org**

## LABORATORY GROWN DIAMOND REPORT

December 12, 2022	
IGI Report Number	LG560202826
Description	LABORATORY GROWN DIAMOND
Shape and Cutting Style	CUT CORNERED RECTANGULAR MODIFIED BRILLIANT
Measurements	7.82 X 5.37 X 3.49 MM
<b>GRADING RESULTS</b>	
Carat Weight	1.29 CARAT
Color Grade	F
Clarity Grade	VS 1



### ADDITIONAL GRADING INFORMATION

Polish	EXCELLENT
Symmetry	EXCELLENT
Fluorescence	NONE
Inscription(s)	LABGROWN (157) LG560202826

Comments: This Laboratory Grown Diamond was created by Chemical Vapor Deposition (CVD) growth process and may include post-growth treatment.  
Type IIa



December 12, 2022	IGI CORP. NO. LGS4020265		CUT CORNERED RECT. MODIFIED BRILLIANT	
	7.85 X 6.37 X 3.49 MM		1.25 CARAT	
	Carat Weight		F	
	Color Grade	Clarity Grade	VS 1	
	Depth	Table	65%	
	Girdle		64.5%	
			Medium To Slightly Thick	
	Quiet		Pointed	
	Polish		EXCELLENT	
	Symmetry		EXCELLENT	
	Fluorescence		NONE	
	Inscription(s)		LARGEMAN (G)	
			LS450202652	
Comments:	This Laboratory Grown Diamond was created by Chemical Vapor Deposition (CVD) growth process and may include growth treatment. type Ia			