



ELECTRONIC COPY

LABORATORY GROWN DIAMOND REPORT

LG559297230

Report verification at igi.org

LABORATORY GROWN
DIAMOND REPORT

LABORATORY GROWN DIAMOND REPORT

LABORATORY GROWN DIAMOND REPORT

December 10, 2022
IGI Report Number **LG559297230**
Description **LABORATORY GROWN
DIAMOND**
Shape and Cutting Style **ROUND BRILLIANT**
Measurements **6.45 - 6.48 X 4.09 MM**

GRADING RESULTS

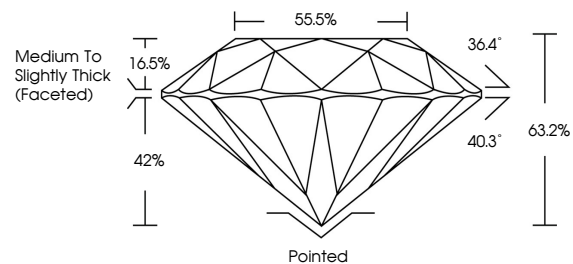
Carat Weight **1.08 CARAT**
Color Grade **D**
Clarity Grade **VS 2**
Cut Grade **EXCELLENT**

ADDITIONAL GRADING INFORMATION

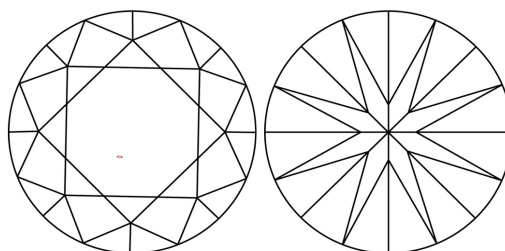
Polish **EXCELLENT**
Symmetry **EXCELLENT**
Fluorescence **NONE**
Inscription(s) **LABGROWN (L) LG559297230**

Comments: As Grown - No indication of post-growth treatment.
This Laboratory Grown Diamond was created by High Pressure High Temperature (HPHT) growth process. Type II

PROPORTIONS



CLARITY CHARACTERISTICS



KEY TO SYMBOLS

Red symbols indicate internal characteristics.
Green symbols indicate external characteristics.

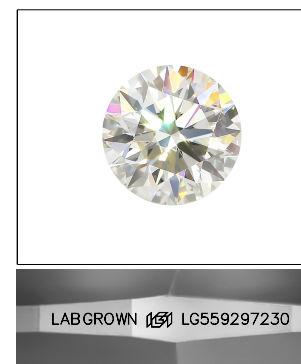
GRADING SCALES

CLARITY

IF	VVS ¹⁻²	VS ¹⁻²	SI ¹⁻²	I ¹⁻³
Internally Flawless	Very Very Slightly Included	Very Slightly Included	Slightly Included	Included

COLOR

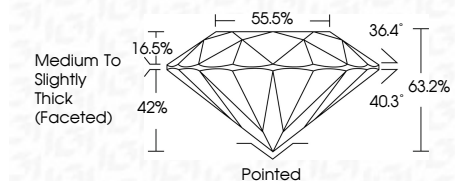
D	E	F	G	H	I	J	Faint	Very Light	Light
---	---	---	---	---	---	---	-------	------------	-------



LASERSCRIBESM

Sample Image Used

December 10, 2022
IGI Report Number **LG559297230**
Description **LABORATORY GROWN
DIAMOND**
Shape and Cutting Style **ROUND BRILLIANT**
Measurements **6.45 - 6.48 X 4.09 MM**
GRADING RESULTS
Carat Weight **1.08 CARAT**
Color Grade **D**
Clarity Grade **VS 2**
Cut Grade **EXCELLENT**



ADDITIONAL GRADING INFORMATION

Polish **EXCELLENT**
Symmetry **EXCELLENT**
Fluorescence **NONE**
Inscription(s) **LABGROWN (L) LG559297230**
Comments: As Grown - No indication of post-growth treatment.
This Laboratory Grown Diamond was created by High Pressure High Temperature (HPHT) growth process. Type II



IGI



December 10, 2022
IGI Report No LG559297230
ROUND BRILLIANT
6.45 - 6.48 X 4.09 MM
1.08 CARAT
Color Grade **D**
Clarity Grade **VS 2**
Cut Grade **EXCELLENT**
Depth **63.2%**
Table **55.5%**
Girdle **Medium To Slightly Thick (Faceted)**
Culet **Pointed**
Polish **EXCELLENT**
Symmetry **EXCELLENT**
Fluorescence **NONE**
Inscriptions(s) **LABGROWN (L) LG559297230**
Comments: **As Grown - No indication of post-growth treatment.**
This Laboratory Grown Diamond was created by High Pressure High Temperature (HPHT) growth process. Type II