



ELECTRONIC COPY

LABORATORY GROWN DIAMOND REPORT

December 14, 2022	
IGI Report Number	LG559201851
Description	LABORATORY GROWN DIAMOND
Shape and Cutting Style	SQUARE CUSHION BRILLIANT
Measurements	10.85 X 10.67 X 6.97 MM

GRADING RESULTS

Carat Weight	7.05 CARATS
Color Grade	H
Clarity Grade	VS 1

ADDITIONAL GRADING INFORMATION

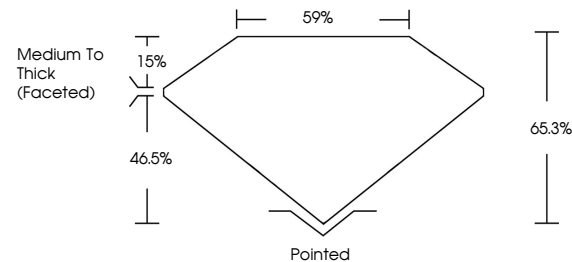
Polish	EXCELLENT
Symmetry	EXCELLENT
Fluorescence	NONE

Inscription(s) **LABGROWN  LG559201851**
 Comments: This Laboratory Grown Diamond was created by Chemical Vapor Deposition (CVD) growth process and may include post-growth treatment.
 Type IIa

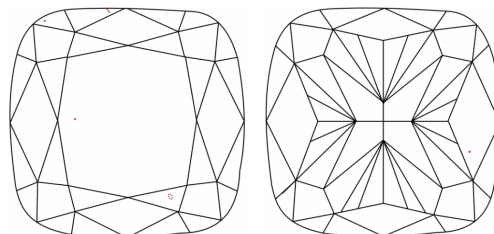
LABORATORY GROWN DIAMOND REPORT

LG559201851
Report verification at lgi.org

PROPORTIONS



CLARITY CHARACTERISTICS



KEY TO SYMBOLS

Red symbols indicate internal characteristics.
Green symbols indicate external characteristics.

LABORATORY GROWN
DIAMOND REPORT

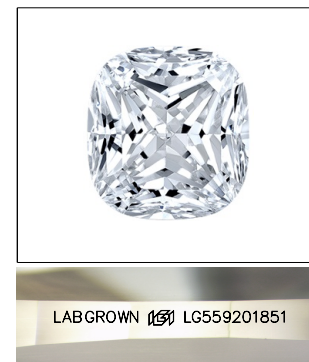
GRADING SCALES

CLARITY

IF	VVS ¹⁻²	VS ¹⁻²	SI ¹⁻²	I ¹⁻³
Internally Flawless	Very Very Slightly Included	Very Slightly Included	Slightly Included	Included

COLOR

D E F G H I J Faint Very Light Light

LASERSCRIBESM

Sample Image Used

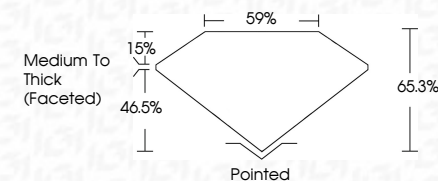


© IGI 2020, International Gemological Institute

FD - 10 20

LABORATORY GROWN DIAMOND REPORT

December 14, 2022	
IGI Report Number	LG559201851
Description	LABORATORY GROWN DIAMOND
Shape and Cutting Style	SQUARE CUSHION BRILLIANT
Measurements	10.85 X 10.67 X 6.97 MM
GRADING RESULTS	
Carat Weight	7.05 CARATS
Color Grade	H
Clarity Grade	VS 1



ADDITIONAL GRADING INFORMATION

Polish	EXCELLENT
Symmetry	EXCELLENT
Fluorescence	NONE
Inscription(s)	LABGROWN (15) LG559201851

Comments: This Laboratory Grown Diamond was created by Chemical Vapor Deposition (CVD) growth process and may include post-growth treatment.
Type IIa



December 14, 2022	7.05 CARATS	V/S I	65.5%	95%	Painted	NONE	LASCAWIN (gfr) LA5922N1851
Gf Report No LGS69201851					EXCELLENT	EXCELLENT	
SQUARE CUSHION BRILLIANT					Medium to Thick Faceted		
10.85 X 10.67 X 6.97 MM							
Carat Weight							
Color Grade							
Clarity Grade							
Depth							
Table							
Girdle							
Fluorescence							
Inscription(s)							
Culet							
Polish							
Symmetry							
Comments:							
The Laboratory Grown Diamond was created by Chemical Vapor Deposition (CVD) growth process and may include treatment.							
Type IIIa							

www.igi.org