



**ELECTRONIC COPY**

## LABORATORY GROWN DIAMOND REPORT

November 30, 2022	
IGI Report Number	LG557250217
Description	LABORATORY GROWN DIAMOND
Shape and Cutting Style	CUT CORNERED RECTANGULAR MODIFIED BRILLIANT
Measurements	8.54 X 5.81 X 3.95 MM

## GRADING RESULTS

Carat Weight	1.65 CARAT
Color Grade	F
Clarity Grade	VVS 2

### ADDITIONAL GRADING INFORMATION

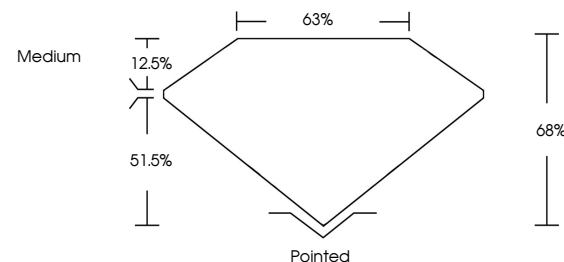
Polish	EXCELLENT
Symmetry	EXCELLENT
Fluorescence	NONE

Inscription(s) **LABGROWN 1(3) LG557250217**  
 Comments: This Laboratory Grown Diamond was created by Chemical Vapor Deposition (CVD) growth process and may include post-growth treatment. Type IIa

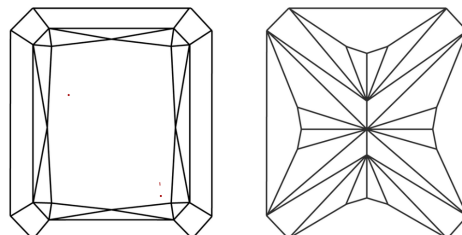
## LABORATORY GROWN DIAMOND REPORT

LG557250217  
Report verification at [lgi.org](https://lgi.org)

## PROPORTIONS



## CLARITY CHARACTERISTICS



## KEY TO SYMBOLS

Red symbols indicate internal characteristics.  
Green symbols indicate external characteristics.

LABORATORY GROWN  
DIAMOND REPORT

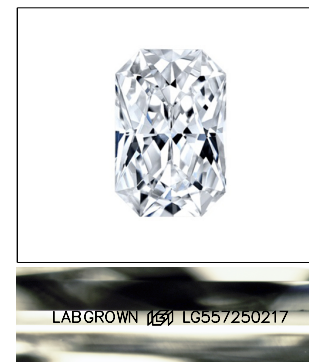
## GRADING SCALES

## CLARITY

IF	VVS <sup>1-2</sup>	VS <sup>1-2</sup>	SI <sup>1-2</sup>	I <sup>1-3</sup>
Internally Flawless	Very Very Slightly Included	Very Slightly Included	Slightly Included	Included

**COLOR**

D E F G H I J Faint Very Light Light

LASERSCRIBE<sup>SM</sup>

Sample Image Used



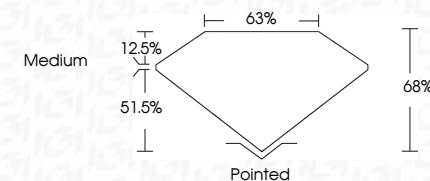
© IGI 2020, International Gemological Institute

FD - 10 20

**www.igi.org**

## LABORATORY GROWN DIAMOND REPORT

November 30, 2022	
IGI Report Number	LG557250217
Description	LABORATORY GROWN DIAMOND
Shape and Cutting Style	CUT CORNERED RECTANGULAR MODIFIED BRILLIANT
Measurements	8.54 X 5.81 X 3.95 MM
<b>GRADING RESULTS</b>	
Carat Weight	1.65 CARAT
Color Grade	F
Clarity Grade	VVS 2



### ADDITIONAL GRADING INFORMATION

Polish	EXCELLENT
Symmetry	EXCELLENT
Fluorescence	NONE
Inscription(s)	LABGROWN (157) LG557250217

Comments: This Laboratory Grown Diamond was created by Chemical Vapor Deposition (CVD) growth process and may include post-growth treatment.  
Type IIa



November 30, 2022	IGI REPORT NO. GS67592017	1.65 CARAT
CGI CORNERED RECT. MODIFIED BRILLIANT		F 2
5.61 X 5.61 X 3.95 MM		VVS 2
Carat Weight	Color Grade	68%
	Clarity Grade	65%
	Depth	Medium
	Table	
	Girdle	
	Culet	Pointed
	Polish	EXCELLENT
	Symmetry	EXCELLENT
	Fluorescence	NONE
	Inscription(s)	LASEBOWN 1881 LS657592017
<p>Comments:</p> <p>This Laboratory Chemical Vapor Deposition (CVD) grown process and may include growth treatment.</p> <p>type Ia</p>		