



**ELECTRONIC COPY**

## LABORATORY GROWN DIAMOND REPORT

December 2, 2022	
IGI Report Number	LG557249882
Description	LABORATORY GROWN DIAMOND
Shape and Cutting Style	ROUND BRILLIANT
Measurements	9.89 - 9.97 X 6.09 MM

## GRADING RESULTS

Carat Weight	3.70 CARATS
Color Grade	G
Clarity Grade	VS 1
Cut Grade	IDEAL

### ADDITIONAL GRADING INFORMATION

Polish	EXCELLENT
Symmetry	EXCELLENT
Fluorescence	NONE
Inscription(s)	LABGROWN 151 LG557249882

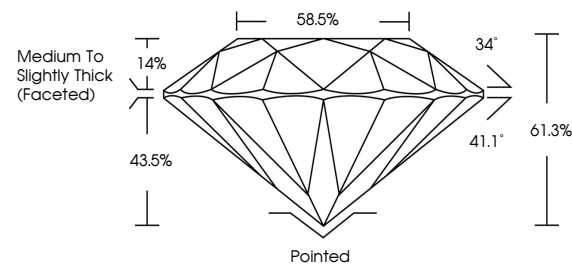
Inscription(s) **LABGROWN 131 LG557249882**  
 Comments: HEARTS & ARROWS  
 This Laboratory Grown Diamond was created by  
 Chemical Vapor Deposition (CVD) growth process and  
 may include post-growth treatment.  
 Type IIa

## LABORATORY GROWN DIAMOND REPORT

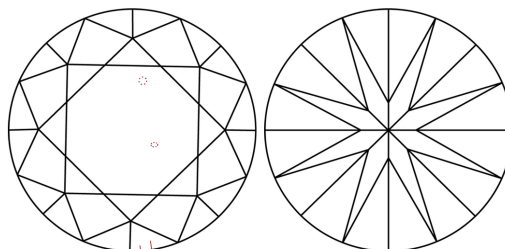
LG557249882

Report verification at [igi.org](http://igi.org)

## PROPORTIONS



## CLARITY CHARACTERISTICS



## KEY TO SYMBOLS

Red symbols indicate internal characteristics.  
Green symbols indicate external characteristics.



**www.igi.org**

LABORATORY GROWN  
DIAMOND REPORT

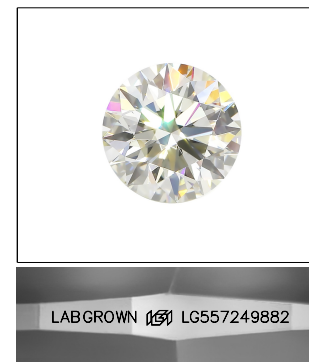
## GRADING SCALES

## CLARITY

IF	VVS <sup>1-2</sup>	VS <sup>1-2</sup>	SI <sup>1-2</sup>	I <sup>1-3</sup>
Internally Flawless	Very Very Slightly Included	Very Slightly Included	Slightly Included	Included

**COLOR**

D E F G H I J Faint Very Light Light

LASERSCRIBE<sup>SM</sup>

Sample Image Used



© IGI 2020, International Gemological Institute

FD - 10 20



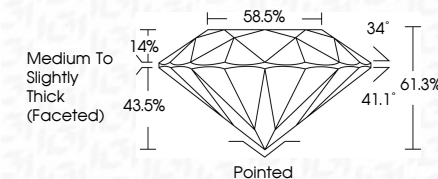
THIS DOCUMENT WAS PRODUCED WITH THE FOLLOWING SECURITY MEASURES: SPECIAL DOCUMENT PAPER, INK SCREENS, WATERMARK, BACKGROUND DESIGNS, HOLOGRAM AND OTHER SECURITY FEATURES NOT LISTED AND DO EXCEED DOCUMENT SECURITY INDUSTRY GUIDELINES

LABORATORY GROWN DIAMOND REPORT

December 2, 2022	
IGI Report Number	LG557249882
Description	LABORATORY GROWN DIAMOND
Shape and Cutting Style	ROUND BRILLIANT
Measurements	9.89 - 9.97 X 6.09 MM

## GRADING RESULTS

Carat Weight	3.70 CARATS
Color Grade	G
Clarity Grade	VS 1
Cut Grade	IDEAL



### ADDITIONAL GRADING INFORMATION

Polish	EXCELLENT
Symmetry	EXCELLENT
Fluorescence	NONE
Inscription(s)	LABGROWN (157) LG557249882

Comments: HEARTS & ARROWS  
This Laboratory Grown Diamond was created by  
Chemical Vapor Deposition (CVD) growth process and  
may include post-growth treatment.  
Type IIa



December 2, 2022  
GI Report No LG557249882  
ROUND BRILLIANT

0.89 - 0.97 X 6.09 MM	3.70 CARATS	G
Carat Weight		
Color Grade		
Clarity Grade	VS 1	
Cut Grade	IDEAL	
Depth	61.8%	
Table	58.5%	
Grain	Medium to Slightly Thick (Faceted)	
Color	Painted	
Polish	EXCELLENT	
Symmetry	EXCELLENT	
Fluorescence	NONE	
Engraving/Inscriptions	LABGROW 561	

Comments:  
PARTS & ARROWS  
is Laboratory Grown Diamond was  
created by Chemical Vapor Deposition  
(CVD) growth process and may include  
post-growth treatment.