



ELECTRONIC COPY

LABORATORY GROWN DIAMOND REPORT

November 30, 2022	
IGI Report Number	LG557241510
Description	LABORATORY GROWN DIAMOND
Shape and Cutting Style	ROUND BRILLIANT
Measurements	6.68 - 6.70 X 4.18 MM

GRADING RESULTS

Carat Weight	1.17 CARAT
Color Grade	G
Clarity Grade	VS 2
Cut Grade	IDEAL

ADDITIONAL GRADING INFORMATION

Polish	EXCELLENT
Symmetry	EXCELLENT
Fluorescence	NONE

Inscription(s) LABGROWN  LG557241510

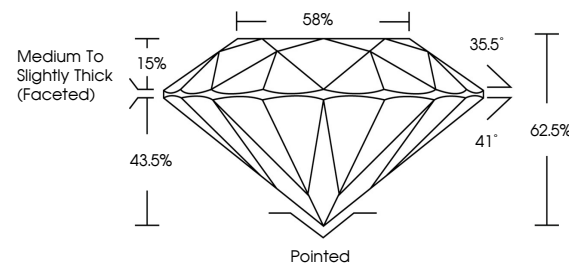
Comments: This Laboratory Grown Diamond was created by Chemical Vapor Deposition (CVD) growth process and may include post-growth treatment.
Type IIa

LABORATORY GROWN DIAMOND REPORT

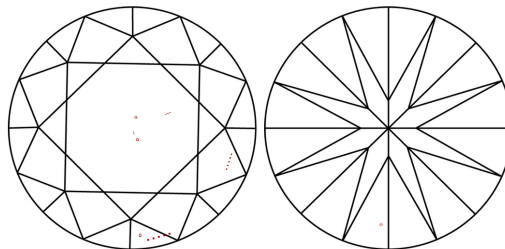
LG557241510

Report verification at igi.org

PROPORTIONS



CLARITY CHARACTERISTICS



KEY TO SYMBOLS

Red symbols indicate internal characteristics.
Green symbols indicate external characteristics.

LABORATORY GROWN
DIAMOND REPORT

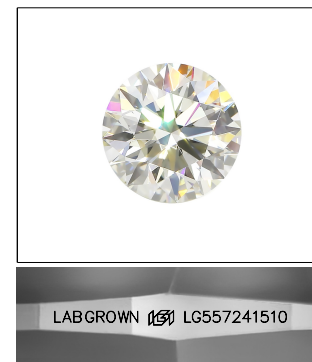
GRADING SCALES

CLARITY

IF	VVS ¹⁻²	VS ¹⁻²	SI ¹⁻²	I ¹⁻³
Internally Flawless	Very Very Slightly Included	Very Slightly Included	Slightly Included	Included

COLOR

D E F G H I J Faint Very Light Light

LASERSCRIBESM

Sample Image Used



© IGI 2020, International Gemological Institute

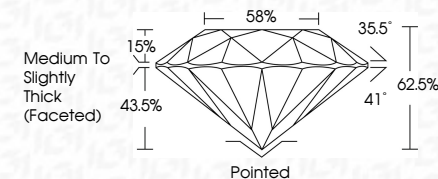
FD - 10 20

www.igi.org

LABORATORY GROWN DIAMOND REPORT

November 30, 2022	
IGI Report Number	LG557241510
Description	LABORATORY GROWN DIAMOND
Shape and Cutting Style	ROUND BRILLIANT
Measurements	6.68 - 6.70 X 4.18 MM

GRADING RESULTS	
Carat Weight	1.17 CARAT
Color Grade	G
Clarity Grade	VS 2
Cut Grade	IDEAL



ADDITIONAL GRADING INFORMATION

Polish	EXCELLENT
Symmetry	EXCELLENT
Fluorescence	NONE
Inscription(s)	LABGROWN (15) LG557241510

Comments: This Laboratory Grown Diamond was created by Chemical Vapor Deposition (CVD) growth process and may include post-growth treatment.
Type IIa



November 30, 2022	1.17 CARAT
IGI Report No LGS57241510	
ROUND BRILLIANT	
6.68 - 6.70 X 4.18 MM	
Color Weight	G
Carat Grade	VS 2
Clarity Grade	IDEAL
Cut Grade	62.5%
Depth	55%
Table	Medium to Slightly Thick Faceted
Grille	
Color	Pointed
Flash	EXCELLENT
Symmetry	EXCELLENT
Fluorescence	NONE
Inscriptions	LASER-GROWN (66) LGS57241510
Comments:	This Laser-Grown Diamond was created by Chemical Vapor Deposition (CVD) growth process and may include post-growth treatment.

Comments:
This Laboratory Grown Diamond was created by Chemical Vapor Deposition (CVD) growth process and may include post-growth treatment.