



**ELECTRONIC COPY**

## LABORATORY GROWN DIAMOND REPORT

November 29, 2022	
IGI Report Number	LG557241208
Description	LABORATORY GROWN DIAMOND
Shape and Cutting Style	ROUND BRILLIANT
Measurements	8.18 - 8.22 X 5.18 MM

## GRADING RESULTS

Carat Weight	2.19 CARATS
Color Grade	F
Clarity Grade	VS 2
Cut Grade	EXCELLENT

### ADDITIONAL GRADING INFORMATION

Polish	EXCELLENT
Symmetry	EXCELLENT
Fluorescence	NONE

Inscription(s) LABGROWN 14 LG557241208

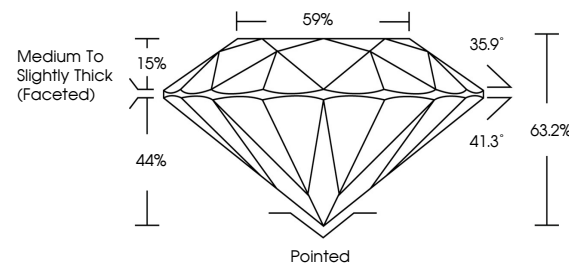
Comments: This Laboratory Grown Diamond was created by Chemical Vapor Deposition (CVD) growth process and may include post-growth treatment.  
Type IIa

## LABORATORY GROWN DIAMOND REPORT

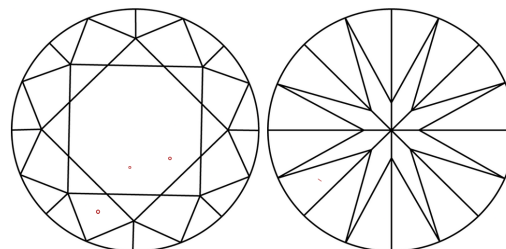
LG557241208

Report verification at [igi.org](http://igi.org)

## PROPORTIONS



## CLARITY CHARACTERISTICS



## KEY TO SYMBOLS

Red symbols indicate internal characteristics.  
Green symbols indicate external characteristics.

LABORATORY GROWN  
DIAMOND REPORT

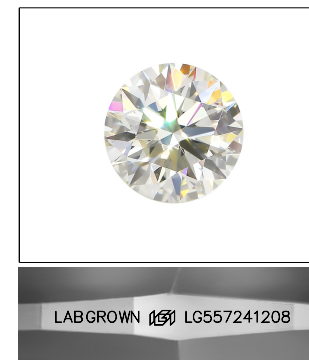
## GRADING SCALES

## CLARITY

IF	VVS <sup>1-2</sup>	VS <sup>1-2</sup>	SI <sup>1-2</sup>	I <sup>1-3</sup>
Internally Flawless	Very Very Slightly Included	Very Slightly Included	Slightly Included	Included

**COLOR**

D E F G H I J Faint Very Light Light

LASERSCRIBE<sup>SM</sup>

Sample Image Used



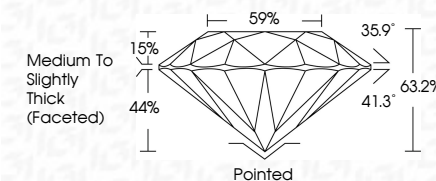
© IGI 2020, International Gemological Institute

FD - 10 20

www.igi.org

## LABORATORY GROWN DIAMOND REPORT

November 29, 2022	
IGI Report Number	LG557241208
Description	LABORATORY GROWN DIAMOND
Shape and Cutting Style	ROUND BRILLIANT
Measurements	8.18 - 8.22 X 5.18 MM
<b>GRADING RESULTS</b>	
Carat Weight	2.19 CARATS
Color Grade	F
Clarity Grade	VS 2
Cut Grade	EXCELLENT



### ADDITIONAL GRADING INFORMATION

Polish	EXCELLENT
Symmetry	EXCELLENT
Fluorescence	NONE
Inscription(s)	LABGROWN (157) LG557241208

Comments: This Laboratory Grown Diamond was created by Chemical Vapor Deposition (CVD) growth process and may include post-growth treatment.  
Type IIa

[illegible]