



**ELECTRONIC COPY**

**LABORATORY GROWN DIAMOND REPORT**

LG557240060

Report verification at [igi.org](http://igi.org)

**LABORATORY GROWN  
DIAMOND REPORT**

**LABORATORY GROWN DIAMOND REPORT**

**LABORATORY GROWN DIAMOND REPORT**

February 26, 2024  
 IGI Report Number **LG557240060**  
 Description **LABORATORY GROWN  
DIAMOND**  
 Shape and Cutting Style **PRINCESS CUT**  
 Measurements **8.66 X 8.61 X 6.42 MM**

**GRADING RESULTS**

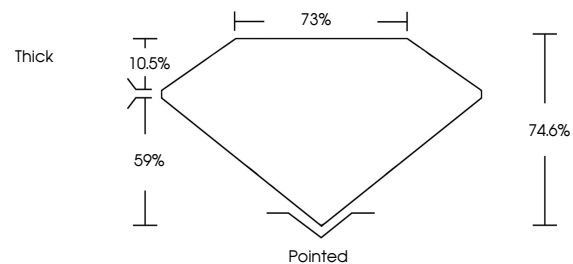
Carat Weight **4.25 CARATS**  
 Color Grade **FANCY INTENSE PINK**  
 Clarity Grade **VVS 2**

**ADDITIONAL GRADING INFORMATION**

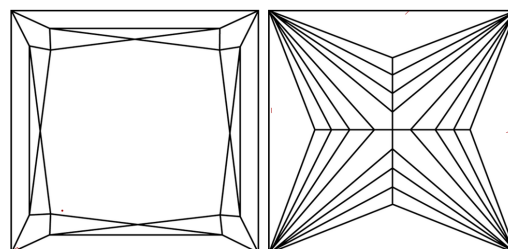
Polish **EXCELLENT**  
 Symmetry **EXCELLENT**  
 Fluorescence **SLIGHT**  
 Inscription(s) **LABGROWN (IGI) LG557240060**

Comments: This Laboratory Grown Diamond was created by Chemical Vapor Deposition (CVD) growth process.  
 Indications of post-growth treatment.

**PROPORTIONS**



**CLARITY CHARACTERISTICS**



**KEY TO SYMBOLS**

Red symbols indicate internal characteristics.  
 Green symbols indicate external characteristics.

**GRADING SCALES**

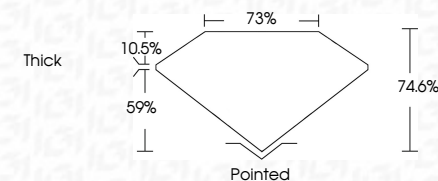
**CLARITY**

IF	VVS <sup>1-2</sup>	VS <sup>1-2</sup>	SI <sup>1-2</sup>	I <sup>1-3</sup>
Internally Flawless	Very Very Slightly Included	Very Slightly Included	Slightly Included	Included

**COLOR**

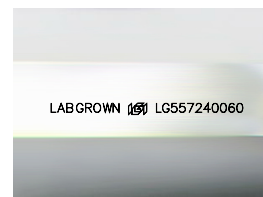
D	E	F	G	H	I	J	Faint	Very Light	Light
Light Tint	Fancy Light	Fancy	Fancy Intense	Fancy Vivid					

February 26, 2024  
 IGI Report Number **LG557240060**  
 Description **LABORATORY GROWN  
DIAMOND**  
 Shape and Cutting Style **PRINCESS CUT**  
 Measurements **8.66 X 8.61 X 6.42 MM**  
**GRADING RESULTS**  
 Carat Weight **4.25 CARATS**  
 Color Grade **FANCY INTENSE PINK**  
 Clarity Grade **VVS 2**



**ADDITIONAL GRADING INFORMATION**

Polish **EXCELLENT**  
 Symmetry **EXCELLENT**  
 Fluorescence **SLIGHT**  
 Inscription(s) **LABGROWN (IGI) LG557240060**  
 Comments: This Laboratory Grown Diamond was created by Chemical Vapor Deposition (CVD) growth process.  
 Indications of post-growth treatment.



Sample Image Used



**IGI**

February 26, 2024  
 IGI Report No LG557240060  
**PRINCESS CUT**  
**4.25 CARATS**  
**FANCY INTENSE PINK**  
**VVS 2**  
**8.66 X 8.61 X 6.42 MM**  
 Carat Weight  
 Color Grade  
 Clarity Grade  
 Depth  
 Table  
 Girdle  
 Thick  
 Pointed  
**EXCELLENT**  
**EXCELLENT**  
**SLIGHT**  
**LABGROWN (IGI) LG557240060**  
 Inscription(s)  
 Comments: This Laboratory Grown Diamond was created by Chemical Vapor Deposition (CVD) growth process.  
 Indications of post-growth treatment.