



**INTERNATIONAL  
GEMOLOGICAL  
INSTITUTE**

**ELECTRONIC COPY**

**LABORATORY GROWN  
DIAMOND REPORT**

**LG557238096**

**IGI LABORATORY GROWN  
DIAMOND ID REPORT**

December 29, 2022

IGI Report Number **LG557238096**

**PEAR BRILLIANT**

**8.22 X 5.31 X 3.21 MM**

|                |                            |
|----------------|----------------------------|
| Carat Weight   | 0.81 CARAT                 |
| Color Grade    | F                          |
| Clarity Grade  | VS 1                       |
| Polish         | EXCELLENT                  |
| Symmetry       | VERY GOOD                  |
| Fluorescence   | NONE                       |
| Inscription(s) | LABGROWN (LGI) LG557238096 |

Comments: As Grown - No indication of post-growth treatment. This Laboratory Grown Diamond was created by High Pressure High Temperature (HPHT) growth process.

**COUNTRY OF ORIGIN : UKRAINE**  
Origin purported by the supplier

**LABORATORY GROWN DIAMOND REPORT**

**IGI LABORATORY GROWN DIAMOND IDENTIFICATION REPORT**

December 29, 2022

IGI Report Number **LG557238096**

Description **LABORATORY GROWN DIAMOND**

Shape and Cutting Style **PEAR BRILLIANT**

Measurements **8.22 X 5.31 X 3.21 MM**

**GRADING RESULTS**

|               |            |
|---------------|------------|
| Carat Weight  | 0.81 CARAT |
| Color Grade   | F          |
| Clarity Grade | VS 1       |

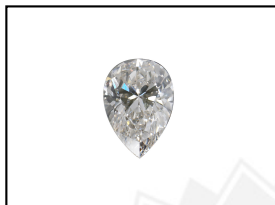
**ADDITIONAL GRADING INFORMATION**

|                |                            |
|----------------|----------------------------|
| Polish         | EXCELLENT                  |
| Symmetry       | VERY GOOD                  |
| Fluorescence   | NONE                       |
| Inscription(s) | LABGROWN (LGI) LG557238096 |

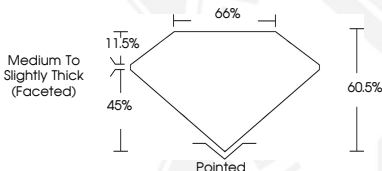
Comments: As Grown - No indication of post-growth treatment. This Laboratory Grown Diamond was created by High Pressure High Temperature (HPHT) growth process.

**COUNTRY OF ORIGIN : UKRAINE**

Origin purported by the supplier



**LASERSCRIBE<sup>SM</sup>**  
Sample Images Used



THIS DOCUMENT WAS PRODUCED WITH THE FOLLOWING SECURITY MEASURES: SPECIAL DOCUMENT PAPER, INK SCREENS, WATERMARK, BACKGROUND DESIGN, HOLOGRAM AND OTHER SECURITY FEATURES NOT LISTED AND DO EXCEED DOCUMENT SECURITY INDUSTRY GUIDELINES.

For terms & conditions and to verify this report, please visit [www.igi.org](http://www.igi.org)

**IGI LABORATORY GROWN  
DIAMOND ID REPORT**

December 29, 2022

IGI Report Number **LG557238096**

**PEAR BRILLIANT**

**8.22 X 5.31 X 3.21 MM**

|                |                            |
|----------------|----------------------------|
| Carat Weight   | 0.81 CARAT                 |
| Color Grade    | F                          |
| Clarity Grade  | VS 1                       |
| Polish         | EXCELLENT                  |
| Symmetry       | VERY GOOD                  |
| Fluorescence   | NONE                       |
| Inscription(s) | LABGROWN (LGI) LG557238096 |

Comments: As Grown - No indication of post-growth treatment. This Laboratory Grown Diamond was created by High Pressure High Temperature (HPHT) growth process.

**COUNTRY OF ORIGIN : UKRAINE**  
Origin purported by the supplier