



ELECTRONIC COPY

LG557218372 Report verification at igi.org



July 12, 2024 IGI Report Number LG557218372 Description LABORATORY GROWN DIAMOND Shape and Cutting Style ROUND BRILLIANT Measurements 9.38 - 9.45 X 5.88 MM GRADING RESULTS Carat Weight 3.30 CARATS Color Grade FANCY INTENSE PINK Clarity Grade VS 1 Cut Grade EXCELLENT

July 12, 2024 IGI Report Number LG557218372 Description LABORATORY GROWN DIAMOND Shape and Cutting Style ROUND BRILLIANT Measurements 9.38 - 9.45 X 5.88 MM

GRADING RESULTS

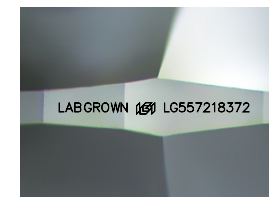
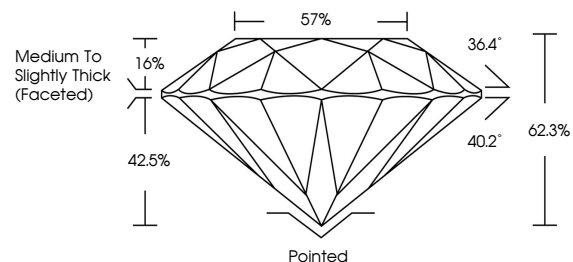
Carat Weight 3.30 CARATS Color Grade FANCY INTENSE PINK Clarity Grade VS 1 Cut Grade EXCELLENT

ADDITIONAL GRADING INFORMATION

Polish EXCELLENT Symmetry EXCELLENT Fluorescence SLIGHT Inscription(s) LABGROWN (IGI) LG557218372

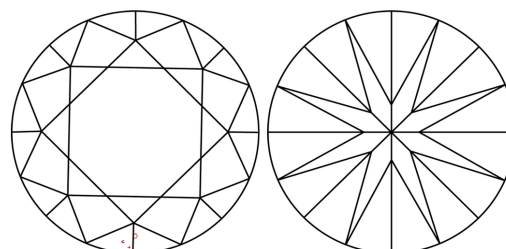
Comments: This Laboratory Grown Diamond was created by Chemical Vapor Deposition (CVD) growth process. Indications of post-growth treatment.

PROPORTIONS



Sample Image Used

CLARITY CHARACTERISTICS



KEY TO SYMBOLS

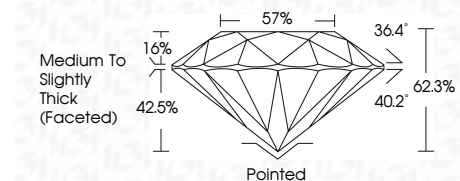
Red symbols indicate internal characteristics. Green symbols indicate external characteristics.

COLOR

D E F G H I J Faint Very Light Light

CLARITY

IF VS 1-2 VS 1-2 SI 1-2 I 1-3 Internally Flawless Very Very Slightly Included Very Slightly Included Slightly Included Included



ADDITIONAL GRADING INFORMATION

Polish EXCELLENT Symmetry EXCELLENT Fluorescence SLIGHT Inscription(s) LABGROWN (IGI) LG557218372 Comments: This Laboratory Grown Diamond was created by Chemical Vapor Deposition (CVD) growth process. Indications of post-growth treatment.



Summary of report details including date, report number, description, measurements, grading results, and additional information.