



ELECTRONIC COPY

LABORATORY GROWN DIAMOND REPORT

LG555291013

Report verification at igi.org

**LABORATORY GROWN
DIAMOND REPORT**

LABORATORY GROWN DIAMOND REPORT

LABORATORY GROWN DIAMOND REPORT

February 26, 2024
 IGI Report Number **LG555291013**
 Description **LABORATORY GROWN
DIAMOND**
 Shape and Cutting Style **PRINCESS CUT**
 Measurements **8.73 X 8.73 X 6.44 MM**

GRADING RESULTS

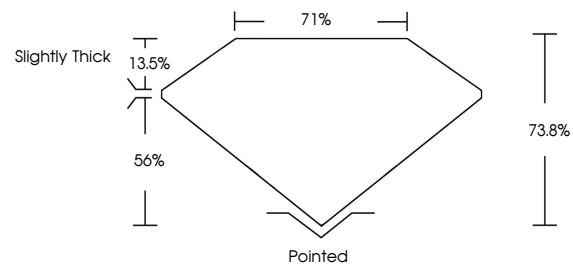
Carat Weight **4.40 CARATS**
 Color Grade **FANCY INTENSE PINK**
 Clarity Grade **SI 1**

ADDITIONAL GRADING INFORMATION

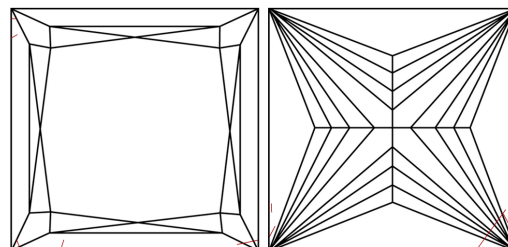
Polish **EXCELLENT**
 Symmetry **EXCELLENT**
 Fluorescence **SLIGHT**
 Inscription(s) **LABGROWN (IGI) LG555291013**

Comments: This Laboratory Grown Diamond was created by Chemical Vapor Deposition (CVD) growth process and may include post-growth treatment. Type IIa

PROPORTIONS



CLARITY CHARACTERISTICS



KEY TO SYMBOLS

Red symbols indicate internal characteristics.
 Green symbols indicate external characteristics.

GRADING SCALES

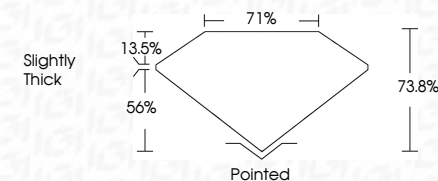
CLARITY

| IF | VVS ¹⁻² | VS ¹⁻² | SI ¹⁻² | I ¹⁻³ |
|---------------------|-----------------------------|------------------------|-------------------|------------------|
| Internally Flawless | Very Very Slightly Included | Very Slightly Included | Slightly Included | Included |

COLOR

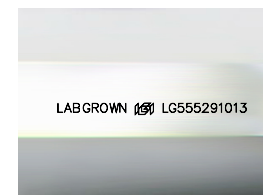
| D | E | F | G | H | I | J | Faint | Very Light | Light |
|------------|-------------|-------|---------------|-------------|---|---|-------|------------|-------|
| Light Tint | Fancy Light | Fancy | Fancy Intense | Fancy Vivid | | | | | |

February 26, 2024
 IGI Report Number **LG555291013**
 Description **LABORATORY GROWN
DIAMOND**
 Shape and Cutting Style **PRINCESS CUT**
 Measurements **8.73 X 8.73 X 6.44 MM**
GRADING RESULTS
 Carat Weight **4.40 CARATS**
 Color Grade **FANCY INTENSE PINK**
 Clarity Grade **SI 1**



ADDITIONAL GRADING INFORMATION

Polish **EXCELLENT**
 Symmetry **EXCELLENT**
 Fluorescence **SLIGHT**
 Inscription(s) **LABGROWN (IGI) LG555291013**
 Comments: This Laboratory Grown Diamond was created by Chemical Vapor Deposition (CVD) growth process and may include post-growth treatment. Type IIa



Sample Image Used



IGI

February 26, 2024
 IGI Report No LG555291013
PRINCESS CUT
4.40 CARATS
8.73 X 8.73 X 6.44 MM
FANCY INTENSE PINK
SI 1
73.8%
71%
 Slightly Thick
 Pointed
EXCELLENT
EXCELLENT
SLIGHT
LABGROWN (IGI) LG555291013
 Comments: This Laboratory Grown Diamond was created by Chemical Vapor Deposition (CVD) growth process and may include post-growth treatment. Type IIa