



ELECTRONIC COPY

LABORATORY GROWN DIAMOND REPORT

November 18, 2022
 IGI Report Number **LG555289763**
 Description **LABORATORY GROWN
DIAMOND**
 Shape and Cutting Style **CUSHION BRILLIANT**
 Measurements **8.26 X 6.86 X 4.70 MM**

GRADING RESULTS

Carat Weight **2.04 CARATS**
 Color Grade **F**
 Clarity Grade **VS 1**

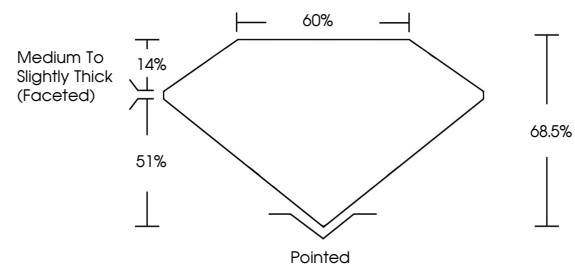
ADDITIONAL GRADING INFORMATION

Polish **EXCELLENT**
 Symmetry **EXCELLENT**
 Fluorescence **NONE**
 Inscription(s) **LABGROWN (IGI) LG555289763**

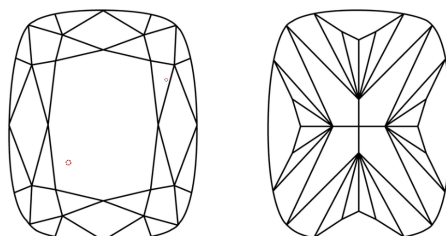
Comments: This Laboratory Grown Diamond was created by Chemical Vapor Deposition (CVD) growth process and may include post-growth treatment. Type IIa

LG555289763

PROPORTIONS



CLARITY CHARACTERISTICS



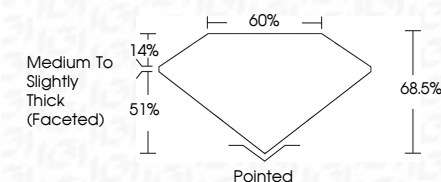
KEY TO SYMBOLS

Red symbols indicate internal characteristics.
 Green symbols indicate external characteristics.

GRADING SCALES

| | | | | | | |
|-----------------------------|------------------------------|-----------------------------|------------------------|-------------------|-----------|---|
| COLOR GRADING SCALE | CL | NC | FT | VLT | LT | |
| | COLORLESS D-F | NEAR COLORLESS G-J | FAINT K-M | VERY LIGHT N-R | LIGHT S-Z | |
| CLARITY (10x) GRADING SCALE | FL | IF | VVS | VS | SI | I |
| | FLAWLESS INTERNALLY FLAWLESS | VERY VERY SLIGHTLY INCLUDED | VERY SLIGHTLY INCLUDED | SLIGHTLY INCLUDED | INCLUDED | |

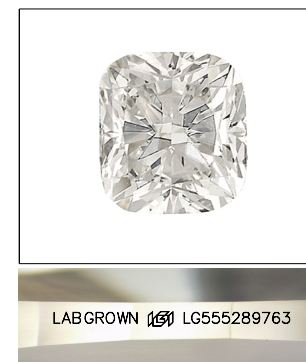
November 18, 2022
 IGI Report Number **LG555289763**
 Description **LABORATORY GROWN
DIAMOND**
 Shape and Cutting Style **CUSHION BRILLIANT**
 Measurements **8.26 X 6.86 X 4.70 MM**
GRADING RESULTS
 Carat Weight **2.04 CARATS**
 Color Grade **F**
 Clarity Grade **VS 1**



ADDITIONAL GRADING INFORMATION

Polish **EXCELLENT**
 Symmetry **EXCELLENT**
 Fluorescence **NONE**
 Inscription(s) **LABGROWN (IGI) LG555289763**

Comments: This Laboratory Grown Diamond was created by Chemical Vapor Deposition (CVD) growth process and may include post-growth treatment. Type IIa



LASERSCRIBESM

Sample Image Used



IGI

November 18, 2022
 IGI Report No. **LG555289763**
CUSHION BRILLIANT
 8.26 X 6.86 X 4.70 MM
 Carat Weight **2.04 CARATS**
 Color Grade **F**
 Clarity Grade **VS 1**
 Depth **68.5%**
 Table **60%**
 Girdle **Medium To Slightly Thick (Faceted)**
 Culet **Pointed**
 Polish **EXCELLENT**
 Symmetry **EXCELLENT**
 Fluorescence **NONE**
 Inscription(s) **LABGROWN (IGI) LG555289763**
 Comments: This Laboratory Grown Diamond was created by Chemical Vapor Deposition (CVD) growth process and may include post-growth treatment. Type IIa