



**ELECTRONIC COPY**

**LABORATORY GROWN DIAMOND REPORT**

LG555288239

Report verification at [igi.org](http://igi.org)

**LABORATORY GROWN  
DIAMOND REPORT**

**LABORATORY GROWN DIAMOND REPORT**

**LABORATORY GROWN DIAMOND REPORT**

February 26, 2024  
 IGI Report Number **LG555288239**  
 Description **LABORATORY GROWN  
DIAMOND**  
 Shape and Cutting Style **PRINCESS CUT**  
 Measurements **9.46 X 9.39 X 6.98 MM**

**GRADING RESULTS**

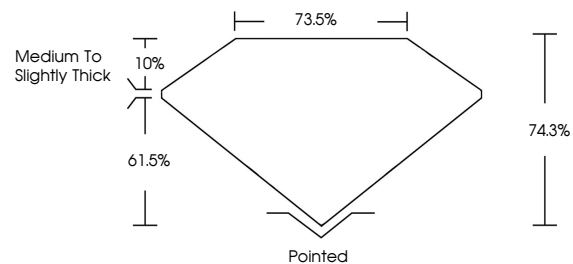
Carat Weight **5.16 CARATS**  
 Color Grade **FANCY INTENSE PINK**  
 Clarity Grade **VS 1**

**ADDITIONAL GRADING INFORMATION**

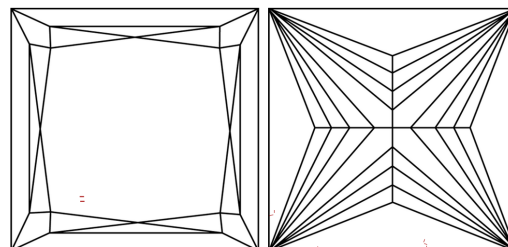
Polish **EXCELLENT**  
 Symmetry **EXCELLENT**  
 Fluorescence **SLIGHT**  
 Inscription(s) **LABGROWN (IGI) LG555288239**

Comments: This Laboratory Grown Diamond was created by Chemical Vapor Deposition (CVD) growth process and may include post-growth treatment. Type IIa

**PROPORTIONS**



**CLARITY CHARACTERISTICS**



**KEY TO SYMBOLS**

Red symbols indicate internal characteristics.  
 Green symbols indicate external characteristics.

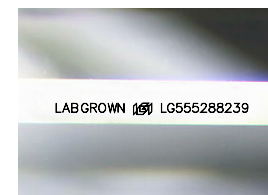
**GRADING SCALES**

**CLARITY**

IF	VVS <sup>1-2</sup>	VS <sup>1-2</sup>	SI <sup>1-2</sup>	I <sup>1-3</sup>
Internally Flawless	Very Very Slightly Included	Very Slightly Included	Slightly Included	Included

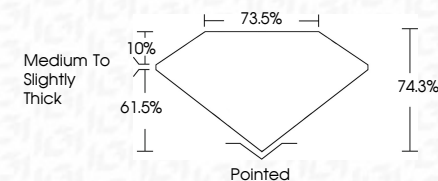
**COLOR**

D	E	F	G	H	I	J	Faint	Very Light	Light
Light Tint	Fancy Light	Fancy	Fancy Intense	Fancy Vivid					



Sample Image Used

February 26, 2024  
 IGI Report Number **LG555288239**  
 Description **LABORATORY GROWN  
DIAMOND**  
 Shape and Cutting Style **PRINCESS CUT**  
 Measurements **9.46 X 9.39 X 6.98 MM**  
**GRADING RESULTS**  
 Carat Weight **5.16 CARATS**  
 Color Grade **FANCY INTENSE PINK**  
 Clarity Grade **VS 1**



**ADDITIONAL GRADING INFORMATION**

Polish **EXCELLENT**  
 Symmetry **EXCELLENT**  
 Fluorescence **SLIGHT**  
 Inscription(s) **LABGROWN (IGI) LG555288239**

Comments: This Laboratory Grown Diamond was created by Chemical Vapor Deposition (CVD) growth process and may include post-growth treatment. Type IIa



**IGI**

February 26, 2024  
 IGI Report No. **LG555288239**  
**PRINCESS CUT**  
**5.16 CARATS**  
**9.46 X 9.39 X 6.98 MM**  
**FANCY INTENSE PINK**  
**VS 1**  
**74.3%**  
**61.5%**  
**10%**  
**Medium to Slightly Thick**  
**Pointed**  
**EXCELLENT**  
**EXCELLENT**  
**SLIGHT**  
**LABGROWN (IGI) LG555288239**

Comments: This Laboratory Grown Diamond was created by Chemical Vapor Deposition (CVD) growth process and may include post-growth treatment. Type IIa

