



**ELECTRONIC COPY**

**LABORATORY GROWN DIAMOND REPORT**

February 26, 2024  
 IGI Report Number **LG555283795**  
 Description **LABORATORY GROWN  
DIAMOND**  
 Shape and Cutting Style **SQUARE CUSHION BRILLIANT**  
 Measurements **8.11 X 8.04 X 5.37 MM**

**GRADING RESULTS**

Carat Weight **3.01 CARATS**  
 Color Grade **FANCY VIVID PINK**  
 Clarity Grade **VS 1**

**ADDITIONAL GRADING INFORMATION**

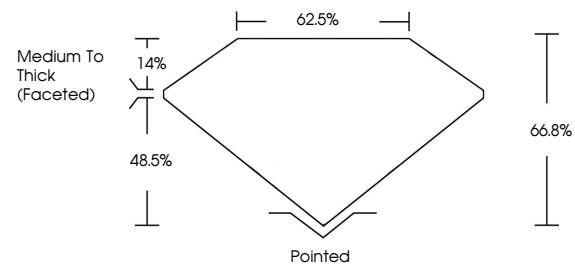
Polish **VERY GOOD**  
 Symmetry **EXCELLENT**  
 Fluorescence **SLIGHT**  
 Inscription(s) **LABGROWN (IGI) LG555283795**

Comments: This Laboratory Grown Diamond was created by Chemical Vapor Deposition (CVD) growth process.  
 Indications of post-growth treatment.

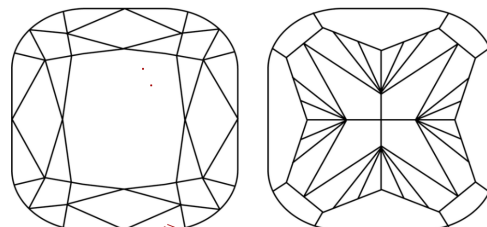
**LABORATORY GROWN DIAMOND REPORT**

**LG555283795**  
 Report verification at [igi.org](http://igi.org)

**PROPORTIONS**



**CLARITY CHARACTERISTICS**



**KEY TO SYMBOLS**

Red symbols indicate internal characteristics.  
 Green symbols indicate external characteristics.

**LABORATORY GROWN  
DIAMOND REPORT**

**GRADING SCALES**

**CLARITY**

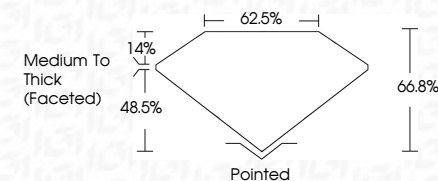
IF	VVS <sup>1-2</sup>	VS <sup>1-2</sup>	SI <sup>1-2</sup>	I <sup>1-3</sup>
Internally Flawless	Very Very Slightly Included	Very Slightly Included	Slightly Included	Included

**COLOR**

D	E	F	G	H	I	J	Faint	Very Light	Light
Light Tint	Fancy Light	Fancy	Fancy Intense	Fancy Vivid					

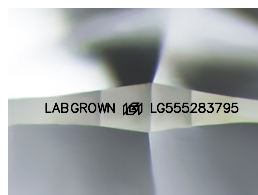
**LABORATORY GROWN DIAMOND REPORT**

February 26, 2024  
 IGI Report Number **LG555283795**  
 Description **LABORATORY GROWN  
DIAMOND**  
 Shape and Cutting Style **SQUARE CUSHION BRILLIANT**  
 Measurements **8.11 X 8.04 X 5.37 MM**  
**GRADING RESULTS**  
 Carat Weight **3.01 CARATS**  
 Color Grade **FANCY VIVID PINK**  
 Clarity Grade **VS 1**



**ADDITIONAL GRADING INFORMATION**

Polish **VERY GOOD**  
 Symmetry **EXCELLENT**  
 Fluorescence **SLIGHT**  
 Inscription(s) **LABGROWN (IGI) LG555283795**  
 Comments: This Laboratory Grown Diamond was created by Chemical Vapor Deposition (CVD) growth process.  
 Indications of post-growth treatment.



Sample Image Used



**IGI**



February 26, 2024  
 IGI Report No **LG555283795**  
**SQUARE CUSHION BRILLIANT**  
**8.11 X 8.04 X 5.37 MM**  
 Carat Weight **3.01 CARATS**  
 Color Grade **FANCY VIVID PINK**  
 Clarity Grade **VS 1**  
 Depth **66.8%**  
 Table **62.5%**  
 Girdle **Medium To Thick (Faceted)**  
 Culet **Pointed**  
 Polish **VERY GOOD**  
 Symmetry **EXCELLENT**  
 Fluorescence **SLIGHT**  
 Inscription(s) **LABGROWN (IGI) LG555283795**  
 Comments: This Laboratory Grown Diamond was created by Chemical Vapor Deposition (CVD) growth process.  
 Indications of post-growth treatment.