



**ELECTRONIC COPY**

**LABORATORY GROWN DIAMOND REPORT**

February 26, 2024  
 IGI Report Number **LG555273275**  
 Description **LABORATORY GROWN  
DIAMOND**  
 Shape and Cutting Style **SQUARE CUSHION BRILLIANT**  
 Measurements **9.45 X 9.36 X 6.52 MM**

**GRADING RESULTS**

Carat Weight **5.01 CARATS**  
 Color Grade **FANCY INTENSE PINK**  
 Clarity Grade **VS 1**

**ADDITIONAL GRADING INFORMATION**

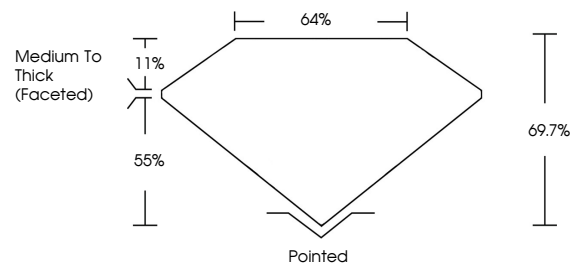
Polish **EXCELLENT**  
 Symmetry **EXCELLENT**  
 Fluorescence **SLIGHT**  
 Inscription(s) **LABGROWN (IGI) LG555273275**

Comments: This Laboratory Grown Diamond was created by Chemical Vapor Deposition (CVD) growth process.  
 Indications of post-growth treatment.

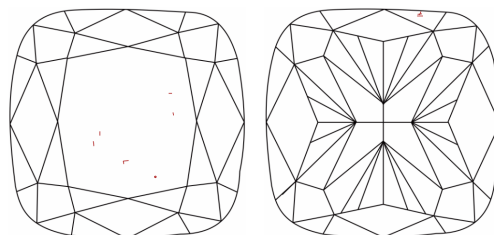
**LABORATORY GROWN DIAMOND REPORT**

**LG555273275**  
 Report verification at [igi.org](http://igi.org)

**PROPORTIONS**



**CLARITY CHARACTERISTICS**



**KEY TO SYMBOLS**

Red symbols indicate internal characteristics.  
 Green symbols indicate external characteristics.

**LABORATORY GROWN  
DIAMOND REPORT**

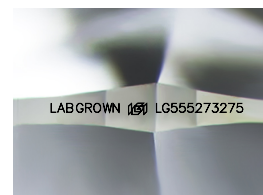
**GRADING SCALES**

**CLARITY**

| IF                  | VVS <sup>1-2</sup>          | VS <sup>1-2</sup>      | SI <sup>1-2</sup> | I <sup>1-3</sup> |
|---------------------|-----------------------------|------------------------|-------------------|------------------|
| Internally Flawless | Very Very Slightly Included | Very Slightly Included | Slightly Included | Included         |

**COLOR**

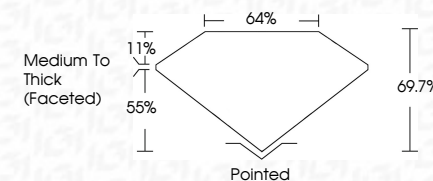
| D          | E           | F     | G             | H           | I | J | Faint | Very Light | Light |
|------------|-------------|-------|---------------|-------------|---|---|-------|------------|-------|
| Light Tint | Fancy Light | Fancy | Fancy Intense | Fancy Vivid |   |   |       |            |       |



Sample Image Used

**LABORATORY GROWN DIAMOND REPORT**

February 26, 2024  
 IGI Report Number **LG555273275**  
 Description **LABORATORY GROWN  
DIAMOND**  
 Shape and Cutting Style **SQUARE CUSHION BRILLIANT**  
 Measurements **9.45 X 9.36 X 6.52 MM**  
**GRADING RESULTS**  
 Carat Weight **5.01 CARATS**  
 Color Grade **FANCY INTENSE PINK**  
 Clarity Grade **VS 1**



**ADDITIONAL GRADING INFORMATION**

Polish **EXCELLENT**  
 Symmetry **EXCELLENT**  
 Fluorescence **SLIGHT**  
 Inscription(s) **LABGROWN (IGI) LG555273275**  
 Comments: This Laboratory Grown Diamond was created by Chemical Vapor Deposition (CVD) growth process.  
 Indications of post-growth treatment.



February 26, 2024  
 IGI Report No **LG555273275**  
**SQUARE CUSHION BRILLIANT**  
**9.45 X 9.36 X 6.52 MM**  
 Carat Weight **5.01 CARATS**  
 Color Grade **FANCY INTENSE PINK**  
 Clarity Grade **VS 1**  
 Depth **69.7%**  
 Table **64%**  
 Girdle **Medium To Thick (Faceted)**  
 Culet **Pointed**  
 Polish **EXCELLENT**  
 Symmetry **EXCELLENT**  
 Fluorescence **SLIGHT**  
 Inscription(s) **LABGROWN (IGI) LG555273275**  
 Comments: This Laboratory Grown Diamond was created by Chemical Vapor Deposition (CVD) growth process.  
 Indications of post-growth treatment.