



ELECTRONIC COPY

LABORATORY GROWN DIAMOND REPORT

February 26, 2024
 IGI Report Number **LG553261565**
 Description **LABORATORY GROWN
DIAMOND**
 Shape and Cutting Style **SQUARE CUSHION BRILLIANT**
 Measurements **8.81 X 8.69 X 5.86 MM**

GRADING RESULTS

Carat Weight **4.01 CARATS**
 Color Grade **FANCY VIVID PINK**
 Clarity Grade **VS 1**

ADDITIONAL GRADING INFORMATION

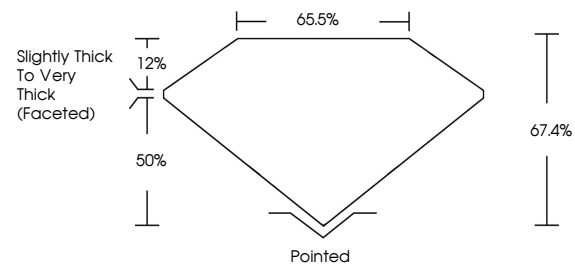
Polish **EXCELLENT**
 Symmetry **EXCELLENT**
 Fluorescence **SLIGHT**
 Inscription(s) **LABGROWN (IGI) LG553261565**

Comments: This Laboratory Grown Diamond was created by Chemical Vapor Deposition (CVD) growth process and may include post-growth treatment. Type IIa

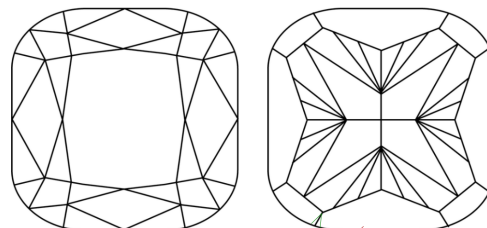
LABORATORY GROWN DIAMOND REPORT

LG553261565
 Report verification at igi.org

PROPORTIONS



CLARITY CHARACTERISTICS



KEY TO SYMBOLS

Red symbols indicate internal characteristics.
 Green symbols indicate external characteristics.

**LABORATORY GROWN
DIAMOND REPORT**

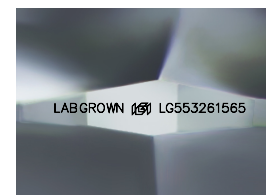
GRADING SCALES

CLARITY

IF	VVS ¹⁻²	VS ¹⁻²	SI ¹⁻²	I ¹⁻³
Internally Flawless	Very Very Slightly Included	Very Slightly Included	Slightly Included	Included

COLOR

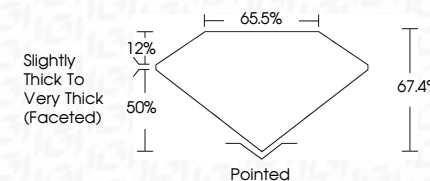
D	E	F	G	H	I	J	Faint	Very Light	Light
Light Tint	Fancy Light	Fancy	Fancy Intense	Fancy Vivid					



Sample Image Used

LABORATORY GROWN DIAMOND REPORT

February 26, 2024
 IGI Report Number **LG553261565**
 Description **LABORATORY GROWN
DIAMOND**
 Shape and Cutting Style **SQUARE CUSHION BRILLIANT**
 Measurements **8.81 X 8.69 X 5.86 MM**
GRADING RESULTS
 Carat Weight **4.01 CARATS**
 Color Grade **FANCY VIVID PINK**
 Clarity Grade **VS 1**



ADDITIONAL GRADING INFORMATION

Polish **EXCELLENT**
 Symmetry **EXCELLENT**
 Fluorescence **SLIGHT**
 Inscription(s) **LABGROWN (IGI) LG553261565**
 Comments: This Laboratory Grown Diamond was created by Chemical Vapor Deposition (CVD) growth process and may include post-growth treatment. Type IIa



IGI

February 26, 2024
 IGI Report No **LG553261565**
SQUARE CUSHION BRILLIANT
8.81 X 8.69 X 5.86 MM
 Carat Weight **4.01 CARATS**
 Color Grade **FANCY VIVID PINK**
 Clarity Grade **VS 1**
 Depth **67.4%**
 Table **66.0%**
 Girdle **Slightly Thick To Very Thick (Faceted)**
 Culet **Pointed**
 Polish **EXCELLENT**
 Symmetry **EXCELLENT**
 Fluorescence **SLIGHT**
 Inscription(s) **LABGROWN (IGI) LG553261565**

Comments: This Laboratory Grown Diamond was created by Chemical Vapor Deposition (CVD) growth process and may include post-growth treatment. Type IIa

