



**INTERNATIONAL  
GEMOLOGICAL  
INSTITUTE**

**ELECTRONIC COPY**

**LABORATORY GROWN  
DIAMOND REPORT**

**LG553227696**

**IGI LABORATORY GROWN  
DIAMOND ID REPORT**

November 10, 2022

IGI Report Number **LG553227696**

**EMERALD CUT**

**5.62 X 3.76 X 2.42 MM**

Carat Weight	0.51 CARAT
Color Grade	FANCY VIVID BLUE
Clarity Grade	VS 2
Polish	VERY GOOD
Symmetry	VERY GOOD
Fluorescence	NONE
Inscription(s)	LABGROWN IGI LG553227696

Comments: This Laboratory Grown Diamond was created by Chemical Vapor Deposition (CVD) growth process. Indications of post-growth treatment.

**LABORATORY GROWN DIAMOND REPORT**

**IGI LABORATORY GROWN DIAMOND IDENTIFICATION REPORT**

November 10, 2022

IGI Report Number **LG553227696**

Description **LABORATORY GROWN DIAMOND**

Shape and Cutting Style **EMERALD CUT**

Measurements **5.62 X 3.76 X 2.42 MM**

**GRADING RESULTS**

Carat Weight **0.51 CARAT**

Color Grade **FANCY VIVID BLUE**

Clarity Grade **VS 2**

**ADDITIONAL GRADING INFORMATION**

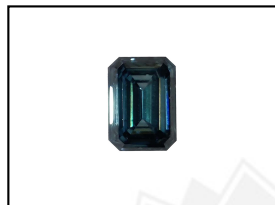
Polish **VERY GOOD**

Symmetry **VERY GOOD**

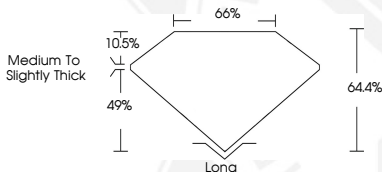
Fluorescence **NONE**

Inscription(s) **LABGROWN IGI LG553227696**

Comments: This Laboratory Grown Diamond was created by Chemical Vapor Deposition (CVD) growth process. Indications of post-growth treatment.



**LASERSCRIBE<sup>SM</sup>**  
Sample Images Used



**IGI LABORATORY GROWN  
DIAMOND ID REPORT**

November 10, 2022

IGI Report Number **LG553227696**

**EMERALD CUT**

**5.62 X 3.76 X 2.42 MM**

Carat Weight	0.51 CARAT
Color Grade	FANCY VIVID BLUE
Clarity Grade	VS 2
Polish	VERY GOOD
Symmetry	VERY GOOD
Fluorescence	NONE
Inscription(s)	LABGROWN IGI LG553227696

Comments: This Laboratory Grown Diamond was created by Chemical Vapor Deposition (CVD) growth process. Indications of post-growth treatment.

THIS DOCUMENT WAS PRODUCED WITH THE FOLLOWING SECURITY MEASURES: SPECIAL DOCUMENT PAPER, INK SCREENS, WATERMARK, BACKGROUND DESIGN, HOLOGRAM AND OTHER SECURITY FEATURES NOT LISTED AND DO EXCEED DOCUMENT SECURITY INDUSTRY GUIDELINES.

For terms & conditions and to verify this report, please visit [www.igi.org](http://www.igi.org)