



ELECTRONIC COPY

LABORATORY GROWN DIAMOND REPORT

February 26, 2024	
IGI Report Number	LG553225176
Description	LABORATORY GROWN DIAMOND
Shape and Cutting Style	PRINCESS CUT
Measurements	8.70 X 8.70 X 6.31 MM

GRADING RESULTS

Carat Weight	4.01 CARATS
Color Grade	FANCY PINK
Clarity Grade	VS 2

ADDITIONAL GRADING INFORMATION

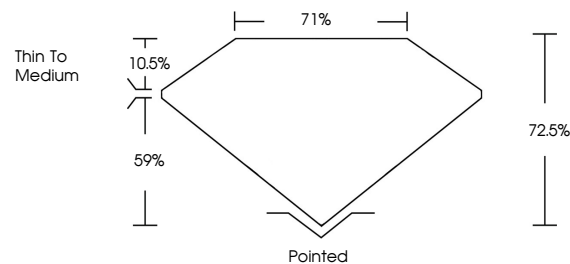
Polish	EXCELLENT
Symmetry	EXCELLENT
Fluorescence	SLIGHT
Inscription(s)	LABGROWN 15 LG553225176

Comments: This Laboratory Grown Diamond was created by Chemical Vapor Deposition (CVD) growth process.
Indications of post-growth treatment.

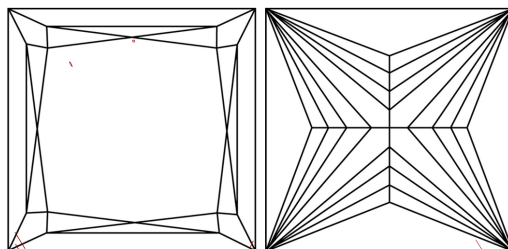
LABORATORY GROWN DIAMOND REPORT

LG553225176
Report verification at igi.org

PROPORTIONS



CLARITY CHARACTERISTICS



KEY TO SYMBOLS

Red symbols indicate internal characteristics.
Green symbols indicate external characteristics.

LABORATORY GROWN
DIAMOND REPORT

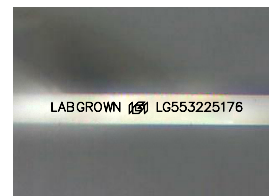
GRADING SCALES

CLARITY

IF	VVS ¹⁻²	VS ¹⁻²	SI ¹⁻²	I ¹⁻³
Internally Flawless	Very Very Slightly Included	Very Slightly Included	Slightly Included	Included

COLOR

D	E	F	G	H	I	J	Faint	Very Light	Light
Light Tint			Fancy Light		Fancy		Fancy Intense		Fancy Vivid



Sample Image Used

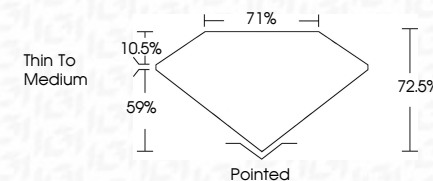


© IGI 2020, International Gemological Institute

FD - 10 20



February 26, 2024	
IGI Report Number	LG553225176
Description	LABORATORY GROWN DIAMOND
Shape and Cutting Style	PRINCESS CUT
Measurements	8.70 X 8.70 X 6.31 MM
GRADING RESULTS	
Carat Weight	4.01 CARATS
Color Grade	FANCY PINK
Clarity Grade	VS 2



ADDITIONAL GRADING INFORMATION

Polish	EXCELLENT
Symmetry	EXCELLENT
Fluorescence	SLIGHT
Inscription(s)	LABGROWN (15) LG553225176

Comments: This Laboratory Grown Diamond was created by Chemical Vapor Deposition (CVD) growth process.
Indications of post-growth treatment.

February 26, 2024	GI Report No LG583226176	
PRINCESS CUT		
1.70 X 8.70 X 6.31 MM	4.01 CARATS	
Carat Weight	FANCY PINK	
Color Grade	VS2	
Clarity Grade	72.5%	
Depth	71%	
Table	Thin to Medium	
Girdle		
Culet	Polished	
Polish	EXCELLENT	
Symmetry	EXCELLENT	
Fluorescence	SLIGHT	
Inscriptions(s)	LASEROWN 681	
	LG583226176	
<p>Comments: This is a very heavy Green Diamond was treated by Chemical Vapor Deposition (CVD) growth process. Indications of post-growth treatment.</p>		