



ELECTRONIC COPY

LABORATORY GROWN DIAMOND REPORT

October 31, 2022	
IGI Report Number	LG553222775
Description	LABORATORY GROWN DIAMOND
Shape and Cutting Style	CUT CORNERED RECTANGULAR MODIFIED BRILLIANT
Measurements	7.43 X 5.15 X 3.54 MM

GRADING RESULTS

Carat Weight	1.17 CARAT
Color Grade	F
Clarity Grade	SI 1

ADDITIONAL GRADING INFORMATION

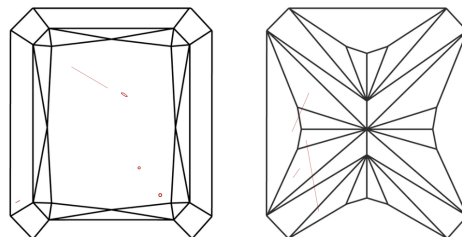
Polish	EXCELLENT
Symmetry	EXCELLENT
Fluorescence	NONE
Inscription(s)	LABGROWN 151 LG553222775

Comments: This Laboratory Grown Diamond was created by Chemical Vapor Deposition (CVD) growth process and may include post-growth treatment.
Type IIa

Diagram illustrating the proportions of a diamond-shaped house plan (Medium). The plan is defined by the following dimensions:

- Top width: 63.5%
- Left side width: 14%
- Left side depth: 51.5%
- Right side depth: 68.7%
- Bottom width: Pointed

CLARITY CHARACTERISTICS

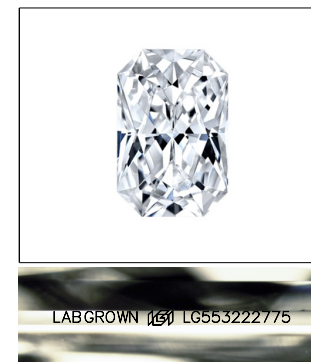


KEY TO SYMBOLS

Red symbols indicate internal characteristics.
Green symbols indicate external characteristics.

GRADING SCALES

COLOR GRADING SCALE	CL		NC		FT		VLT		LT	
	COLORLESS D-F		NEAR COLORLESS G-J		FAINT K-M		VERY LIGHT N-R		LIGHT S-Z	
CLARITY (10x) GRADING SCALE	FL	IF	VVS		VS		SI		I	
	FLAWLESS INTERNALLY		VERY VERY SLIGHTLY INCLUDED		VERY SLIGHTLY INCLUDED		SLIGHTLY INCLUDED		INCLUDED	

**LASERSCRIBESM**

Sample Image Used



© IGI 2020, International Gemological Institute

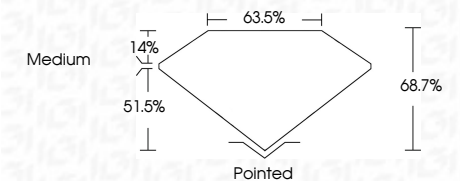
FD - 10 20

www.igi.org

LABORATORY GROWN DIAMOND REPORT

October 31, 2022	
IGI Report Number	LG553222775
Description	LABORATORY GROWN DIAMOND
Shape and Cutting Style	CUT CORNERED RECTANGULAR MODIFIED BRILLIANT
Measurements	7.43 X 5.15 X 3.54 MM

Carat Weight	1.17 CARAT
Color Grade	F
Clarity Grade	SI 1



ADDITIONAL GRADING INFORMATION

Polish	EXCELLENT
Symmetry	EXCELLENT
Fluorescence	NONE
Inscription(s)	LABGROWN (15) LG553222775

Comments: This Laboratory Grown Diamond was created by Chemical Vapor Deposition (CVD) growth process and may include post-growth treatment.
Type IIa



Date:	October 31, 2022
GJ Report No:	LGS6322775
COMMENTS:	GT CORNERED RECT. MODIFIED
Weight:	48.95 Y.F.W x 3.54 MM
Carat Weight:	1.17 CARAT
Color Grade:	F
Clarity Grade:	S I 1
Depth:	68.7%
Table:	63.5%
Girdle:	Medium
Culet:	Painted
Polish:	EXCELLENT
Symmetry:	EXCELLENT
Fluorescence:	NONE
Inscriptions(s)	LARGROWN LGF LGS6322775
Comments:	The Laboratory Grown Diamond was created by Chemical Vapor Deposition (CVD) process and may include post-growth treatment.
Type I(a)	