



ELECTRONIC COPY

LABORATORY GROWN DIAMOND REPORT

October 14, 2022
IGI Report Number LG551288660
Description LABORATORY GROWN DIAMOND
Shape and Cutting Style CUT CORNERED RECTANGULAR MODIFIED BRILLIANT
Measurements 8.83 X 6.19 X 4.21 MM

GRADING RESULTS

Carat Weight 1.93 CARAT
Color Grade H
Clarity Grade VS 1

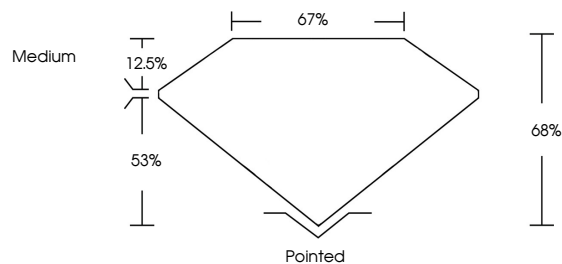
ADDITIONAL GRADING INFORMATION

Polish EXCELLENT
Symmetry EXCELLENT
Fluorescence NONE
Inscription(s) LABGROWN IGI LG551288660

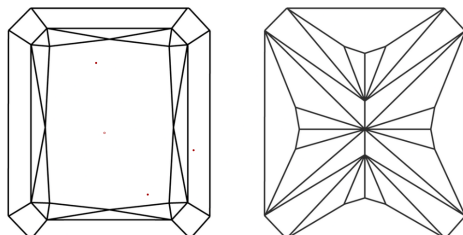
Comments: This Laboratory Grown Diamond was created by Chemical Vapor Deposition (CVD) growth process and may include post-growth treatment. Type IIa

LG551288660

PROPORTIONS



CLARITY CHARACTERISTICS



KEY TO SYMBOLS

Red symbols indicate internal characteristics.
Green symbols indicate external characteristics.

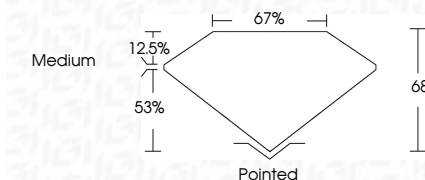
GRADING SCALES

Table with 5 columns for Color Grading Scale (CL, NC, FT, VLT, LT) and 5 columns for Clarity (10x) Grading Scale (FL, IF, VVS, VS, SI, I). Includes sub-labels like 'COLORLESS D-F', 'NEAR COLORLESS G-J', etc.

October 14, 2022
IGI Report Number LG551288660
Description LABORATORY GROWN DIAMOND
Shape and Cutting Style CUT CORNERED RECTANGULAR MODIFIED BRILLIANT
Measurements 8.83 X 6.19 X 4.21 MM

GRADING RESULTS

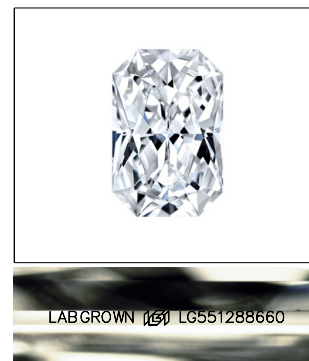
Carat Weight 1.93 CARAT
Color Grade H
Clarity Grade VS 1



ADDITIONAL GRADING INFORMATION

Polish EXCELLENT
Symmetry EXCELLENT
Fluorescence NONE
Inscription(s) LABGROWN IGI LG551288660

Comments: This Laboratory Grown Diamond was created by Chemical Vapor Deposition (CVD) growth process and may include post-growth treatment. Type IIa



LASERSCRIBE SM
Sample Image Used



Summary table of report details: Date, Report No, Description, Measurements, Grading Results (Carat, Color, Clarity), Additional Grading Information (Polish, Symmetry, Fluorescence, Inscription), and Comments.

The Laboratory Grown Diamond was created by Chemical Vapor Deposition (CVD) growth process and may include post-growth treatment. Type IIa