



INTERNATIONAL GEMOLOGICAL INSTITUTE

ELECTRONIC COPY

LABORATORY GROWN DIAMOND REPORT

LG551285838

IGI LABORATORY GROWN DIAMOND ID REPORT

October 15, 2022
IGI Report Number **LG551285838**
**CUT CORNERED RECTANGULAR
MODIFIED BRILLIANT**
6.78 X 4.82 X 3.40 MM
Carat Weight 0.94 CARAT
Color Grade E
Clarity Grade VS 1
Polish EXCELLENT
Symmetry VERY GOOD
Fluorescence NONE
Inscription(s) LABGROWN IGI
LG551285838

Comments: This Laboratory Grown Diamond was created by Chemical Vapor Deposition (CVD) growth process and may include post-growth treatment.
Type IIa

LABORATORY GROWN DIAMOND REPORT

IGI LABORATORY GROWN DIAMOND IDENTIFICATION REPORT

October 15, 2022
IGI Report Number LG551285838
Description LABORATORY GROWN DIAMOND
Shape and Cutting Style CUT CORNERED RECTANGULAR MODIFIED
BRILLIANT
Measurements 6.78 X 4.82 X 3.40 MM

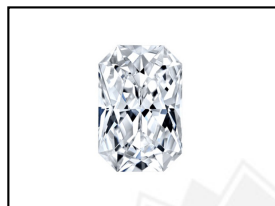
GRADING RESULTS

Carat Weight 0.94 CARAT
Color Grade E
Clarity Grade VS 1

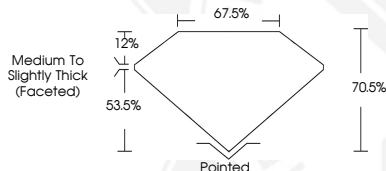
ADDITIONAL GRADING INFORMATION

Polish EXCELLENT
Symmetry VERY GOOD
Fluorescence NONE
Inscription(s) LABGROWN IGI LG551285838

Comments: This Laboratory Grown Diamond was created by Chemical Vapor Deposition (CVD) growth process and may include post-growth treatment.
Type IIa



LASERSCRIBE SM
Sample Images Used



IGI LABORATORY GROWN DIAMOND ID REPORT

October 15, 2022
IGI Report Number **LG551285838**
**CUT CORNERED RECTANGULAR
MODIFIED BRILLIANT**
6.78 X 4.82 X 3.40 MM
Carat Weight 0.94 CARAT
Color Grade E
Clarity Grade VS 1
Polish EXCELLENT
Symmetry VERY GOOD
Fluorescence NONE
Inscription(s) LABGROWN IGI
LG551285838

Comments: This Laboratory Grown Diamond was created by Chemical Vapor Deposition (CVD) growth process and may include post-growth treatment.
Type IIa



THIS DOCUMENT WAS PRODUCED WITH THE FOLLOWING SECURITY MEASURES: SPECIAL DOCUMENT PAPER, INK SCREENS, WATERMARK, BACKGROUND DESIGN, HOLOGRAM AND OTHER SECURITY FEATURES NOT LISTED AND DO EXCEED DOCUMENT SECURITY INDUSTRY GUIDELINES.

For terms & conditions and to verify this report, please visit www.igi.org