



# INTERNATIONAL GEMOLOGICAL INSTITUTE

ELECTRONIC COPY

## LABORATORY GROWN DIAMOND REPORT

LG551280985

### LABORATORY GROWN DIAMOND REPORT

#### IGI LABORATORY GROWN DIAMOND IDENTIFICATION REPORT

December 20, 2022

IGI Report Number LG551280985

Description LABORATORY GROWN DIAMOND

Shape and Cutting Style CUT CORNERED RECTANGULAR MODIFIED  
BRILLIANT

Measurements 6.22 X 4.40 X 3.08 MM

#### GRADING RESULTS

Carat Weight 0.73 CARAT

Color Grade F

Clarity Grade VS 2

#### ADDITIONAL GRADING INFORMATION

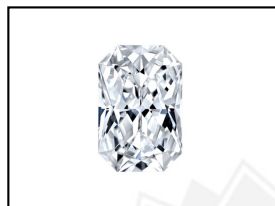
Polish EXCELLENT

Symmetry EXCELLENT

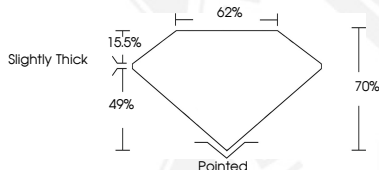
Fluorescence NONE

Inscription(s) LABGROWN IGI LG551280985

Comments: This Laboratory Grown Diamond was created by  
Chemical Vapor Deposition (CVD) growth process and may include  
post-growth treatment.  
Type IIa



**LASERSCRIBE** SM  
Sample Images Used



#### IGI LABORATORY GROWN DIAMOND ID REPORT

December 20, 2022

IGI Report Number LG551280985

CUT CORNERED RECTANGULAR  
MODIFIED BRILLIANT

6.22 X 4.40 X 3.08 MM

Carat Weight 0.73 CARAT

Color Grade F

Clarity Grade VS 2

Polish EXCELLENT

Symmetry EXCELLENT

Fluorescence NONE

Inscription(s) LABGROWN IGI  
LG551280985

Comments: This Laboratory Grown  
Diamond was created by  
Chemical Vapor Deposition (CVD)  
growth process and may include  
post-growth treatment.  
Type IIa

#### IGI LABORATORY GROWN DIAMOND ID REPORT

December 20, 2022

IGI Report Number LG551280985

CUT CORNERED RECTANGULAR  
MODIFIED BRILLIANT

6.22 X 4.40 X 3.08 MM

Carat Weight 0.73 CARAT

Color Grade F

Clarity Grade VS 2

Polish EXCELLENT

Symmetry EXCELLENT

Fluorescence NONE

Inscription(s) LABGROWN IGI  
LG551280985

Comments: This Laboratory Grown  
Diamond was created by  
Chemical Vapor Deposition (CVD)  
growth process and may include  
post-growth treatment.  
Type IIa



THIS DOCUMENT WAS PRODUCED WITH THE FOLLOWING SECURITY MEASURES: SPECIAL DOCUMENT PAPER, INK SCREENS, WATERMARK, BACKGROUND DESIGN, HOLOGRAM AND OTHER SECURITY FEATURES NOT LISTED AND DO EXCEED DOCUMENT SECURITY INDUSTRY GUIDELINES.

For terms & conditions and to verify this report, please visit [www.igi.org](http://www.igi.org)