



**ELECTRONIC COPY**

## LABORATORY GROWN DIAMOND REPORT

October 13, 2022	
IGI Report Number	LG551273247
Description	LABORATORY GROWN DIAMOND
Shape and Cutting Style	CUT CORNERED RECTANGULAR MODIFIED BRILLIANT
Measurements	7.63 X 5.39 X 3.70 MM

## GRADING RESULTS

Carat Weight	1.35 CARAT
Color Grade	F
Clarity Grade	VS 2

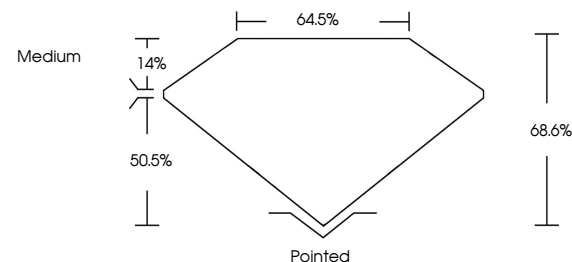
### ADDITIONAL GRADING INFORMATION

Polish	EXCELLENT
Symmetry	EXCELLENT
Fluorescence	NONE

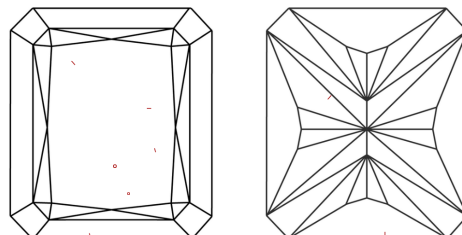
Inscription(s) **LABGROWN  LG551273247**  
 Comments: This Laboratory Grown Diamond was created by Chemical Vapor Deposition (CVD) growth process and may include post-growth treatment.  
 Type IIa

LG551273247

## PROPORTIONS



## CLARITY CHARACTERISTICS

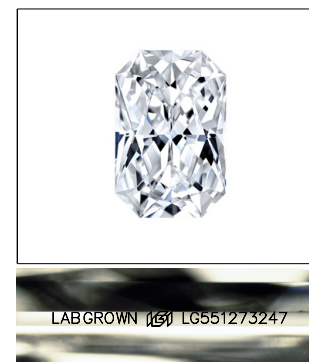


## KEY TO SYMBOLS

Red symbols indicate internal characteristics.  
Green symbols indicate external characteristics.

## GRADING SCALES

COLOR GRADING SCALE	CL		NC	FT	VLT	LT
	COLORLESS D-F		NEAR COLORLESS G-J	FAINT K-M	VERY LIGHT N-R	LIGHT S-Z
CLARITY (10x) GRADING SCALE	FL	IF	VVS	VS	SI	I
	FLAWLESS INTERNALLY FLAWLESS		VERY VERY SLIGHTLY INCLUDED	VERY SLIGHTLY INCLUDED	SLIGHTLY INCLUDED	INCLUDED

LASERSCRIBE<sup>SM</sup>

Sample Image Used



© IGI 2020, International Gemological Institute

FD - 10 20

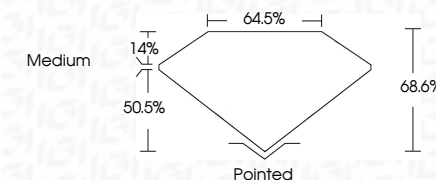
**www.igi.org**

## LABORATORY GROWN DIAMOND REPORT

October 13, 2022	
IGI Report Number	LG551273247
Description	LABORATORY GROWN DIAMOND
Shape and Cutting Style	CUT CORNERED RECTANGULAR MODIFIED BRILLIANT
Measurements	7.63 X 5.39 X 3.70 MM

## GRADING RESULTS

Carat Weight	1.35 CARAT
Color Grade	F
Clarity Grade	VS 2



### ADDITIONAL GRADING INFORMATION

Polish	EXCELLENT
Symmetry	EXCELLENT
Fluorescence	NONE
Inscription(s)	LABGROWN (15) LG551273247

Comments: This Laboratory Grown Diamond was created by Chemical Vapor Deposition (CVD) growth process and may include post-growth treatment.  
Type IIa



October 13, 2022	GI Report No. LG551273247	1.35 CARAT
2 CUT CONVERTED RECT. MODIFIED		F
3 4.53 X 5.59 X 3.70 MM		VS 2
		68.6%
		64.5%
		Medium
		Pointed
		EXCELLENT
		EXCELLENT
		NONE
		LABGROWN (GSI)
		LG551273247
	Comments:	
	This Laboratory Grown Diamond was	
	grown by the Chemical Vapor Deposition	
	(CVD) growth process and may include	
	post-growth treatment.	
	Type IIA	