



ELECTRONIC COPY

LABORATORY GROWN DIAMOND REPORT

October 12, 2022	
IGI Report Number	LG551272570
Description	LABORATORY GROWN DIAMOND
Shape and Cutting Style	ROUND BRILLIANT
Measurements	7.99 - 8.05 X 4.94 MM

GRADING RESULTS

Carat Weight	1.94 CARAT
Color Grade	I
Clarity Grade	VS 2
Cut Grade	IDEAL

ADDITIONAL GRADING INFORMATION

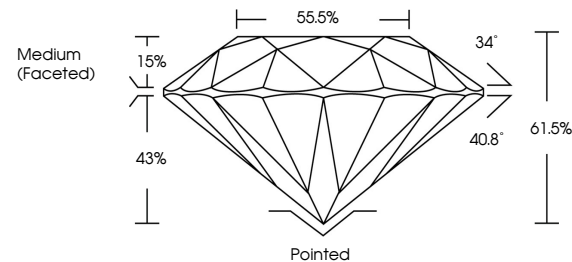
Polish	EXCELLENT
Symmetry	EXCELLENT
Fluorescence	NONE

Inscription(s) LABGROWN  LG551272570

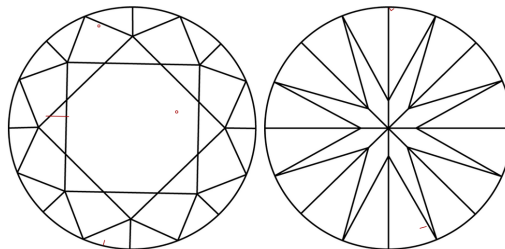
Comments: This Laboratory Grown Diamond was created by Chemical Vapor Deposition (CVD) growth process and may include post-growth treatment.
Type IIa

LG551272570

PROPORTIONS



CLARITY CHARACTERISTICS

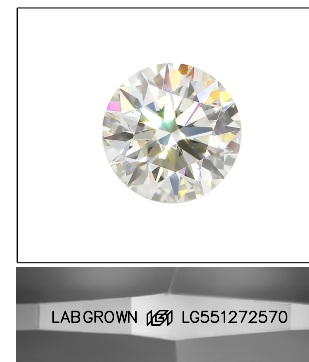


KEY TO SYMBOLS

Red symbols indicate internal characteristics.
Green symbols indicate external characteristics.

GRADING SCALES

COLOR GRADING SCALE	CL		NC		FT		VLT		LT	
	COLORLESS D-F		NEAR COLORLESS G-J		FAINT K-M		VERY LIGHT N-R		LIGHT S-Z	
CLARITY (10x) GRADING SCALE	FL IF		VVS		VS		SI		I	
	FLAWLESS INTERNALLY FLAWLESS		VERY VERY SLIGHTLY INCLUDED		VERY SLIGHTLY INCLUDED		SLIGHTLY INCLUDED		INCLUDED	

LASERSCRIBESM

Sample Image Used

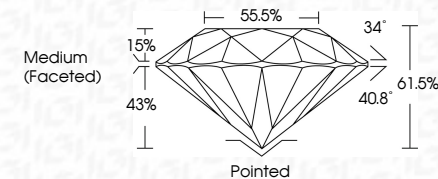


© IGI 2020, International Gemological Institute

FD - 10 20

LABORATORY GROWN DIAMOND REPORT

October 12, 2022	
IGI Report Number	LG551272570
Description	LABORATORY GROWN DIAMOND
Shape and Cutting Style	ROUND BRILLIANT
Measurements	7.99 - 8.05 X 4.94 MM
GRADING RESULTS	
Carat Weight	1.94 CARAT
Color Grade	I
Clarity Grade	VS 2
Cut Grade	IDEAL



ADDITIONAL GRADING INFORMATION

Polish	EXCELLENT
Symmetry	EXCELLENT
Fluorescence	NONE
Inscription(s)	LABGROWN (151) LG551272570

Comments: This Laboratory Grown Diamond was created by Chemical Vapor Deposition (CVD) growth process and may include post-growth treatment.
Type IIa



October 12, 2022	GI Report No. LGS551272570	1.04 CARAT
SOUND BRILLIANT	Color Weight 4.94 MM	Vs 2
99 - 99	Color Grade I	ID54L
		6.15%
		55.5%
		Medium (Faceted)
		Polished
		EXCELLENT
		EXCELLENT
		NONE
		LARGE/OWN (GRI)
		LGS551272570
		Comments:
		The Laboratory Grown Diamond was
		created by chemical vapor deposition
		(CVD) and may include
		post-growth treatment.
		Type Ila

This Laboratory Grown Diamond was created by Chemical Vapor Deposition (CVD) growth process and may include post-growth treatment.