



ELECTRONIC COPY

LABORATORY GROWN DIAMOND REPORT

October 17, 2022	
IGI Report Number	LG551212749
Description	LABORATORY GROWN DIAMOND
Shape and Cutting Style	CUT CORNERED RECTANGULAR MODIFIED BRILLIANT
Measurements	8.85 X 6.28 X 4.14 MM

GRADING RESULTS

Carat Weight	1.94 CARAT
Color Grade	F
Clarity Grade	VVS 2

ADDITIONAL GRADING INFORMATION

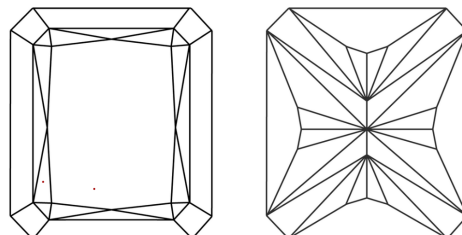
Polish	EXCELLENT
Symmetry	EXCELLENT
Fluorescence	NONE
Inscription(s)	LABGROWN 151 LG551212749

Comments: This Laboratory Grown Diamond was created by Chemical Vapor Deposition (CVD) growth process and may include post-growth treatment.
Type IIa

Diagram illustrating the proportions of a diamond-shaped object, labeled LG551212749. The object is a diamond shape with a pointed bottom. The proportions are defined by the following dimensions:

- Top Width:** 65.5%
- Bottom Width:** 65.9%
- Left Side Proportions:**
 - Top segment: 14%
 - Bottom segment: 49%
- Right Side Proportions:** 65.9%
- Labels:**
 - Medium:** Located on the left side, corresponding to the 14% segment.
 - Pointed:** Located at the bottom, corresponding to the pointed tip.

CLARITY CHARACTERISTICS

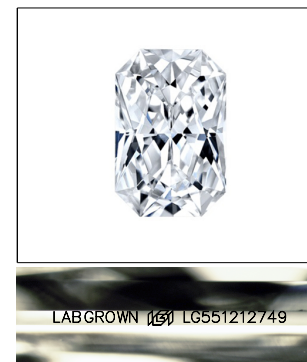


KEY TO SYMBOLS

Red symbols indicate internal characteristics.
Green symbols indicate external characteristics.

GRADING SCALES

COLOR GRADING SCALE	CL		NC		FT		VLT		LT	
	COLORLESS D-F		NEAR COLORLESS G-J		FAINT K-M		VERY LIGHT N-R		LIGHT S-Z	
CLARITY (10x) GRADING SCALE	FL	IF	VVS		VS		SI		I	
	FLAWLESS INTERNALLY FLAWLESS		VERY VERY SLIGHTLY INCLUDED		VERY SLIGHTLY INCLUDED		SLIGHTLY INCLUDED		INCLUDED	

LASERSCRIBESM

Sample Image Used



© IGI 2020, International Gemological Institute

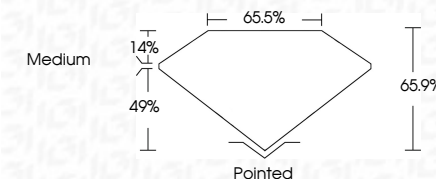
FD - 10 20

www.igi.org

LABORATORY GROWN DIAMOND REPORT

October 17, 2022	
IGI Report Number	LG551212749
Description	LABORATORY GROWN DIAMOND
Shape and Cutting Style	CUT CORNERED RECTANGULAR MODIFIED BRILLIANT
Measurements	8.85 X 6.28 X 4.14 MM

GRADING RESULTS	
Carat Weight	1.94 CARAT
Color Grade	F
Clarity Grade	VVS 2



ADDITIONAL GRADING INFORMATION

Polish	EXCELLENT
Symmetry	EXCELLENT
Fluorescence	NONE
Inscription(s)	LABGROWN (15) LG551212749

Comments: This Laboratory Grown Diamond was created by Chemical Vapor Deposition (CVD) growth process and may include post-growth treatment.
Type IIa



October 17, 2022	Color Grade	Carat Weight	1.94 CARAT
G/ Report No. LG551212749	Cutty Grade	VVS 2	
CU COVERED BEC. MODIFIED	Depth	65.9%	
1.85 X 3.26 X 1.14 MM	Table	65.5%	
	Girdle	Medium	
	Culet	Pointed	
	Polish	EXCELLENT	
	Symmetry	EXCELLENT	
	Fluorescence	NONE	
	Inscription(s)	LABGROWN 1691 LG551212749	
	Comments:		
			This Laboratory Grown Diamond was certified by the Gemological Institute of America (GIA) as a Type IIa. The GIA post-growth process and may include type IIa