



**ELECTRONIC COPY**

**LABORATORY GROWN DIAMOND REPORT**

LG551212051

Report verification at [igi.org](http://igi.org)

**LABORATORY GROWN  
DIAMOND REPORT**

**LABORATORY GROWN DIAMOND REPORT**

**LABORATORY GROWN DIAMOND REPORT**

March 26, 2024  
 IGI Report Number **LG551212051**  
 Description **LABORATORY GROWN  
DIAMOND**  
 Shape and Cutting Style **CUSHION MODIFIED BRILLIANT**  
 Measurements **9.06 X 8.71 X 5.99 MM**

**GRADING RESULTS**

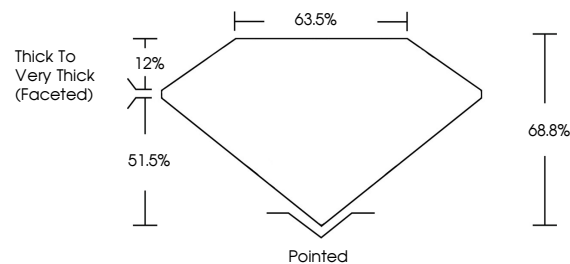
Carat Weight **4.01 CARATS**  
 Color Grade **FANCY INTENSE PINK**  
 Clarity Grade **VVS 2**

**ADDITIONAL GRADING INFORMATION**

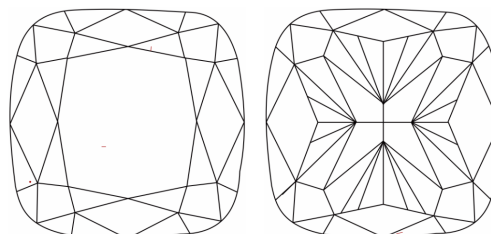
Polish **EXCELLENT**  
 Symmetry **EXCELLENT**  
 Fluorescence **SLIGHT**  
 Inscription(s) **LABGROWN (IGI) LG551212051**

Comments: This Laboratory Grown Diamond was created by Chemical Vapor Deposition (CVD) growth process.  
 Indications of post-growth treatment.

**PROPORTIONS**



**CLARITY CHARACTERISTICS**



**KEY TO SYMBOLS**

Red symbols indicate internal characteristics.  
 Green symbols indicate external characteristics.

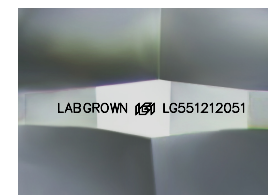
**GRADING SCALES**

**CLARITY**

IF	VVS <sup>1-2</sup>	VS <sup>1-2</sup>	SI <sup>1-2</sup>	I <sup>1-3</sup>
Internally Flawless	Very Very Slightly Included	Very Slightly Included	Slightly Included	Included

**COLOR**

D	E	F	G	H	I	J	Faint	Very Light	Light
Light Tint	Fancy Light	Fancy	Fancy Intense	Fancy Vivid					

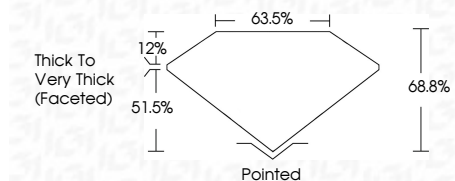


Sample Image Used

March 26, 2024  
 IGI Report Number **LG551212051**  
 Description **LABORATORY GROWN  
DIAMOND**  
 Shape and Cutting Style **CUSHION MODIFIED  
BRILLIANT**  
 Measurements **9.06 X 8.71 X 5.99 MM**

**GRADING RESULTS**

Carat Weight **4.01 CARATS**  
 Color Grade **FANCY INTENSE PINK**  
 Clarity Grade **VVS 2**



**ADDITIONAL GRADING INFORMATION**

Polish **EXCELLENT**  
 Symmetry **EXCELLENT**  
 Fluorescence **SLIGHT**  
 Inscription(s) **LABGROWN (IGI) LG551212051**  
 Comments: This Laboratory Grown Diamond was created by Chemical Vapor Deposition (CVD) growth process.  
 Indications of post-growth treatment.



**IGI**

March 26, 2024  
 IGI Report No LG551212051  
**CUSHION MODIFIED BRILLIANT**  
 9.06 X 8.71 X 5.99 MM  
 4.01 CARATS  
 FANCY INTENSE PINK  
 VVS 2  
 68.8%  
 63.5%  
 Thick to Very Thick (Faceted)  
 Pointed  
 EXCELLENT  
 EXCELLENT  
 SLIGHT  
 LABGROWN (IGI) LG551212051

Comments: This Laboratory Grown Diamond was created by Chemical Vapor Deposition (CVD) growth process.  
 Indications of post-growth treatment.

