



ELECTRONIC COPY

LABORATORY GROWN DIAMOND REPORT

October 10, 2022
IGI Report Number LG550258037
Description LABORATORY GROWN DIAMOND
Shape and Cutting Style PRINCESS CUT
Measurements 10.57 X 10.49 X 7.57 MM

GRADING RESULTS

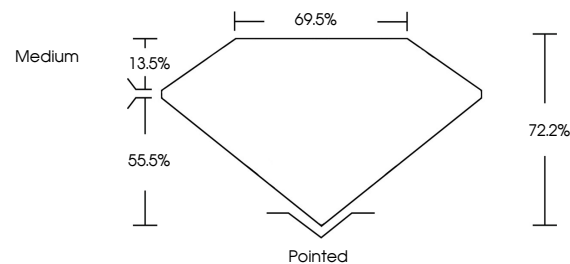
Carat Weight 7.41 CARATS
Color Grade G
Clarity Grade VS 1

ADDITIONAL GRADING INFORMATION

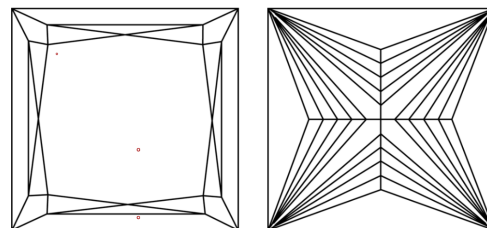
Polish EXCELLENT
Symmetry EXCELLENT
Fluorescence NONE
Inscription(s) LABGROWN IGI LG550258037
Comments: This Laboratory Grown Diamond was created by Chemical Vapor Deposition (CVD) growth process and may include post-growth treatment. Type IIa

LG550258037

PROPORTIONS



CLARITY CHARACTERISTICS

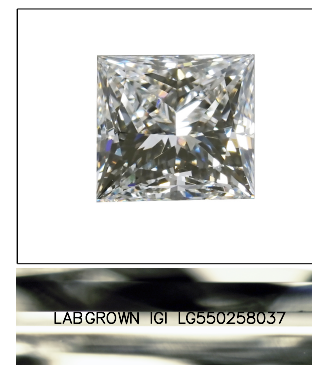


KEY TO SYMBOLS

Red symbols indicate internal characteristics.
Green symbols indicate external characteristics.

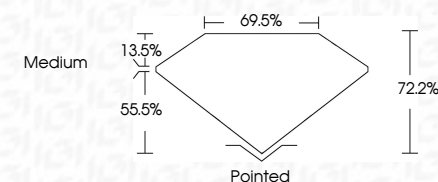
GRADING SCALES

Table with 2 rows: COLOR GRADING SCALE (CL, NC, FT, VLT, LT) and CLARITY (10x) GRADING SCALE (FL, IF, VVS, VS, SI, I).



LASERSCRIBE SM
Sample Image Used

October 10, 2022
IGI Report Number LG550258037
Description LABORATORY GROWN DIAMOND
Shape and Cutting Style PRINCESS CUT
Measurements 10.57 X 10.49 X 7.57 MM
GRADING RESULTS
Carat Weight 7.41 CARATS
Color Grade G
Clarity Grade VS 1



ADDITIONAL GRADING INFORMATION

Polish EXCELLENT
Symmetry EXCELLENT
Fluorescence NONE
Inscription(s) LABGROWN IGI LG550258037
Comments: This Laboratory Grown Diamond was created by Chemical Vapor Deposition (CVD) growth process and may include post-growth treatment. Type IIa



October 10, 2022
IGI Report No. LG550258037
PRINCESS CUT
10.57 X 10.49 X 7.57 MM
Carat Weight 7.41 CARATS
Color Grade G
Clarity Grade VS 1
Depth 72.2%
Table 69.5%
Girdle Medium
Culet Pointed
Polish EXCELLENT
Symmetry EXCELLENT
Fluorescence NONE
Inscription(s) LABGROWN IGI LG550258037
Comments: This Laboratory Grown Diamond was created by Chemical Vapor Deposition (CVD) growth process and may include post-growth treatment. Type IIa