



**INTERNATIONAL  
GEMOLOGICAL  
INSTITUTE**

**ELECTRONIC COPY**

**LABORATORY GROWN  
DIAMOND REPORT**

**IGI LABORATORY GROWN  
DIAMOND ID REPORT**

October 18, 2022  
IGI Report Number **LG550249701**  
**SQUARE CUSHION BRILLIANT**  
**4.69 X 4.64 X 3.27 MM**  
Carat Weight 0.57 CARAT  
Color Grade FANCY VIVID PINK  
Clarity Grade VS 1  
Polish EXCELLENT  
Symmetry EXCELLENT  
Fluorescence SLIGHT  
Inscription(s) LABGROWN IGI  
LG550249701

Comments: This Laboratory Grown Diamond was created by Chemical Vapor Deposition (CVD) growth process. Indications of post-growth treatment.

**LABORATORY GROWN DIAMOND REPORT**

**IGI LABORATORY GROWN DIAMOND IDENTIFICATION REPORT**

October 18, 2022  
IGI Report Number LG550249701  
Description LABORATORY GROWN DIAMOND  
Shape and Cutting Style SQUARE CUSHION BRILLIANT  
Measurements 4.69 X 4.64 X 3.27 MM

**GRADING RESULTS**

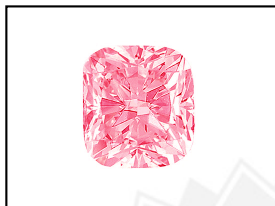
Carat Weight 0.57 CARAT  
Color Grade FANCY VIVID PINK  
Clarity Grade VS 1

**ADDITIONAL GRADING INFORMATION**

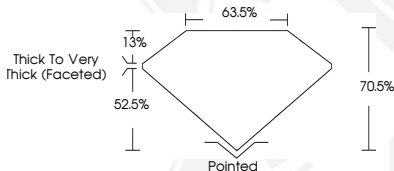
Polish EXCELLENT  
Symmetry EXCELLENT  
Fluorescence SLIGHT  
Inscription(s) LABGROWN IGI LG550249701

Comments: This Laboratory Grown Diamond was created by Chemical Vapor Deposition (CVD) growth process. Indications of post-growth treatment.

**LG550249701**



**LASERSCRIBE<sup>SM</sup>**  
Sample Images Used



**IGI LABORATORY GROWN  
DIAMOND ID REPORT**

October 18, 2022  
IGI Report Number **LG550249701**  
**SQUARE CUSHION BRILLIANT**  
**4.69 X 4.64 X 3.27 MM**  
Carat Weight 0.57 CARAT  
Color Grade FANCY VIVID PINK  
Clarity Grade VS 1  
Polish EXCELLENT  
Symmetry EXCELLENT  
Fluorescence SLIGHT  
Inscription(s) LABGROWN IGI  
LG550249701

Comments: This Laboratory Grown Diamond was created by Chemical Vapor Deposition (CVD) growth process. Indications of post-growth treatment.

THIS DOCUMENT WAS PRODUCED WITH THE FOLLOWING SECURITY MEASURES: SPECIAL DOCUMENT PAPER, INK SCREENS, WATERMARK, BACKGROUND DESIGN, HOLOGRAM AND OTHER SECURITY FEATURES NOT LISTED AND DO EXCEED DOCUMENT SECURITY INDUSTRY GUIDELINES.

For terms & conditions and to verify this report, please visit [www.igi.org](http://www.igi.org)