



ELECTRONIC COPY

LABORATORY GROWN DIAMOND REPORT

| | |
|-------------------------|-----------------------------|
| October 4, 2022 | |
| IGI Report Number | LG550227845 |
| Description | LABORATORY GROWN DIAMOND |
| Shape and Cutting Style | ROUND BRILLIANT |
| Measurements | 9.70 - 9.74 X 6.06 MM |

GRADING RESULTS

| | |
|---------------|-------------|
| Carat Weight | 3.53 CARATS |
| Color Grade | E |
| Clarity Grade | VS 2 |
| Cut Grade | IDEAL |

ADDITIONAL GRADING INFORMATION

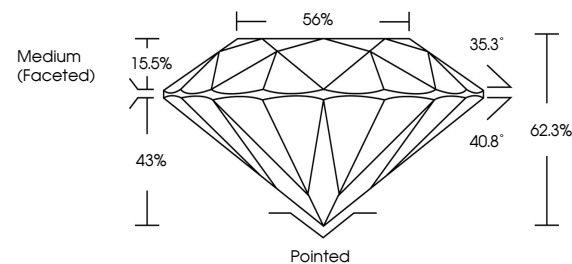
| | |
|--------------|-----------|
| Polish | EXCELLENT |
| Symmetry | EXCELLENT |
| Fluorescence | NONE |

Inscription(s) LABGROWN 16 LG550227845

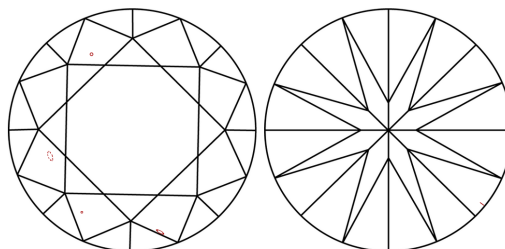
Comments: This Laboratory Grown Diamond was created by Chemical Vapor Deposition (CVD) growth process and may include post-growth treatment.
Type IIa

LG550227845

PROPORTIONS



CLARITY CHARACTERISTICS

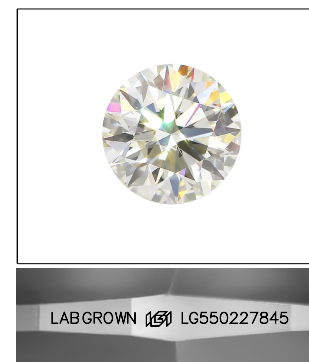


KEY TO SYMBOLS

Red symbols indicate internal characteristics.
Green symbols indicate external characteristics.

GRADING SCALES

| | | | | | | |
|-----------------------------|------------------------------|----|-----------------------------|------------------------|-------------------|-----------|
| COLOR GRADING SCALE | CL | | NC | FT | VLT | LT |
| | COLORLESS D-F | | NEAR COLORLESS G-J | FAINT K-M | VERY LIGHT N-R | LIGHT S-Z |
| CLARITY (10x) GRADING SCALE | FL | IF | VVS | VS | SI | I |
| | FLAWLESS INTERNALLY FLAWLESS | | VERY VERY SLIGHTLY INCLUDED | VERY SLIGHTLY INCLUDED | SLIGHTLY INCLUDED | INCLUDED |

LASERSCRIBESM

Sample Image Used

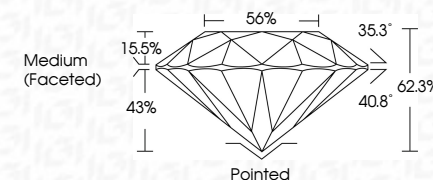


© IGI 2020, International Gemological Institute

FD - 10 20

LABORATORY GROWN DIAMOND REPORT

| | |
|-------------------------|-----------------------------|
| October 4, 2022 | |
| IGI Report Number | LG550227845 |
| Description | LABORATORY GROWN DIAMOND |
| Shape and Cutting Style | ROUND BRILLIANT |
| Measurements | 9.70 - 9.74 X 6.06 MM |
| GRADING RESULTS | |
| Carat Weight | 3.53 CARATS |
| Color Grade | E |
| Clarity Grade | VS 2 |
| Cut Grade | IDEAL |



ADDITIONAL GRADING INFORMATION

| | |
|----------------|---------------------------|
| Polish | EXCELLENT |
| Symmetry | EXCELLENT |
| Fluorescence | NONE |
| Inscription(s) | LABGROWN (16) LG550227845 |

Comments: This Laboratory Grown Diamond was created by Chemical Vapor Deposition (CVD) growth process and may include post-growth treatment.
Type IIa



| | | |
|---|---------------------------|--|
| October 4, 2022 | G/ Report No: LG550227845 | |
| ROUND BRILLIANT | 20.00 CARATS | |
| 20.0 X 9.74 X 4.05 MM | VS 2 | |
| Color Grade | IDEAL | |
| Carat Weight | 62.3% | |
| | 56% | |
| | Medium Facet(s) | |
| | Pointed | |
| | EXCELLENT | |
| | EXCELLENT | |
| | NONE | |
| | LASER-GROWN | |
| | LG550227845 | |
| <p>Comments: This Laboratory Grown Diamond was created by Chemical Vapor Deposition (CVD) growth process and may include post-growth treatment.</p> | | |

Comments:
This Laboratory Grown Diamond was created by Chemical Vapor Deposition (CVD) growth process and may include post-growth treatment.