



LABORATORY GROWN DIAMOND REPORT

LG549218390

**IGI LABORATORY GROWN
DIAMOND ID REPORT**

October 25, 2022
IGI Report Number **LG549218390**
**CUT CORNERED RECTANGULAR
MODIFIED BRILLIANT**
7.81 X 5.68 X 3.95 MM
Carat Weight 1.59 CARAT
Color Grade FANCY VIVID YELLOW
Clarity Grade VS 1
Polish EXCELLENT
Symmetry VERY GOOD
Fluorescence NONE
Inscription(s) LABGROWN IGI
LG549218390

Comments: As Grown - No indication of post-growth treatment.
This Laboratory Grown Diamond was created by High Pressure High Temperature (HPHT) growth process.

LABORATORY GROWN DIAMOND REPORT

IGI LABORATORY GROWN DIAMOND IDENTIFICATION REPORT

October 25, 2022
IGI Report Number LG549218390
Description LABORATORY GROWN DIAMOND
Shape and Cutting Style CUT CORNERED RECTANGULAR MODIFIED BRILLIANT
Measurements 7.81 X 5.68 X 3.95 MM

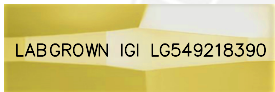
GRADING RESULTS

Carat Weight 1.59 CARAT
Color Grade FANCY VIVID YELLOW
Clarity Grade VS 1

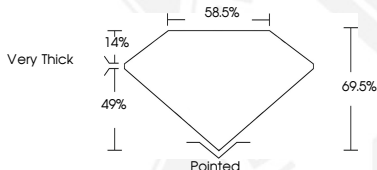
ADDITIONAL GRADING INFORMATION

Polish EXCELLENT
Symmetry VERY GOOD
Fluorescence NONE
Inscription(s) LABGROWN IGI LG549218390

Comments: As Grown - No indication of post-growth treatment.
This Laboratory Grown Diamond was created by High Pressure High Temperature (HPHT) growth process.



LASERSCRIBESM
Sample Images Used



**IGI LABORATORY GROWN
DIAMOND ID REPORT**

October 25, 2022
IGI Report Number **LG549218390**
**CUT CORNERED RECTANGULAR
MODIFIED BRILLIANT**
7.81 X 5.68 X 3.95 MM
Carat Weight 1.59 CARAT
Color Grade FANCY VIVID YELLOW
Clarity Grade VS 1
Polish EXCELLENT
Symmetry VERY GOOD
Fluorescence NONE
Inscription(s) LABGROWN IGI
LG549218390

Comments: As Grown - No indication of post-growth treatment.
This Laboratory Grown Diamond was created by High Pressure High Temperature (HPHT) growth process.

THIS DOCUMENT WAS PRODUCED WITH THE FOLLOWING SECURITY MEASURES: SPECIAL DOCUMENT PAPER, INK SCREENS, WATERMARK, BACKGROUND DESIGN, HOLOGRAM AND OTHER SECURITY FEATURES NOT LISTED AND DO EXCEED DOCUMENT SECURITY INDUSTRY GUIDELINES.