



ELECTRONIC COPY

LABORATORY GROWN DIAMOND REPORT

October 4, 2022

IGI Report Number **LG549216019**

Description **LABORATORY GROWN
DIAMOND**

Shape and Cutting Style **OVAL BRILLIANT**

Measurements 14.69 X 10.36 X 6.52 MM

GRADING RESULTS

Carat Weight **6.26 CARATS**

Color Grade F

Clarity Grade VS 2

ADDITIONAL GRADING INFORMATION

Polish **EXCELLENT**

Symmetry **EXCELLENT**

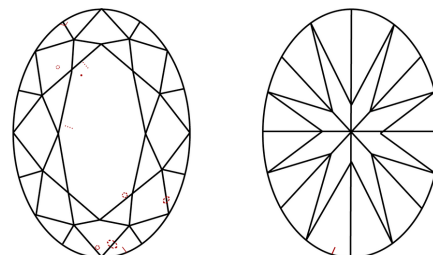
Fluorescence **NONE**Inscription(s) LABGROWN LG549216019

Comments: This Laboratory Grown Diamond was created by Chemical Vapor Deposition (CVD) growth process and may include post-growth treatment. Type IIa

Diagram illustrating the proportions of a diamond-shaped stone (LG549216019). The proportions are defined by percentages and descriptive terms:

- Top facet: 14%
- Bottom facet: 44.5%
- Width: 60.5%
- Height: 62.9%
- Bottom point: Pointed

CLARITY CHARACTERISTICS

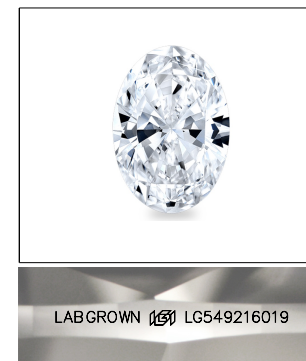


KEY TO SYMBOLS

Red symbols indicate internal characteristics.
Green symbols indicate external characteristics.

GRADING SCALES

COLOR GRADING SCALE	CL		NC		FT		VLT		LT	
	COLORLESS D-F		NEAR COLORLESS G-J		FAINT K-M		VERY LIGHT N-R		LIGHT S-Z	
CLARITY (10x) GRADING SCALE	FL	IF	VVS		VS		SI		I	
	FLAWLESS INTERNALLY FLAWLESS		VERY VERY SLIGHTLY INCLUDED		VERY SLIGHTLY INCLUDED		SLIGHTLY INCLUDED		INCLUDED	

LASERSCRIBESM

Sample Image Used



© IGI 2020, International Gemological Institute

FD - 10 20

LABORATORY GROWN DIAMOND REPORT

October 4, 2022	
IGI Report Number	LG549216019
Description	LABORATORY GROWN

Shape and Cutting Style **OVAL BRILLIANT**

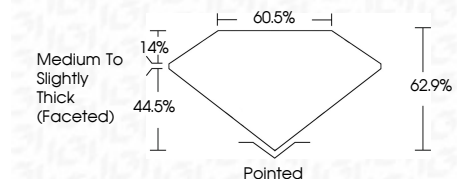
Measurements 14.69 X 10.36 X 6.52 MM

GRADING RESULTS

Carat Weight **6.26 CARATS**

Color Grade F

Clarity Grade VS 2



ADDITIONAL GRADING INFORMATION

Polish **EXCELLENT**Symmetry **EXCELLENT**Fluorescence **NONE**

Inscription(s) **LABGROWN 1131 LG549216019**

Comments: This Laboratory Grown Diamond was created by Chemical Vapor Deposition (CVD) growth process and may include post-growth treatment.
Type IIa



October 4, 2022	GI Report No. GS69216019	
Color Weight	14.69 g (0.52 MM)	6.26 CUBATS
Color Grade		F
Clarity Grade		VS 2
Depth		62.5%
Table		60.5%
Girdle		Medium to Slightly Thick (Faceted)
Culet		Pointed
Polish		EXCELLENT
Symmetry		EXCELLENT
Fluorescence		NONE
Inscriptions(s)		LARGEDOWN US GS69216019

Comments:
 This Chemically Grown Diamond was created by Chemical Vapor Deposition (CVD) growth process and may include post-growth treatment.
 Type I_{II}