



ELECTRONIC COPY

LABORATORY GROWN DIAMOND REPORT

October 3, 2022
IGI Report Number LG547268265
Description LABORATORY GROWN DIAMOND
Shape and Cutting Style OVAL ROSE CUT
Measurements 11.62 X 9.11 X 2.87 MM

GRADING RESULTS

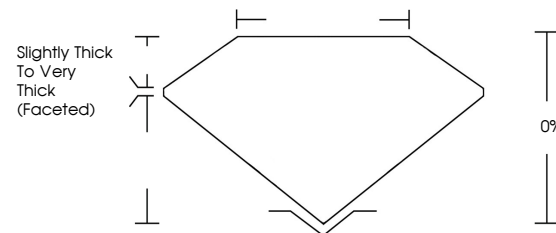
Carat Weight 3.21 CARATS
Color Grade H
Clarity Grade VS 2

ADDITIONAL GRADING INFORMATION

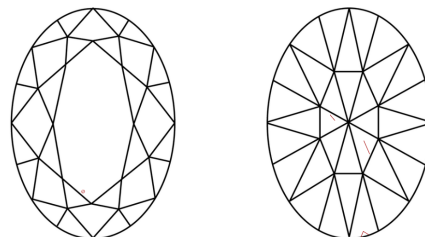
Polish EXCELLENT
Symmetry EXCELLENT
Fluorescence NONE
Inscription(s) LABGROWN IGI LG547268265
Comments: This Laboratory Grown Diamond was created by Chemical Vapor Deposition (CVD) growth process and may include post-growth treatment. Type IIa

LG547268265

PROPORTIONS



CLARITY CHARACTERISTICS

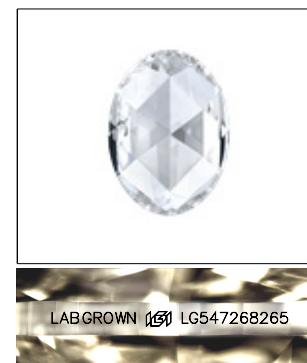


KEY TO SYMBOLS

Red symbols indicate internal characteristics.
Green symbols indicate external characteristics.

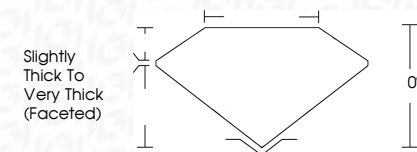
GRADING SCALES

Table with 5 columns for Color Grading Scale (CL, NC, FT, VLT, LT) and Clarity (10x) Grading Scale (FL, IF, VVS, VS, SI, I).



LASERSCRIBE SM
Sample Image Used

October 3, 2022
IGI Report Number LG547268265
Description LABORATORY GROWN DIAMOND
Shape and Cutting Style OVAL ROSE CUT
Measurements 11.62 X 9.11 X 2.87 MM
GRADING RESULTS
Carat Weight 3.21 CARATS
Color Grade H
Clarity Grade VS 2



ADDITIONAL GRADING INFORMATION

Polish EXCELLENT
Symmetry EXCELLENT
Fluorescence NONE
Inscription(s) LABGROWN IGI LG547268265
Comments: This Laboratory Grown Diamond was created by Chemical Vapor Deposition (CVD) growth process and may include post-growth treatment. Type IIa



October 3, 2022
IGI Report No. LG547268265
OVAL ROSE CUT
Carat Weight 3.21 CARATS
Color Grade H
Clarity Grade VS 2
Depth 0%
Table 0%
Girdle Slightly Thick to Very Thick (Faceted)
Culet EXCELLENT
Polish EXCELLENT
Symmetry EXCELLENT
Fluorescence NONE
Inscription(s) LABGROWN IGI LG547268265
Comments: This Laboratory Grown Diamond was created by Chemical Vapor Deposition (CVD) growth process and may include post-growth treatment. Type IIa