



ELECTRONIC COPY

LABORATORY GROWN DIAMOND REPORT

September 29, 2022
IGI Report Number LG547268264
Description LABORATORY GROWN DIAMOND
Shape and Cutting Style ROUND ROSE CUT
Measurements 10.61 X 10.70 X 2.61 MM

GRADING RESULTS

Carat Weight 3.09 CARATS
Color Grade H
Clarity Grade VS 2

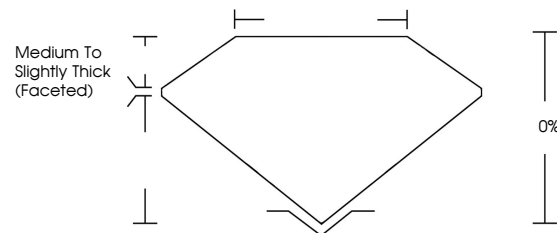
ADDITIONAL GRADING INFORMATION

Polish EXCELLENT
Symmetry VERY GOOD
Fluorescence NONE

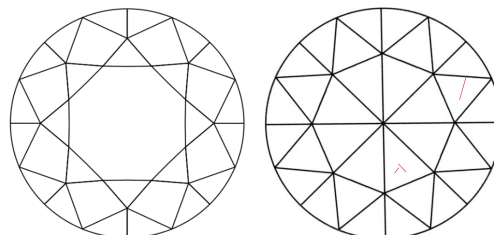
Inscription(s) LABGROWN IGI LG547268264
Comments: This Laboratory Grown Diamond was created by Chemical Vapor Deposition (CVD) growth process and may include post-growth treatment. Type IIa

LG547268264

PROPORTIONS



CLARITY CHARACTERISTICS

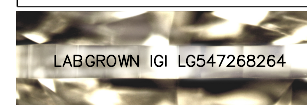
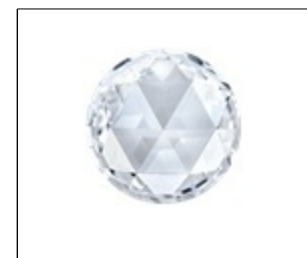


KEY TO SYMBOLS

Red symbols indicate internal characteristics.
Green symbols indicate external characteristics.

GRADING SCALES

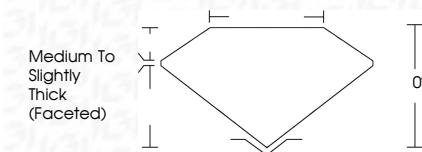
Table with 2 rows and 5 columns showing color grading scales (CL, NC, FT, VLT, LT) and clarity (10x) grading scales (FL, IF, VVS, VS, SI, I).



LASERSCRIBE SM

Sample Image Used

September 29, 2022
IGI Report Number LG547268264
Description LABORATORY GROWN DIAMOND
Shape and Cutting Style ROUND ROSE CUT
Measurements 10.61 X 10.70 X 2.61 MM
GRADING RESULTS
Carat Weight 3.09 CARATS
Color Grade H
Clarity Grade VS 2



ADDITIONAL GRADING INFORMATION

Polish EXCELLENT
Symmetry VERY GOOD
Fluorescence NONE

Inscription(s) LABGROWN IGI LG547268264

Comments: This Laboratory Grown Diamond was created by Chemical Vapor Deposition (CVD) growth process and may include post-growth treatment. Type IIa



IGI

September 29, 2022
IGI Report No LG547268264
ROUND ROSE CUT
Carat Weight 3.09 CARATS
Color Grade H
Clarity Grade VS 2
Depth 0%
Table 0%
Girdle Medium To Slightly Thick (Faceted)
Polish EXCELLENT
Symmetry VERY GOOD
Fluorescence NONE
Inscription(s) LABGROWN IGI LG547268264
Comments: This Laboratory Grown Diamond was created by Chemical Vapor Deposition (CVD) growth process and may include post-growth treatment. Type IIa