



ELECTRONIC COPY

LABORATORY GROWN DIAMOND REPORT

October 3, 2022
IGI Report Number LG547268248
Description LABORATORY GROWN DIAMOND
Shape and Cutting Style OVAL ROSE CUT
Measurements 9.31 X 6.99 X 2.34 MM

GRADING RESULTS

Carat Weight 1.63 CARAT
Color Grade H
Clarity Grade VS 1

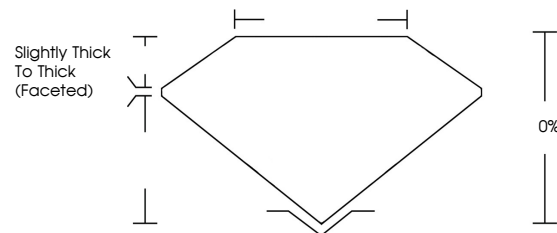
ADDITIONAL GRADING INFORMATION

Polish EXCELLENT
Symmetry EXCELLENT
Fluorescence NONE

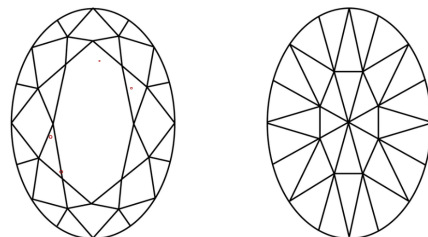
Inscription(s) LABGROWN (LGI) LG547268248
Comments: This Laboratory Grown Diamond was created by Chemical Vapor Deposition (CVD) growth process and may include post-growth treatment. Type IIa

LG547268248

PROPORTIONS



CLARITY CHARACTERISTICS

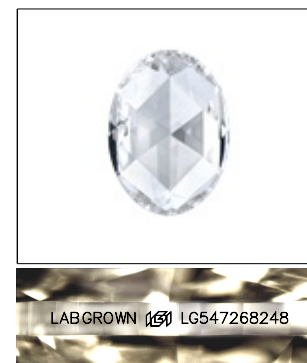


KEY TO SYMBOLS

Red symbols indicate internal characteristics.
Green symbols indicate external characteristics.

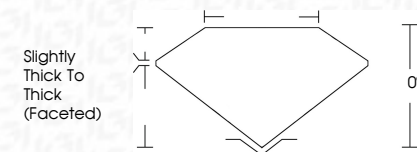
GRADING SCALES

Table with 2 rows: COLOR GRADING SCALE (CL, NC, FT, VLT, LT) and CLARITY (10x) GRADING SCALE (FL, IF, VVS, VS, SI, I).



LASERSCRIBE SM
Sample Image Used

October 3, 2022
IGI Report Number LG547268248
Description LABORATORY GROWN DIAMOND
Shape and Cutting Style OVAL ROSE CUT
Measurements 9.31 X 6.99 X 2.34 MM
GRADING RESULTS
Carat Weight 1.63 CARAT
Color Grade H
Clarity Grade VS 1



ADDITIONAL GRADING INFORMATION

Polish EXCELLENT
Symmetry EXCELLENT
Fluorescence NONE
Inscription(s) LABGROWN (LGI) LG547268248

Comments: This Laboratory Grown Diamond was created by Chemical Vapor Deposition (CVD) growth process and may include post-growth treatment. Type IIa



October 3, 2022
IGI Report No. LG547268248
OVAL ROSE CUT
Carat Weight 1.63 CARAT
Color Grade H
Clarity Grade VS 1
Depth 0%
Table 0%
Girdle Slightly Thick To Thick (Faceted)
Culet EXCELLENT
Symmetry EXCELLENT
Fluorescence NONE
Inscription(s) LABGROWN (LGI) LG547268248
Comments: This Laboratory Grown Diamond was created by Chemical Vapor Deposition (CVD) growth process and may include post-growth treatment. Type IIa