



ELECTRONIC COPY

LABORATORY GROWN DIAMOND REPORT

September 27, 2022
 IGI Report Number **LG547268241**
 Description **LABORATORY GROWN
DIAMOND**
 Shape and Cutting Style **ROUND ROSE CUT**
 Measurements **7.52 X 7.58 X 2.60 MM**

GRADING RESULTS

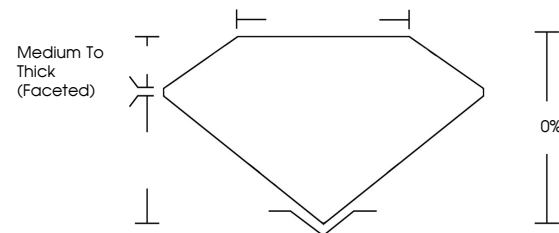
Carat Weight **1.57 CARAT**
 Color Grade **H**
 Clarity Grade **SI 1**

ADDITIONAL GRADING INFORMATION

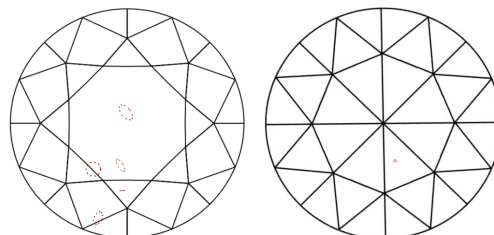
Polish **EXCELLENT**
 Symmetry **VERY GOOD**
 Fluorescence **NONE**
 Inscription(s) **LABGROWN IGI LG547268241**
 Comments: This Laboratory Grown Diamond was created by Chemical Vapor Deposition (CVD) growth process and may include post-growth treatment. Type IIa

LG547268241

PROPORTIONS



CLARITY CHARACTERISTICS



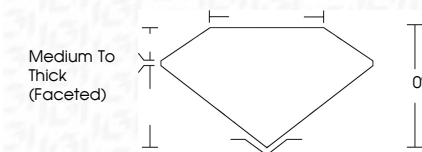
KEY TO SYMBOLS

Red symbols indicate internal characteristics.
 Green symbols indicate external characteristics.

GRADING SCALES

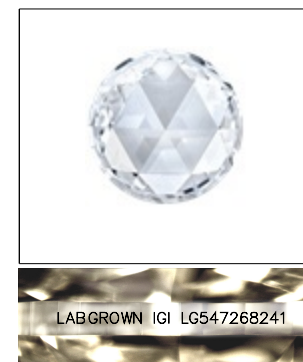
COLOR GRADING SCALE	CL	NC	FT	VLT	LT	
	COLORLESS D-F	NEAR COLORLESS G-J	FAINT K-M	VERY LIGHT N-R	LIGHT S-Z	
CLARITY (10x) GRADING SCALE	FL	IF	VVS	VS	SI	I
	FLAWLESS INTERNALLY FLAWLESS	VERY VERY SLIGHTLY INCLUDED	VERY SLIGHTLY INCLUDED	SLIGHTLY INCLUDED	INCLUDED	

September 27, 2022
 IGI Report Number **LG547268241**
 Description **LABORATORY GROWN
DIAMOND**
 Shape and Cutting Style **ROUND ROSE CUT**
 Measurements **7.52 X 7.58 X 2.60 MM**
GRADING RESULTS
 Carat Weight **1.57 CARAT**
 Color Grade **H**
 Clarity Grade **SI 1**



ADDITIONAL GRADING INFORMATION

Polish **EXCELLENT**
 Symmetry **VERY GOOD**
 Fluorescence **NONE**
 Inscription(s) **LABGROWN IGI LG547268241**
 Comments: This Laboratory Grown Diamond was created by Chemical Vapor Deposition (CVD) growth process and may include post-growth treatment. Type IIa



LASERSCRIBESM

Sample Image Used



IGI

September 27, 2022
 IGI Report No **LG547268241**
ROUND ROSE CUT
 Carat Weight **1.57 CARAT**
 Color Grade **H**
 Clarity Grade **SI 1**
 Depth **0%**
 Table **0%**
 Girdle **Medium To Thick (Faceted)**
 Polish **EXCELLENT**
 Symmetry **VERY GOOD**
 Fluorescence **NONE**
 Inscription(s) **LABGROWN IGI LG547268241**
 Comments:

This Laboratory Grown Diamond was created by Chemical Vapor Deposition (CVD) growth process and may include post-growth treatment. Type IIa