



ELECTRONIC COPY

LABORATORY GROWN DIAMOND REPORT

September 29, 2022
IGI Report Number LG547268224
Description LABORATORY GROWN DIAMOND
Shape and Cutting Style ROUND ROSE CUT
Measurements 8.81 X 8.90 X 2.78 MM

GRADING RESULTS

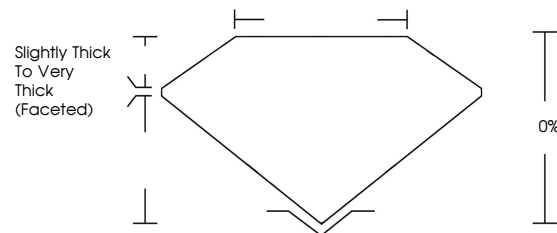
Carat Weight 2.33 CARATS
Color Grade H
Clarity Grade VS 2

ADDITIONAL GRADING INFORMATION

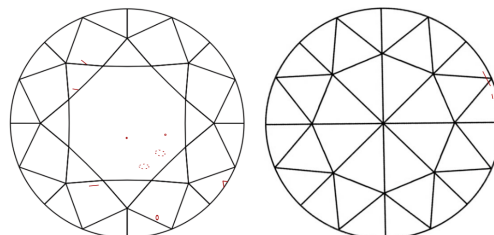
Polish EXCELLENT
Symmetry VERY GOOD
Fluorescence NONE
Inscription(s) LABGROWN IGI LG547268224
Comments: This Laboratory Grown Diamond was created by Chemical Vapor Deposition (CVD) growth process and may include post-growth treatment. Type IIa

LG547268224

PROPORTIONS



CLARITY CHARACTERISTICS

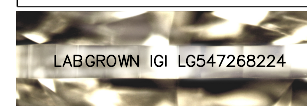
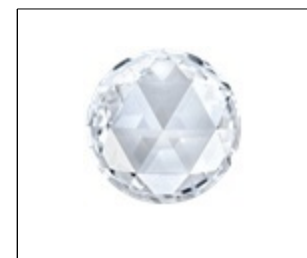


KEY TO SYMBOLS

Red symbols indicate internal characteristics.
Green symbols indicate external characteristics.

GRADING SCALES

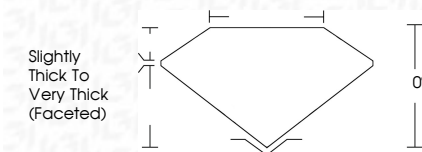
Table with 2 rows: COLOR GRADING SCALE (CL, NC, FT, VLT, LT) and CLARITY (10x) GRADING SCALE (FL, IF, VVS, VS, SI, I).



LASERSCRIBE SM

Sample Image Used

September 29, 2022
IGI Report Number LG547268224
Description LABORATORY GROWN DIAMOND
Shape and Cutting Style ROUND ROSE CUT
Measurements 8.81 X 8.90 X 2.78 MM
GRADING RESULTS
Carat Weight 2.33 CARATS
Color Grade H
Clarity Grade VS 2



ADDITIONAL GRADING INFORMATION

Polish EXCELLENT
Symmetry VERY GOOD
Fluorescence NONE
Inscription(s) LABGROWN IGI LG547268224
Comments: This Laboratory Grown Diamond was created by Chemical Vapor Deposition (CVD) growth process and may include post-growth treatment. Type IIa



IGI



Summary table of report details: September 29, 2022, IGI Report No LG547268224, ROUND ROSE CUT, 8.81 X 8.90 X 2.78 MM, Carat Weight 2.33 CARATS, Color Grade H, Clarity Grade VS 2, Depth 0%, Table 0%, Girdle Slightly Thick to Very Thick (Faceted), Polish EXCELLENT, Symmetry VERY GOOD, Fluorescence NONE, Inscription(s) LABGROWN IGI LG547268224, Comments: This Laboratory Grown Diamond was created by Chemical Vapor Deposition (CVD) growth process and may include post-growth treatment. Type IIa