



ELECTRONIC COPY

LABORATORY GROWN DIAMOND REPORT

September 29, 2022
 IGI Report Number **LG547268216**
 Description **LABORATORY GROWN
DIAMOND**
 Shape and Cutting Style **ROUND ROSE CUT**
 Measurements **6.78 X 6.89 X 1.98 MM**

GRADING RESULTS

Carat Weight **1.03 CARAT**
 Color Grade **H**
 Clarity Grade **VS 1**

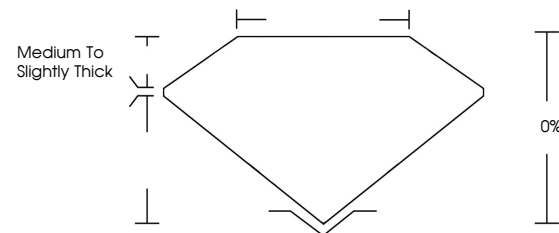
ADDITIONAL GRADING INFORMATION

Polish **EXCELLENT**
 Symmetry **EXCELLENT**
 Fluorescence **NONE**

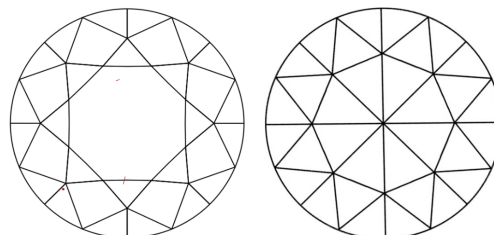
Inscription(s) **LABGROWN IGI LG547268216**
 Comments: This Laboratory Grown Diamond was created by Chemical Vapor Deposition (CVD) growth process and may include post-growth treatment. Type IIa

LG547268216

PROPORTIONS



CLARITY CHARACTERISTICS



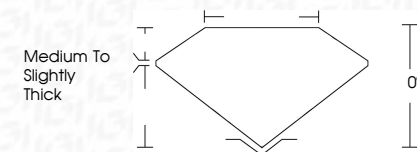
KEY TO SYMBOLS

Red symbols indicate internal characteristics.
 Green symbols indicate external characteristics.

GRADING SCALES

COLOR GRADING SCALE	CL	NC	FT	VLT	LT	
	COLORLESS D-F	NEAR COLORLESS G-J	FAINT K-M	VERY LIGHT N-R	LIGHT S-Z	
CLARITY (10x) GRADING SCALE	FL	IF	VVS	VS	SI	I
	FLAWLESS INTERNALLY FLAWLESS	VERY VERY SLIGHTLY INCLUDED	VERY SLIGHTLY INCLUDED	SLIGHTLY INCLUDED	INCLUDED	

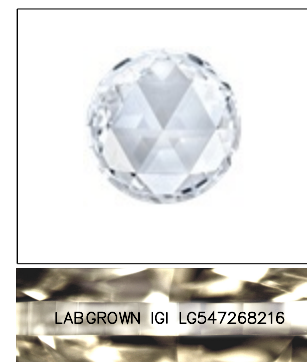
September 29, 2022
 IGI Report Number **LG547268216**
 Description **LABORATORY GROWN
DIAMOND**
 Shape and Cutting Style **ROUND ROSE CUT**
 Measurements **6.78 X 6.89 X 1.98 MM**
GRADING RESULTS
 Carat Weight **1.03 CARAT**
 Color Grade **H**
 Clarity Grade **VS 1**



ADDITIONAL GRADING INFORMATION

Polish **EXCELLENT**
 Symmetry **EXCELLENT**
 Fluorescence **NONE**
 Inscription(s) **LABGROWN IGI LG547268216**

Comments: This Laboratory Grown Diamond was created by Chemical Vapor Deposition (CVD) growth process and may include post-growth treatment. Type IIa



LASERSCRIBESM

Sample Image Used



IGI

September 29, 2022
 IGI Report No LG547268216
ROUND ROSE CUT
 Carat Weight **1.03 CARAT**
 Color Grade **H**
 Clarity Grade **VS 1**
 Depth **0%**
 Table **0%**
 Girdle **Medium to Slightly Thick**
 Polish **EXCELLENT**
 Symmetry **EXCELLENT**
 Fluorescence **NONE**
 Inscription(s) **LABGROWN IGI LG547268216**
 Comments: **This Laboratory Grown Diamond was created by Chemical Vapor Deposition (CVD) growth process and may include post-growth treatment. Type IIa**