



ELECTRONIC COPY

LABORATORY GROWN DIAMOND REPORT

Description	LABORATORY GROWN DIAMOND
Shape and Cutting Style	EMERALD CUT
Measurements	6.62 X 4.83 X 3.25 MM

GRADING RESULTS

Carat Weight	1.03 CARAT
Color Grade	H
Clarity Grade	VS 2

ADDITIONAL GRADING INFORMATION

Polish	EXCELLENT
Symmetry	EXCELLENT
Fluorescence	NONE

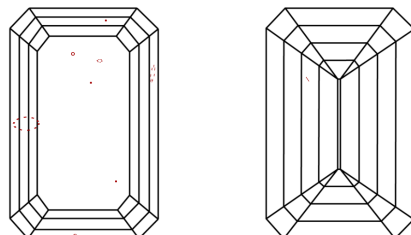
Inscription(s) **LABGROWN IGI LG547267139**
 Comments: This Laboratory Grown Diamond was created by Chemical Vapor Deposition (CVD) growth process and may include post-growth treatment.
 Type IIa

PROPORTIONS

Diagram illustrating proportions for a diamond shape:

- Top horizontal edge: 72.5%
- Left vertical edge: 12% (top), 52% (bottom)
- Right vertical edge: 67.3%
- Bottom horizontal edge: Long

CLARITY CHARACTERISTICS

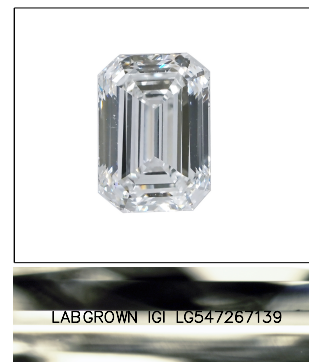


KEY TO SYMBOLS

Red symbols indicate internal characteristics.
Green symbols indicate external characteristics.

GRADING SCALES

COLOR GRADING SCALE	CL		NC		FT		VLT		LT	
	COLORLESS D-F		NEAR COLORLESS G-J		FAINT K-M		VERY LIGHT N-R		LIGHT S-Z	
CLARITY (10x) GRADING SCALE	FL IF		VVS		VS		SI		I	
	FLAWLESS INTERNALLY FLAWLESS		VERY VERY SLIGHTLY INCLUDED		VERY SLIGHTLY INCLUDED		SLIGHTLY INCLUDED		INCLUDED	

LASERSCRIBESM

Sample Image Used

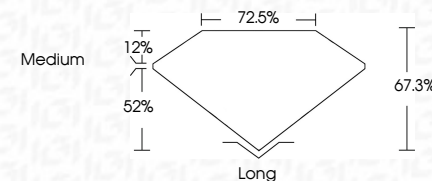


© IGI 2020, International Gemological Institute

FD - 10 20

LABORATORY GROWN DIAMOND REPORT

September 23, 2022	
IGI Report Number	LG547267139
Description	LABORATORY GROWN DIAMOND
Shape and Cutting Style	EMERALD CUT
Measurements	6.62 X 4.83 X 3.25 MM
GRADING RESULTS	
Carat Weight	1.03 CARAT
Color Grade	H
Clarity Grade	VS 2



ADDITIONAL GRADING INFORMATION

Polish	EXCELLENT
Symmetry	EXCELLENT
Fluorescence	NONE
Inscription(s)	LABGROWN IGI LG547267139

Inscription(s) LABGROWN IGI LG547267139

Comments: This Laboratory Grown Diamond was created by Chemical Vapor Deposition (CVD) growth process and may include post-growth treatment.
Type IIa



September 28, 2022	Report No. LG547267139	1.08 CARAT	Long
EMERALD CUT		H	EXCELLENT
6.62 X 4.83 X 3.25 MM		VS 2	EXCELLENT
		67.5%	NONE
		72.5%	LAGROWIN LG1
		Medium	LG547267139
			Comments:
			This Laboratory Grown Diamond was
			grown using a High Pressure High Temperature
			(HPHT) growth process and may include
			post-growth treatment.
			Type IIA

This Laboratory Grown Diamond was created by Chemical Vapor Deposition (CVD) growth process and may include post-growth treatment.