



ELECTRONIC COPY

LABORATORY GROWN DIAMOND REPORT

September 22, 2022	
IGI Report Number	LG547266785
Description	LABORATORY GROWN DIAMOND
Shape and Cutting Style	CUT CORNERED RECTANGULAR MODIFIED BRILLIANT
Measurements	8.50 X 5.83 X 4.04 MM

GRADING RESULTS

Carat Weight	1.71 CARAT
Color Grade	F
Clarity Grade	VS 1

ADDITIONAL GRADING INFORMATION

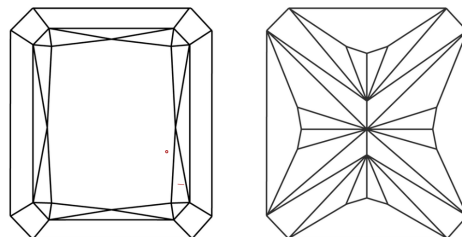
Polish	EXCELLENT
Symmetry	EXCELLENT
Fluorescence	NONE

Inscription(s) **LABGROWN IGI LG547266785**
 Comments: This Laboratory Grown Diamond was created by Chemical Vapor Deposition (CVD) growth process and may include post-growth treatment. Type IIa

Diagram illustrating the proportions of a diamond-shaped cross-section (likely a stylized nose or face shape). The proportions are defined by percentages and descriptive labels:

- Width:** 61.5%
- Height:** 69.3%
- Top Thickness:** 15%
- Bottom Thickness:** 51%
- Labels:** Thin To Medium (on the left), Pointed (at the bottom)

CLARITY CHARACTERISTICS

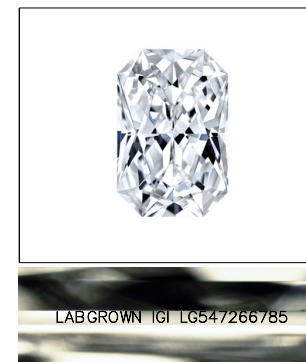


KEY TO SYMBOLS

Red symbols indicate internal characteristics.
Green symbols indicate external characteristics.

GRADING SCALES

COLOR GRADING SCALE	CL		NC		FT		VLT		LT	
	COLORLESS D-F		NEAR COLORLESS G-J		FAINT K-M		VERY LIGHT N-R		LIGHT S-Z	
CLARITY (10x) GRADING SCALE	FL	IF	VVS		VS		SI		I	
	FLAWLESS INTERNALLY FLAWLESS		VERY VERY SLIGHTLY INCLUDED		VERY SLIGHTLY INCLUDED		SLIGHTLY INCLUDED		INCLUDED	

LASERSCRIBESM

Sample Image Used



© IGI 2020, International Gemological Institute

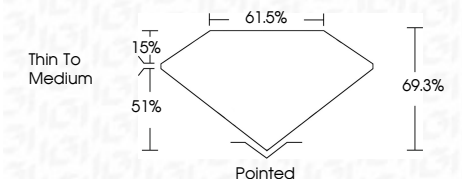
FD - 10 20

THIS DOCUMENT WAS PRODUCED WITH THE FOLLOWING SECURITY MEASURES: SPECIAL DOCUMENT PAPER, INK SCREENS, WATERMARK, BACKGROUND DESIGNS, HOLOGRAM AND OTHER SECURITY FEATURES NOT LISTED AND DO EXCEED DOCUMENT SECURITY INDUSTRY GUIDELINES

LABORATORY GROWN DIAMOND REPORT

September 22, 2022	
IGI Report Number	LG547266785
Description	LABORATORY GROWN DIAMOND
Shape and Cutting Style	CUT CORNERED RECTANGULAR MODIFIED BRILLIANT
Measurements	8.50 X 5.83 X 4.04 MM

Carat Weight	1.71 CARAT
Color Grade	F
Clarity Grade	VS 1



ADDITIONAL GRADING INFORMATION

Polish	EXCELLENT
Symmetry	EXCELLENT
Fluorescence	NONE
Inscription(s)	LABGROWN IGI LG547266785

Comments: This Laboratory Grown Diamond was created by Chemical Vapor Deposition (CVD) growth process and may include post-growth treatment.
Type IIa



IGI

September 22, 2022	GI Report No. LG50726785	1.71 CARAT	VS 1	Pointed	This Laboratory Grown Diamond was produced using a High Pressure High Temperature (HPHT) growth process and may include post-growth treatment. Type IIA
	2.01 Carat Certified Rec. MODIFIED		69.3%	EXCELLENT	
	3.50 X 3.50 X 4.04 MM		61.5%	EXCELLENT	
	Carat Weight	Thin To Medium		NONE	
	Color Grade			LAB-GROWN (SI LG50726785)	
	Clarity Grade				Comments:
	Depth			Symmetry	
	Table			Fluorescence	
	Grade			Inscriptions (SI)	
	Culet				
	Polish				