



**ELECTRONIC COPY**

## LABORATORY GROWN DIAMOND REPORT

October 25, 2022	
IGI Report Number	LG547250542
Description	LABORATORY GROWN DIAMOND
Shape and Cutting Style	ROUND BRILLIANT
Measurements	7.34 - 7.36 X 4.53 MM

## GRADING RESULTS

Carat Weight	1.51 CARAT
Color Grade	H
Clarity Grade	SI 1
Cut Grade	IDEAL

### ADDITIONAL GRADING INFORMATION

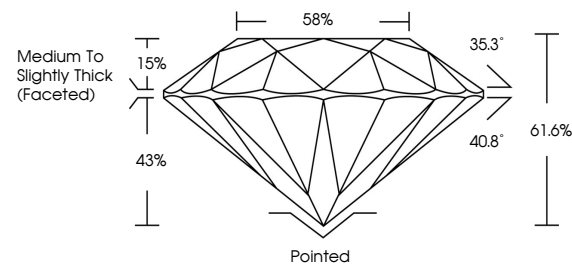
Polish	EXCELLENT
Symmetry	EXCELLENT
Fluorescence	NONE

Inscription(s) LABGROWN  LG547250542

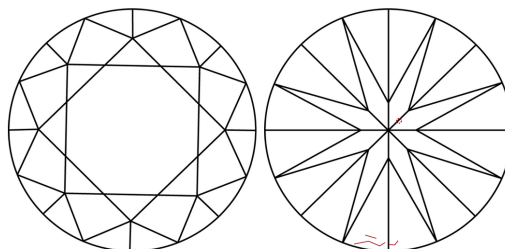
Comments: This Laboratory Grown Diamond was created by Chemical Vapor Deposition (CVD) growth process and may include post-growth treatment.  
Type IIa

LG547250542

## PROPORTIONS



## CLARITY CHARACTERISTICS

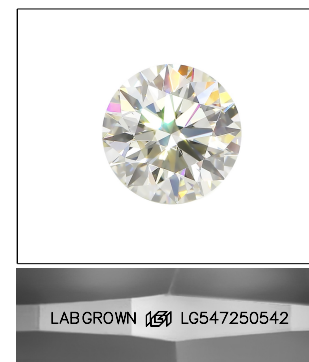


### KEY TO SYMBOLS

Red symbols indicate internal characteristics.  
Green symbols indicate external characteristics.

## GRADING SCALES

COLOR GRADING SCALE	CL		NC	FT	VLT	LT
	COLORLESS D-F		NEAR COLORLESS G-J	FAINT K-M	VERY LIGHT N-R	LIGHT S-Z
CLARITY (10x) GRADING SCALE	FL	IF	VVS	VS	SI	I
	FLAWLESS INTERNALLY FLAWLESS		VERY VERY SLIGHTLY INCLUDED	VERY SLIGHTLY INCLUDED	SLIGHTLY INCLUDED	INCLUDED

LASERSCRIBE<sup>SM</sup>

Sample Image Used



© IGI 2020, International Gemological Institute

FD - 10 20

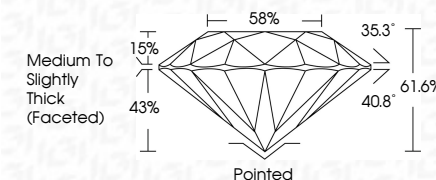
## LABORATORY GROWN DIAMOND REPORT

October 25, 2022	
IGI Report Number	LG547250542
Description	LABORATORY GROWN

Shape and Cutting Style	ROUND BRILLIANT
Measurements	7.34 - 7.36 X 4.53 MM

## GRADING RESULTS

Carat Weight	1.51 CARAT
Color Grade	H
Clarity Grade	SI 1
Cut Grade	IDEAL



### ADDITIONAL GRADING INFORMATION

Polish	EXCELLENT
Symmetry	EXCELLENT
Fluorescence	NONE
Inscription(s)	LABGROWN (16) LG547250542

Comments: This Laboratory Grown Diamond was created by Chemical Vapor Deposition (CVD) growth process and may include post-growth treatment.  
Type IIa



October 25, 2022	Color Grade	1.51 CARAT	H
G/Report No. LG547295042	Cut/Clarity Grade	S I 1	IDEAL
ROUND BRILLIANT	Cut/Clarity Grade	61.5%	61.5%
7.34 - 7.35 X 4.53 MM	Depth	58%	58%
	Table	Medium To Slightly Thick (rounded)	
	Grade	Polished	EXCELLENT
	Culet	Symmetry	EXCELLENT
	Polish	Fluorescence	NONE
		Thermal (phi)3	LASEROWN (68)
			LG547295042
	Comments:	This Laboratory Group Diamond was used for the purpose of the COVID-19 growth process and may include post-growth treatment.	
		Type Iia	