



**ELECTRONIC COPY**

## LABORATORY GROWN DIAMOND REPORT

|                         |  |
|-------------------------|--|
| September 17, 2022      |  |
| IGI Report Number       | LG547248109                                    |
| Description             | LABORATORY GROWN<br>DIAMOND                    |
| Shape and Cutting Style | CUT CORNERED RECTANGULAR<br>MODIFIED BRILLIANT |
| Measurements            | 7.75 X 5.44 X 3.80 MM                          |

## GRADING RESULTS

|               |            |
|---------------|------------|
| Carat Weight  | 1.37 CARAT |
| Color Grade   | F          |
| Clarity Grade | SI 1       |

### ADDITIONAL GRADING INFORMATION

|              |           |
|--------------|-----------|
| Polish       | EXCELLENT |
| Symmetry     | EXCELLENT |
| Fluorescence | NONE      |

Inscription(s) **LABGROWN IGI LG547248109**  
 Comments: This Laboratory Grown Diamond was created by Chemical Vapor Deposition (CVD) growth process and may include post-growth treatment. Type IIa

**PROPORTIONS**

Medium To Slightly Thick

13%

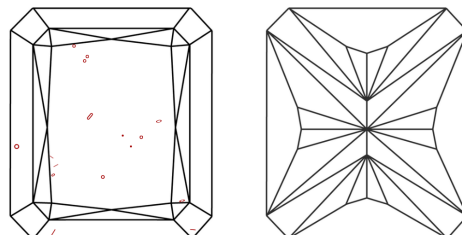
67.5%

69.9%

52%

Pointed

## CLARITY CHARACTERISTICS

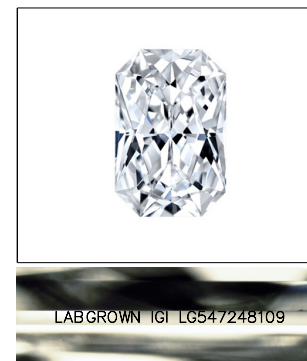


## KEY TO SYMBOLS

Red symbols indicate internal characteristics.  
Green symbols indicate external characteristics.

## GRADING SCALES

|                             |                              |    |                             |                        |                   |           |
|-----------------------------|------------------------------|----|-----------------------------|------------------------|-------------------|-----------|
| COLOR GRADING SCALE         | CL                           |    | NC                          | FT                     | VLT               | LT        |
|                             | COLORLESS D-F                |    | NEAR COLORLESS G-J          | FAINT K-M              | VERY LIGHT N-R    | LIGHT S-Z |
| CLARITY (10x) GRADING SCALE | FL                           | IF | VVS                         | VS                     | SI                | I         |
|                             | FLAWLESS INTERNALLY FLAWLESS |    | VERY VERY SLIGHTLY INCLUDED | VERY SLIGHTLY INCLUDED | SLIGHTLY INCLUDED | INCLUDED  |

LASERSCRIBE<sup>SM</sup>

Sample Image Used



© IGI 2020, International Gemological Institute

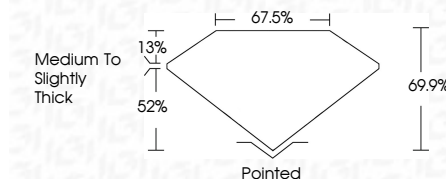
FD - 10 20

**www.igi.org**

## LABORATORY GROWN DIAMOND REPORT

|                         |   |
|-------------------------|---|
| September 17, 2022      |   |
| IGI Report Number       | LG547248109                                       |
| Description             | LABORATORY GROWN<br>DIAMOND                       |
| Shape and Cutting Style | CUT CORNERED<br>RECTANGULAR MODIFIED<br>BRILLIANT |
| Measurements            | 7.75 X 5.44 X 3.80 MM                             |

|               |            |
|---------------|------------|
| Carat Weight  | 1.37 CARAT |
| Color Grade   | F          |
| Clarity Grade | SI 1       |



### ADDITIONAL GRADING INFORMATION

|                |                          |
|----------------|--------------------------|
| Polish         | EXCELLENT                |
| Symmetry       | EXCELLENT                |
| Fluorescence   | NONE                     |
| Inscription(s) | LABGROWN IGI LG547248109 |

Inscription(s) LABGROWN IGI LG547248109

Comments: This Laboratory Grown Diamond was created by Chemical Vapor Deposition (CVD) growth process and may include post-growth treatment.  
Type IIa



|                            |                          |               |   |
|----------------------------|--------------------------|---------------|---|
| September 17, 2022         | SI 1                     | Pointed       | Comments:   |
| GI Report No. LG567248 109 | 66.9%                    | EXCELLENT     |   |
| CU COVERED BEC. MODIFIED   | 67.5%                    | EXCELLENT     |   |
| 7.5 x 5.4 x 3.80 MM        | Medium to Slightly Thick | NONE          |   |
| Carat Weight               | 1.37 CARAT               | LABGROWN (cl) | This Laboratory Grown Diamond was<br>certified by the Gemological Institute<br>of America (GIA) as a Type IIa<br>(CVD) growth process and may include<br>post-growth treatment. |
| Color Grade                | F                        | LG567248 109  |   |
| Clarity Grade              |                          |               |   |
| Depth                      |                          |               |   |
| Table                      |                          |               |   |
| Girdle                     |                          |               |   |
| Culet                      |                          |               |   |
| Polish                     |                          |               |   |
| Symmetry                   |                          |               |   |
| Fluorescence               |                          |               |   |
| Inscription(s)             |                          |               |   |