



ELECTRONIC COPY

LABORATORY GROWN DIAMOND REPORT

September 13, 2022	
IGI Report Number	LG546231050
Description	LABORATORY GROWN DIAMOND
Shape and Cutting Style	CUT CORNERED RECTANGULAR MODIFIED BRILLIANT
Measurements	8.37 X 5.99 X 3.92 MM

GRADING RESULTS

Carat Weight	1.71 CARAT
Color Grade	G
Clarity Grade	VS 1

ADDITIONAL GRADING INFORMATION

Polish	EXCELLENT
Symmetry	EXCELLENT
Fluorescence	NONE

Inscription(s) **LABGROWN IGI LG546231050**
 Comments: This Laboratory Grown Diamond was created by Chemical Vapor Deposition (CVD) growth process and may include post-growth treatment. Type IIa

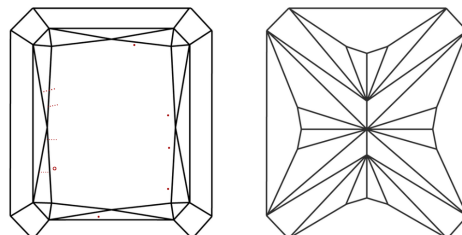
LG546231050

PROPORTIONS

Diagram illustrating the proportions of a diamond-shaped tile:

- Top width: 66.5%
- Left side height (from top edge to bottom edge): 65.4%
- Left side height (from top edge to bottom edge): 47.5%
- Left side height (from top edge to bottom edge): 12.5%
- Bottom edge: Pointed
- Left side edge: Slightly Thick

CLARITY CHARACTERISTICS

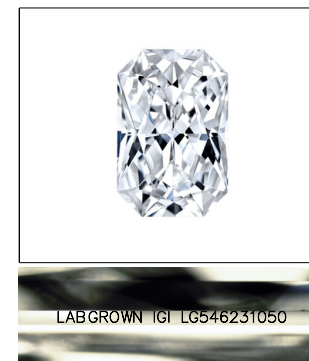


KEY TO SYMBOLS

Red symbols indicate internal characteristics.
Green symbols indicate external characteristics.

GRADING SCALES

COLOR GRADING SCALE	CL		NC		FT		VLT		LT	
	COLORLESS D-F		NEAR COLORLESS G-J		FAINT K-M		VERY LIGHT N-R		LIGHT S-Z	
CLARITY (10x) GRADING SCALE	FL	IF	VVS		VS		SI		I	
	FLAWLESS INTERNALLY FLAWLESS		VERY VERY SLIGHTLY INCLUDED		VERY SLIGHTLY INCLUDED		SLIGHTLY INCLUDED		INCLUDED	

LASERSCRIBESM

Sample Image Used



© IGI 2020, International Gemological Institute

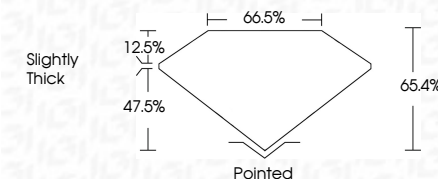
FD - 10 20

LABORATORY GROWN DIAMOND REPORT

September 13, 2022	
IGI Report Number	LG546231050
Description	LABORATORY GROWN DIAMOND
Shape and Cutting Style	CUT CORNERED RECTANGULAR MODIFIED BRILLIANT
Measurements	8.37 X 5.99 X 3.92 MM

GRADING RESULTS

Carat Weight	1.71 CARAT
Color Grade	G
Clarity Grade	VS 1



ADDITIONAL GRADING INFORMATION

Polish	EXCELLENT
Symmetry	EXCELLENT
Fluorescence	NONE
Inscription(s)	LABGROWN IGI LG546231050

Comments: This Laboratory Grown Diamond was created by Chemical Vapor Deposition (CVD) growth process and may include post-growth treatment.
Type IIa



Sale Date	September 13, 2022
GLP Approved By	GJ PERROWE No. LGS64931080
GLP Permitted Recd.	MODIFIED
Lot #	L37 X 379 X 3.92 MM
Carat Weight	1.71 CARAT
Color Grade	G
Cutty Grade	VS 1
Depth	65.4%
Table	65.4%
Girdle	Slightly Thick
Culet	Poished
Polish	Excellent
Symmetry	Excellent
Fluorescence	NONE
Inscriptions(s)	LABORATORY GROWN LGS64931080
Comments:	The Laboratory Grown Diamond was created by Chemical Vapor Deposition (CVD) growth process and may include post-growth treatment. Type IIC