



ELECTRONIC COPY

LABORATORY GROWN DIAMOND REPORT

September 13, 2022
 IGI Report Number **LG546230510**
 Description **LABORATORY GROWN
DIAMOND**
 Shape and Cutting Style **PRINCESS CUT**
 Measurements **8.30 X 8.09 X 6.24 MM**

GRADING RESULTS

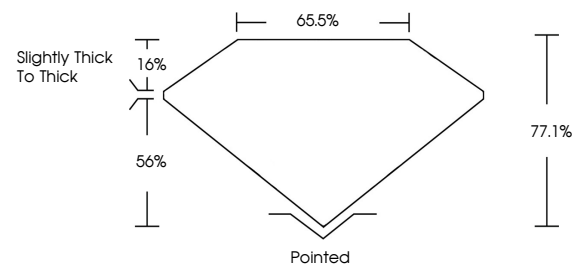
Carat Weight **3.70 CARATS**
 Color Grade **G**
 Clarity Grade **VS 1**

ADDITIONAL GRADING INFORMATION

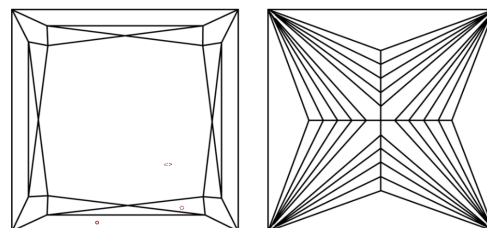
Polish **EXCELLENT**
 Symmetry **EXCELLENT**
 Fluorescence **NONE**
 Inscription(s) **LABGROWN IGI LG546230510**
 Comments: This Laboratory Grown Diamond was created by Chemical Vapor Deposition (CVD) growth process and may include post-growth treatment. Type IIa

LG546230510

PROPORTIONS



CLARITY CHARACTERISTICS



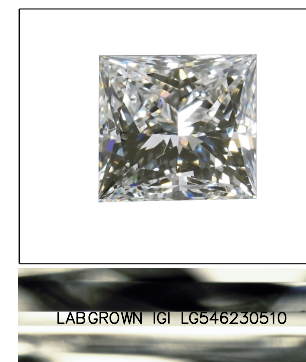
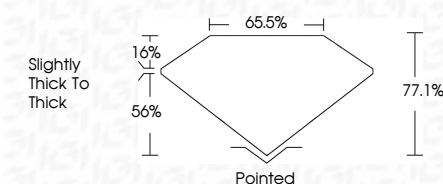
KEY TO SYMBOLS

Red symbols indicate internal characteristics.
 Green symbols indicate external characteristics.

GRADING SCALES

| | | | | | | |
|-----------------------------|------------------------------|-----------------------------|------------------------|-------------------|-----------|---|
| COLOR GRADING SCALE | CL | NC | FT | VLT | LT | |
| | COLORLESS D-F | NEAR COLORLESS G-J | FAINT K-M | VERY LIGHT N-R | LIGHT S-Z | |
| CLARITY (10x) GRADING SCALE | FL | IF | VVS | VS | SI | I |
| | FLAWLESS INTERNALLY FLAWLESS | VERY VERY SLIGHTLY INCLUDED | VERY SLIGHTLY INCLUDED | SLIGHTLY INCLUDED | INCLUDED | |

September 13, 2022
 IGI Report Number **LG546230510**
 Description **LABORATORY GROWN
DIAMOND**
 Shape and Cutting Style **PRINCESS CUT**
 Measurements **8.30 X 8.09 X 6.24 MM**
GRADING RESULTS
 Carat Weight **3.70 CARATS**
 Color Grade **G**
 Clarity Grade **VS 1**



LASERSCRIBESM

Sample Image Used

ADDITIONAL GRADING INFORMATION

Polish **EXCELLENT**
 Symmetry **EXCELLENT**
 Fluorescence **NONE**
 Inscription(s) **LABGROWN IGI LG546230510**
 Comments: This Laboratory Grown Diamond was created by Chemical Vapor Deposition (CVD) growth process and may include post-growth treatment. Type IIa



IGI



| | | | | |
|---------------------|-----------------------------------|---------------------------------|--------------------------------------|--|
| September 13, 2022 | IGI Report No. LG546230510 | Carat Weight 3.70 CARATS | Color Grade G | Culet Pointed |
| PRINCESS CUT | 8.30 X 8.09 X 6.24 MM | Clarity Grade VS 1 | Depth 77.1% | Polish EXCELLENT |
| | | Table 65.6% | Grade Slightly thick to thick | Symmetry EXCELLENT |
| | | | | Fluorescence NONE |
| | | | | Inscription(s) LABGROWN IGI LG546230510 |
| | | | | Comments: This Laboratory Grown Diamond was created by Chemical Vapor Deposition (CVD) growth process and may include post-growth treatment. Type IIa |